



SALT LAKE COMMUNITY COLLEGE

WHAT IS INSIDE

- 4 Become a Bruin
- 6 Degree & Course Options
- 8 Areas of Study
- 12 Hands-on Learning
- 14 Workforce Training & Education
- 16 Campus Locations
- 18 Experience Your Learning
- 20 Athletics
- 22 Student Success
- 26 Get Involved
- 28 Express Yourself
- 30 Student Resources
- 32 Paying for College
- 34 Quick Facts

MISSION

Salt Lake Community College is your community college. We engage and support students in educational pathways leading to successful transfer and meaningful employment.

VISION

SLCC will be a model for inclusive and transformative education, strengthening the communities we serve through the success of our students.





BECOME A BRUIN

ADMISSIONS

Fill out the application online and you are on your way to enrolling at SLCC!

- slcc.edu/apply
- slcc.edu/apliqueahora
- slcc.edu/admissions



PLACEMENT PROCESS

Complete the SLCC placement process before registering for the appropriate courses for your major.

- slcc.edu/testing

NEW STUDENT ORIENTATION

Attend an orientation through the Orientation and Student Success office.

- slcc.edu/oss/orientation
- 📍 [oss_slcc](#)



COURSE REGISTRATION

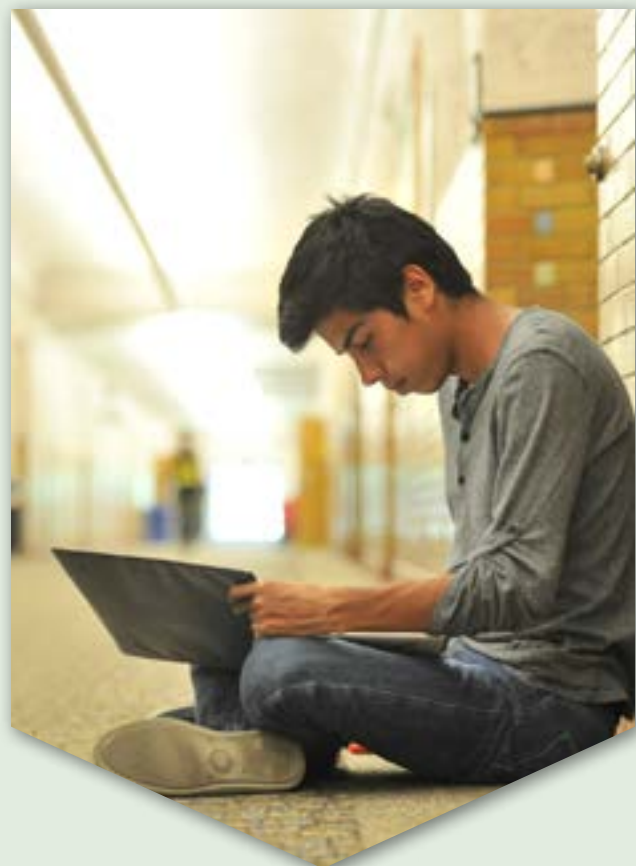
Once you have completed the steps above, you are ready to meet with an academic advisor and register for courses.

- slcc.edu/academicadvising

VISIT CAMPUS

Take a tour of one of our campuses or attend one of our on-campus events.

slcc.edu/admissions/tours.aspx



TRANSFER & AP CREDIT

If you have taken courses at another institution, submit an official transcript when you apply to SLCC. Your classes will be evaluated so you receive the credit you have earned.

High school students who have AP test scores will send an official copy of the scores from the testing company. Former and concurrent enrollment students returning to SLCC will need to complete the Admissions Update form in MySLCC.

slcc.edu/transcriptevaluation

DEGREE & COURSE OPTIONS

DEGREE OPTIONS

ASSOCIATE OF SCIENCE (AS)

If you would like to complete your general education and prerequisite courses prior to transferring to a bachelor's degree program at a Utah public four-year college or university, this path is for you. This is a great option for students who want to structure their major for a specific area of study.

ASSOCIATE OF ARTS (AA)

This degree choice is much like the AS degree with the addition of a foreign language requirement.

ASSOCIATE OF PRE-ENGINEERING (APE)

This is a specialized program to prepare you for transferring seamlessly into an engineering program at a Utah public four-year college or university. You will be required to complete a significant amount of engineering coursework, while taking fewer general education courses.

ASSOCIATE OF APPLIED SCIENCE (AAS)

If you're interested in a fast track toward an entry-level career, this choice is right for you. AAS degrees require more major-specific courses with fewer general education requirements.

CERTIFICATE OF COMPLETION (CC)

This path will help you focus on a specialized field of study that quickly matches students to good-paying jobs that are in high demand in Utah.

CERTIFICATE OF PROFICIENCY (CP)

If you are already working in the field of your choice and you want an education to refine or improve your skills for a raise or promotion, this alternative may be right for you.

CERTIFICATE OF ACHIEVEMENT (CA)

If you want to jump-start your career and get prepared for an entry-level job, you should investigate your options with this track.



COURSE TYPES



LECTURE

Lectures take place in person, on campus, at a specific time and place. Some material may be provided in Canvas; most is delivered face to face. You may be asked to attend some classes virtually on an as needed basis during the semester.



ONLINE

Online course instruction happens in Canvas, your “virtual classroom,” accessible anytime, anywhere. All interactions with your classmates and professor will happen online. Reliable internet is key. Some exams take place in a testing center.



LIVESTREAM LECTURE

Livestream lectures are different from online courses; you must “attend” class virtually at a specified time through a web conferencing tool like Zoom or Microsoft Teams. Most, if not all, assignments will be completed in Canvas.



HYBRID

The best of both worlds, hybrid courses combine in-classroom lectures with the flexibility of online learning. You will complete some course activities in Canvas and some in a classroom. The time division can vary from course to course.

ADDITIONAL COLLEGE CREDIT OPTIONS

CONCURRENT ENROLLMENT

Concurrent Enrollment provides a challenging and rigorous college-level experience to high school students. Students in the program are awarded both college and high school credit.

slcc.edu/concurrentenrollment

COMPETENCY-BASED EDUCATION (CBE)

The CBE model can give you college credit for life and work experience in areas like healthcare, technical support, truck driving, website design, and electronics and engine repair.

slcc.edu/cbe

CREDIT FOR PRIOR LEARNING (CPL)

Salt Lake Community College is committed to the recognition of student learning that occurs outside of a formal classroom environment. In alignment with our current program offerings, each year CPL saves thousands of students time and money through assessments such as AP, CLEP, military training, language proficiency and more. Discover all CPL opportunities currently accepted at SLCC at:

faculty.slcc.edu/provost/curriculum/cpl.aspx

801-957-4073

AREAS OF STUDY

slcc.edu/catalog



ARTS, COMMUNICATION & DIGITAL MEDIA (ACDM)

Architecture.....	AS	Photography Foundations	CP
Communication Studies	AS	Technical Theatre	CP
Fashion Design & Merchandising:		Theatre Arts.....	AS
Fashion Design	AAS	Theatre Performance	CP
Fashion Merchandising	AAS	Video/Radio Production	AAS
Technical Apparel.....	AAS	Visual Art and Design:	
Film Production Technician.....	AAS	Animation	AS
Game Design & Development.....	CP	Animation Emphasis	AAS
Graphic Communications.....	AS, CC	Graphic Design Emphasis.....	AAS
Graphic Technician ●●.....	CP	Illustration Emphasis	AAS
Interior Design	AAS, CP	Multimedia Emphasis	AAS
Journalism & Digital Media	AS	Photography Emphasis.....	AAS
Media Music	AAS	Web Design Emphasis.....	AAS
MIDI	CP	Web Graphic Design.....	CP
Motion Graphics & Visual Effects.....	CP	Web Programmer ●●.....	CP
Music	AS	Web Site Designer ●●.....	CP
Music Recording Technology.....	AAS, CP	Interdisciplinary Studies ●.....	AA, AS



BUSINESS (BS)

Accounting	AAS, CC
Bookkeeping Clerk ●●	CA
Business	AA, AS
Business Administration	AAS
Business Management	AAS
Commercial Baking ●●	CC
Commercial Foods Certificate ●●	CC
Culinary Arts	AAS
Facebook Digital Marketing	CP
Financial Services	AAS
Hospitality Management	AS
Marketing Management	AAS
Paralegal Studies	AAS
Professional Sales	CP
Retail Management	CC
Interdisciplinary Studies ●	AA, AS



HEALTH SCIENCES (HS)

Certified Nursing Assistant ●●	CA
Clinical Laboratory Assistant ●●	CA
Clinical Medical Assistant ●●	CC
Coding Core for Healthcare Professionals ●●	CA
Community Health & Leadership	AS
Dental Hygiene ●	AAS
Emergency Medical Technician Training	CA
Exercise Science/Kinesiology	AS
Fitness Technician	AAS
Health Science ●	AS
Medical Coding & Billing ●●	CP
Medical Office Administration ●●	CP
Mortuary Science ●	AAS
Nursing ●	AAS
Occupational Therapy Assistant ●	AAS
Pharmacy Technician Training ●●	CC
Physical Therapist Assistant ●	AAS
Pre-Medical & Health Sciences	AS
Radiologic Technology ●	AAS
Respiratory Therapy ●	AAS
Surgical Technology ●	AAS
Interdisciplinary Studies ●	AA, AS



COMPUTER SCIENCE & INFORMATION TECHNOLOGIES (CSIT)

Computer Programming ●●	CA
Computer Science & Information Systems	AS, AAS
Desktop Support Technician ●●	CA
Enterprise Network 2 ●●	CA
Geographic Information Systems	CP
Geospatial Technology	AAS
Network Administrator-MCITP:SA ●●	CP
Network Engineer ●●	CP
Network Support Technician ●●	CA
Networking Technologies ●●	CA
Windows Network Administrator ●●	CA
Windows Server Administrator ●●	CA
Interdisciplinary Studies ●	AA, AS



HUMANITIES (HU)

American Sign Language	AA
ASL/English Interpreting ●	AAS
English as a Second Language ●●	
English Studies	AS
History	AA
International Studies	AA
Philosophy/Religious Studies	AA
Writing	CP
Writing Studies	AS
Interdisciplinary Studies ●	AA, AS



CONSTRUCTION, MANUFACTURING & APPLIED TECHNOLOGIES (CMAT)

Advanced Manufacturing Apprenticeship	AAS	Electronics Assembly Technician ●●	CA
Advanced PLC & Robotics Technician ●●	CA	Energy Management ●	AAS
Aerospace/Aviation Maintenance Technology	AAS	Engineering Design/Drafting Technology	AS
Air Conditioning/Heating/Refrigeration ●●	CC	Heating, Cooling & Refrigeration Technology Apprenticeship	AAS, CA
Aircraft Electronics	CP	Machining CNC/CAM Technology	CC
Automation & Instrumentation Technician ●●	CC	Manual Machinist ●●	CA
Automotive Collision Repair	CC	Master Automobile Service Technician	AAS
Automotive Collision Repair & Refinishing	AAS	Motorcycle & Outdoor Power Equipment Technology	CP, CC
Automotive Maintenance & Light Repair	CC	Non-Destructive Testing: Ultrasonics	CC
Automotive Refinishing	CC	Eddy Current	CC
Automotive Technician	AAS	Radiography	CC
Automotive Undercar Specialist ●●	CP	Technology	AAS
Brick Mason ●●	CA	Plumber/Pipefitter JATC Technology Apprenticeship	AAS, CA
Brick Mason Technology Apprenticeship	AAS	Plumbing Independent Technology Apprenticeship	AAS, CA
Cabinetmaking & Furniture Construction	CC	Professional Truck Driving CDL ●●	CA
Certified Electronics Technician ●●	CP	Refrigeration JATC Technology Apprenticeship	AAS, CA
CNC Operator ●●	CA	Stagehand JATC Technology Apprenticeship	AAS, CA
Collision, Maintenance & Light Repair	AAS	Sustainable Building Construction	CC
Construction Laborer ●●	CA	Welding Fabrication & Inspection	AAS
Construction Management	AS	Welding Technology ●●	CC
Construction Management & Sustainable Building	AAS	Interdisciplinary Studies ●	AA, AS
Diesel Service Technician ●●	CP		
Diesel Service Technician & Driver ●●	CC		
Diesel Systems Technology	AAS		
Diesel Systems Technology Apprenticeship	AAS, CA		
Electrical Independent Technology Apprenticeship	AAS, CA		

"Do not be discouraged if during your journey you find obstacles, they are the ones that make you more resilient. Having good grades do not say everything about you, they do not make you less than anyone else, don't let anyone stop you from reaching your goals. Show interest and passion in what you like, have the courage to expose yourself and express your ideas, and step out of your comfort zone to create my own self."

– Asia Rondoni, SLCC Student





SCIENCE, ENGINEERING & MATHEMATICS (SEM)

Atmospheric Science.....	AS
Biology.....	AS, APS
Biotechnology.....	AS, CP
Chemistry.....	AS
Engineering (Traditional or Full).....	APE
Engineering Design & Manufacturing Technology.....	CC
Engineering Drafting & Manufacturing Technology.....	CC
Environmental Science & Sustainability.....	CP
Geographic Information Science.....	AS
Geology.....	AS
Mathematics.....	AS
Physics.....	AS
Small Unmanned Aerial Systems.....	CP
Interdisciplinary Studies ●.....	AA, AS

HONORS PROGRAM

If you want to engage in rigorous classes and prepare for an honors program at a four-year school in Utah, apply for competitive admissions to the SLCC Honors Program at the beginning of your degree.

slcc.edu/honors

@ slcchonors

INTERDISCIPLINARY STUDIES (IDS)

If you want to create your own major or combine multiple disciplines in a rigorous, self-designed AA/AS degree and are certain about transferring to a four-year school, IDS may be the option for you.

slcc.edu/interdisciplinary-studies

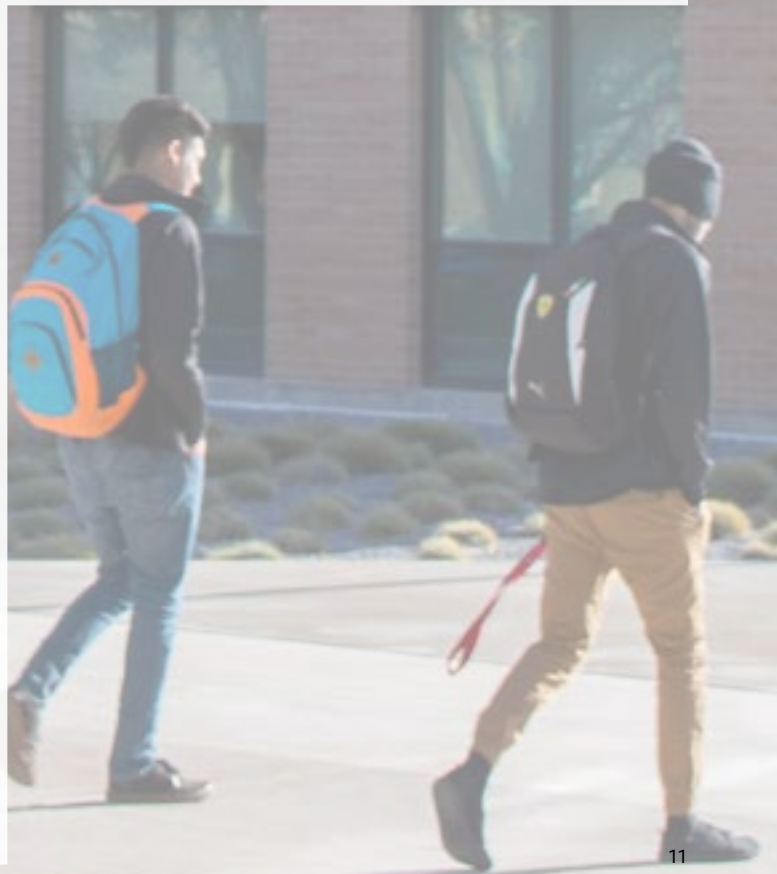


SOCIAL & BEHAVIORAL SCIENCES, EDUCATION & HUMAN SERVICES (SBEH)

Anthropology.....	AA, AS
Criminal Justice.....	AS, AAS
Cultural Resource Management.....	CP
Economics.....	AS
Education.....	AS
Family and Human Studies.....	AS, AAS, CC
Outdoor Adventure Parks & Recreation.....	AS
Peace Officer Basic Training.....	CA
Political Science.....	AS
Psychology.....	AS
Social Work.....	AS
Sociology.....	AS
Special Function/Reserve Officer Training.....	CA
Interdisciplinary Studies ●.....	AA, AS

Major options are subject to change.
Visit SLCC's online catalog for up-to-date information.

slcc.edu/catalog



HANDS-ON LEARNING





APPRENTICESHIPS

On-the-job training and certification can jump-start your career as an Electrician, Plumber or Heating, Ventilation and Air Conditioning Technician.

slcc.edu/satts

CAREER & TECHNICAL EDUCATION (CTE)

Great-paying, hands-on jobs require specific training and knowledge. A college degree from SLCC's CTE programs will open doors to Nursing, Emergency Medical Technician (EMT), Automotive Technician, Film Production Technician, Geospatial Technology and Culinary Arts careers, among others.

slcc.edu/cte

SALT LAKE TECHNICAL COLLEGE (SLTC)

You've been in school most of your life, and maybe the thought of four, five or six more years of school isn't for you. Salt Lake Technical College can help you start your career.

Salt Lake Technical College doesn't have traditional semesters, so start times are more flexible. You may be able to move through the curriculum more quickly if you already have skills or knowledge in your area of interest through prior coursework, on-the-job training, military training or other life and work experience.

slcc.edu/sltech

WORKFORCE TRAINING & EDUCATION

READY TO WORK IN A CAREER THAT WILL CHALLENGE YOUR MIND AND REWARD YOU FOR YOUR SKILLS?

Workforce Training & Education offers quality and affordability, with hundreds of classroom and online courses from instructors who are leaders in their fields. Many of our programs are created with Utah industry partners, making your credentials stand out in the job market.

From advanced manufacturing to web development, and dozens of options in between, we can help you accelerate your career path.

WE CAN HELP YOU:

- Build useful products from modern composites (Advanced Manufacturing)
- Make professional strides in business (Business & Management)
- Transform the energy industry (Energy Efficiency, Renewable & Automation)
- Master in-demand IT skills (IT and Computer Applications)
- Focus on career and personal growth (Personal Development/ED4Life Online)
- Mold the future of the trades (Technical Training & Continuing Licensure)
- Create transportation solutions (Transportation)

WTE has multiple funding sources to pay part or all of your training program.

🖱️ slcc.edu/continuinged

📷 slcc.workforce



CAMPUS LOCATIONS

1. WESTPOINTE WORKFORCE TRAINING & EDUCATION CENTER (WWTE)

2150 W Dauntless Avenue
Salt Lake City, UT 84116
801-957-2150

2. INTERNATIONAL AVIATION EDUCATION CENTER (AP)

551 N 2200 West
Salt Lake City, UT 84116
801-957-2050

3. SOUTH CITY CAMPUS (SCC)

1575 S State Street
Salt Lake City, UT 84115
801-957-3350

4. WEST VALLEY CENTER (WVC)

3460 S 5600 West
West Valley City, UT 84128
801-957-2117

5. TAYLORSVILLE REDWOOD CAMPUS (TRC)

4600 S Redwood Road
Salt Lake City, UT 84123
801-957-4073

6. JORDAN CAMPUS (JC)

3491 W 9000 South
West Jordan, UT 84088
801-957-2600

7. LARRY H. MILLER CAMPUS (LHMC)

9750 S 300 West
Sandy, UT 84070
801-957-5417

8. HERRIMAN ANNEX (HCAX)

13011 S Pioneer Street
Herriman, UT 84096
801-957-5225

OPENING FALL 2023

9. HERRIMAN CAMPUS

14551 South Sentinel Ridge Blvd
Herriman, Utah 84096

SLCC ONLINE

SLCC Online provides an innovative and flexible online learning experience.

slcc.edu/online

UTA TRANSIT PASS

SLCC provides free transit passes to all active students, faculty and staff. The pass is valid on UTA buses, TRAX and FrontRunner.

slcc.edu/onecard/utaedpass.aspx



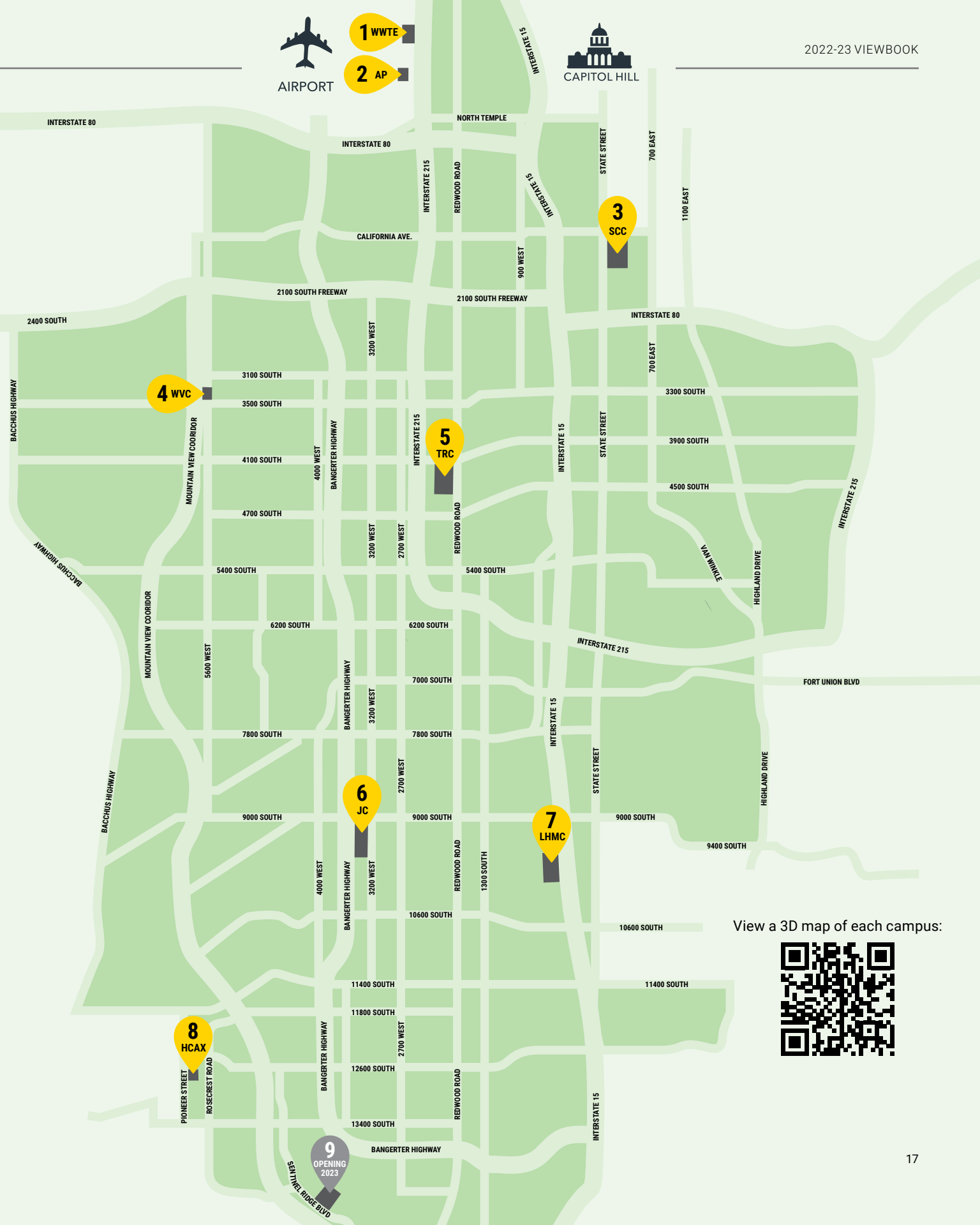
AIRPORT

1 WWTE

2 AP



CAPITOL HILL



View a 3D map of each campus:



EXPERIENCE YOUR LEARNING



STEM PROJECTS AND RESEARCH

Students can look through the STEM Project and Research Catalog to participate in existing opportunities that go far beyond the lecture hall. Student work is presented annually at the Undergraduate Projects & Research Conference.

🔗 slcc.edu/stem/projects-research/catalog.aspx

CAMPUS INTERNSHIP PROGRAM

The Campus Internship Program provides SLCC students with the opportunity to obtain a paid internship on campus to develop skills, gain experience, create a network and build on current and future educational and career goals.

🔗 slcc.edu/careerservices/cip

LEARN AND SERVE

Get involved in issues you care about by engaging in your community! Through community engaged learning classes, you see firsthand how course content applies to the real world. Create a positive change while also earning academic credit!

🔗 slcc.edu/service-learning/student

📷 [slccengagedlearning](#)

STUDY AWAY

Study Abroad and Domestic Study are collectively known as Study Away and are linked to credit-bearing courses. Lose yourself in another part of the world or discover a new culture near you.

Travel to an international destination as a part of your academic journey. Examine global issues and gain experience with different cultures and countries.

🔗 slcc.edu/studyabroad

You can also immerse yourself in a place-based Domestic Study experience where you participate in academic study in a U.S. location.

🔗 slcc.edu/engaged-learning-office/domestic-study

📷 [slccengagedlearning](#)

ATHLETICS

2022-2023

🔗 slccbruins.com

📷 [slccbruins](#)

TEAM TRYOUTS

Tryouts vary based on the team. Please contact the Coach for additional information.

🔗 slccbruins.com/sports/general



BASEBALL
2021-2022
Region 18 Champs
Overall Record: 46-8



WOMEN'S SOCCER
2021-2022
Region 18 Champs
Overall Record: 16-4-1

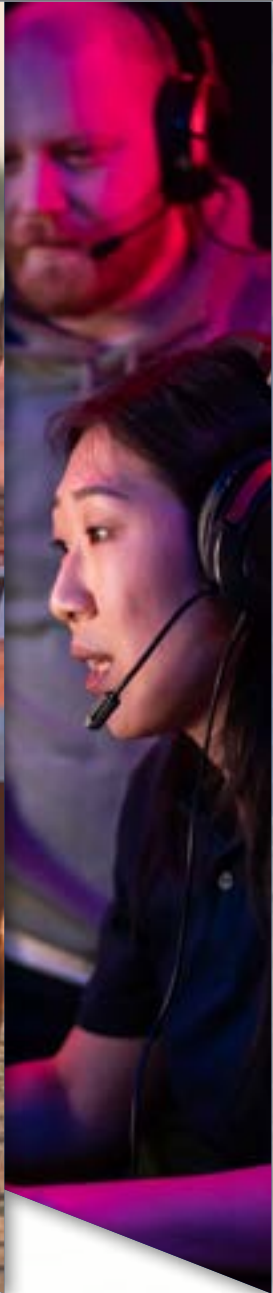


MEN'S SOCCER
2021-2022
Region 18 Champs
Overall Record 19-1
NJCAA National
Runner Up (2nd Place)



VOLLEYBALL
2021-2022
3rd in Region 18
Overall Record 22-6





MEN'S BASKETBALL
2021-2022
Region 18 Champs
Overall Record: 35-2
NJCAA National
Runner Up (2nd Place)

WOMEN'S BASKETBALL
2021-2022
3rd in Region 18
Overall Record 21-9

SOFTBALL
2021-2022
2nd in Region 18
Overall Record 37-17

CROSS COUNTRY
New Sport

eSPORTS
New Sport

STUDENT SUCCESS



TRIO STUDENT SUPPORT SERVICES (SSS) & SCIENCE, TECHNOLOGY, ENGINEERING & MATH (STEM)

TRIO SSS & STEM provide community, support and resources to first-generation and low-income students in the form of academic and financial planning, finding money for tuition, navigating the transfer process and one-on-one and group peer tutoring.

🖱️ slcc.edu/trio

@ slcc_trio

OFFICE OF DIVERSITY & MULTICULTURAL AFFAIRS (ODMA)

The ODMA actively celebrates and supports diverse students through success coaching, cultural programming, advising, multicultural student group meetings and more.

🖱️ slcc.edu/diversity

@ slcc_diversity

GENDER & SEXUALITY STUDENT RESOURCE CENTER (GSSRC)

The GSSRC supports womxn and LGBTQ+ students to navigate SLCC and connect with peers through programming, support groups, education and advocacy and provides equitable spaces on campus.

🖱️ slcc.edu/gssrc

@ slccgssrc

DREAM CENTER

The Dream Center provides individualized advising and scholarship support to undocumented students (with and without DACA) and mixed-status families, including Temporary Protective Status (TSP) recipients, asylum seekers, international students and children of immigrants.

🔗 slcc.edu/dreamcenter

@ [slccdreamcenter](#)

CAREER SERVICES

Trained career coaches help students create individualized life plans, explore majors, find jobs or internships, and practice networking and interviewing. Career Services encourages students to visit their offices early and often.

🔗 slcc.edu/careerservices

@ [slcc_careerservices](#)

📍 [slcccareerservices](#)

BRUIN PANTRY

Meeting basic needs: Visit one of our Bruin Pantry locations to get free groceries and learn about the many college and community resources available to you.

🔗 slcc.edu/bruinpantry

BRUIN SCHOLARS

The Bruin Scholars program supports first-generation, undocumented, transitioning-out-of-foster care and returning students, as well as any student who desires help navigating college. Our peer and staff mentors provide a wide range of guidance, including registration assistance.

🔗 slcc.edu/oss/student-success/bruin.aspx

DISABILITY RESOURCE CENTER (DRC)

The DRC makes all aspects of college inclusive and accessible to students who may need accommodations. Students should reach out for support from the DRC early and often.

🔗 slcc.edu/drc

@ [slcdrc](#)

VETERANS CENTER

SLCC Veterans Services provides hands-on assistance to you and your dependents, helping you obtain your VA educational benefits, use the GI Bill, and support you through graduation.

🔗 slcc.edu/veterans

"The SLCC community really feels like a family, and there are so many resources to support students in so many ways, it's unbelievable."

– Jessie Tembo, SLCC Student



STUDENT SUCCESS



GET INVOLVED

BUILD COMMUNITY



THAYNE CENTER FOR STUDENT LIFE, LEADERSHIP & COMMUNITY ENGAGEMENT

SLCC's Thayne Center connects students to the community, resources and programs that cultivate empowerment, leadership and social change.

slcc.edu/thaynecenter

[thaynecenter_slcc](#)

JOIN A CLUB

With over 60 clubs and organizations at SLCC, there is a group for everyone. If you can't find one you like, you can always start your own. Connect to what drives you—join a club!

slcc.edu/sll/clubs-and-orgs

ENGAGE WITH YOUR COMMUNITY

Whether you are completing service hours for an engaged learning class, enacting social change or have received work-study and choose to work with a community partner, you will be able to experience firsthand how in-classroom learning applies to the real world.

slcc.campusgroups.com

BECOME A LEADER

Do you want to develop leadership skills? Join the SLCC Student Association to plan and market student activities, take part in leadership development and advocate for your classmates.

slcc.edu/sll

[slccsa](#)



"If you focus on your studies, you will go far, but if you decide to get involved in campus activities while taking your classes, that will carry you farther."

– Rosillah Nalule, SLCC Student

EXPRESS YOURSELF





CENTER FOR ARTS AND MEDIA

The state-of-the-industry Center for Arts and Media at South City Campus is an environment for sharing, creating, inspiring and collaborating. Students can express themselves through engaging classes, performances, concerts, screenings and more.

slcc.edu/arts

THE GRAND THEATRE

Catch a show like *A Raisin in the Sun*, *In the Heights* or *Into the Woods*, performed by professional and community actors in a historic theater. Students receive free admission with their OneCard.

grandtheatrecompany.com

[thegrandtheatre](#)

[thegrandtheatrefans](#)

GEORGE S. AND DOLORES DORÉ ECCLES ART GALLERY

This space is dedicated to the enjoyment and appreciation of visual arts through projects from student, community and international artists.

slcc.edu/art-gallery

[slcc_eccles_art_gallery](#)

STUDENT RESOURCES



"Don't be afraid to ask for help. It is so encouraged at this school. Help finding your classes, help looking for a major, even help finding a part time job that will work with your school schedule. There are so many resources here, I learn something new about the school all the time."

– Ashley Kaahue, SLCC Student

CHILD CARE SERVICES

Student parents can find reliable, high-quality child care on the Taylorsville, South City and Jordan campuses, often at little or no cost.

slcc.edu/childcare

SLCC RECREATION

Student health is part of student success. On-campus recreation facilities and classes are free to all SLCC students with their OneCard.

slcc.edu/recreation

STEM LEARNING RESOURCES

Students in STEM classes can find free drop-in and online tutoring, workshops, research and project opportunities, and textbook and scientific model checkout at all STEM Learning Centers.

slcc.edu/stem

STUDENT WRITING & READING CENTER

The SWRC helps students improve their writing and reading skills across subjects and in non-class writing, like resumes or scholarship applications. Free in-person and online consultations are available.

slcc.edu/swc

[@ slccswc](#)

CAMPUS BOOKSTORES

Textbooks, supplies and a good dose of school spirit can be found at our Campus Bookstores.

bkstr.com/slccstore

CENTER FOR HEALTH & COUNSELING

A one-stop shop for all your health and wellness needs! The CHC offers quality services including mental health counseling, medical services and massage therapy at affordable rates. Services are exclusive to SLCC students.

slcc.edu/chc

[@ slcc_chc](#)

[f slccchc](#)

LIBRARY SERVICES

Library services are available on four campuses and online and feature research materials in print and electronic formats, study spaces and computer labs. Research assistance is offered in-person or remotely.

libweb.slcc.edu

PAYING FOR COLLEGE



"One of the biggest reasons I dropped out was because I didn't think I could afford to finish my degree. But luckily, I was eligible for SLCC Promise and was closer to graduating than I had originally thought. This motivated me to finally finish what I started."

– Zachary McCray,
SLCC Student

FINANCIAL AID

Take away the worry of funding your education at SLCC by applying for financial aid, which can include grants, loans, work-study and scholarships. Get started by completing the Free Application for Federal Student Aid (FAFSA) online. The Office of Financial Aid provides FAFSA workshops to help you complete your application.

Fall Priority Date: April 15
Spring Priority Date: November 1
Summer Priority Date: April 1

🖱 studentaid.gov

🖱 slcc.edu/financialaid

📷 [slcc_ofas](#)

SCHOLARSHIPS

SLCC has many scholarship opportunities for first-year and continuing students. Scholarships are a great way to help pay for school. There are a lot of different types of scholarships available to individuals planning to attend SLCC.

🖱 slcc.edu/scholarships

SLCC PROMISE

SLCC Promise helps eligible students pay for their education by covering the cost of tuition and fees when Pell Grants fall short. SLCC Promise is intended to remove economic barriers and provide a pathway for SLCC students to complete their degrees.

🖱 slcc.edu/promise

OPEN SLCC

Provides students a cost effective alternative to traditional textbooks. To date, the total estimated student cost savings is \$21 million, with 11,730 sections and 243,153 SLCC students having benefited from the program.

🖱 slcc.edu/open



TUITION & FEES BREAKDOWN

Credit Hours	Resident Student Tuition & Fees	Non-Resident Student Tuition & Fees*	Apprenticeship Tuition & Fees
1	\$ 312.25	950.50	175.75
2	\$ 499.25	1,508.75	250.00
3	\$ 687.50	2,068.25	324.25
4	\$ 865.25	2,617.25	398.50
5	\$ 1,043.00	3,166.25	472.75
6	\$ 1,221.25	3,715.75	547.00
7	\$ 1,374.75	4,240.50	621.25
8	\$ 1,528.25	4,765.25	695.50
9	\$ 1,682.75	5,291.00	769.75
10	\$ 1,831.25	5,810.75	844.00
11	\$ 1,979.75	6,330.50	918.25
12-18	\$ 2,128.25	6,850.25	992.50
19	\$ 2,276.75	7,370.00	1,066.75
20	\$ 2,425.25	7,889.75	1,141.00
21	\$ 2,573.75	8,409.50	1,215.25
22	\$ 2,722.25	8,929.25	1,289.50
23	\$ 2,870.75	9,449.00	1,363.75
24	\$ 3,019.25	9,968.75	1,438.00
25**	\$ 3,167.75	10,488.50	1,512.25

TUITION & FEES

* Non-residents pay resident tuition for summer semester.

** Amount for each additional credit hour
Resident: \$148.50
Non-resident: \$519.75
Apprenticeship: \$74.25

slcc.edu/student/financial/tuition-fees.aspx

CONTACT THE ADMISSIONS OFFICE

Connect with an admissions advisor to learn about opportunities and resources at SLCC. We can help you complete the admissions application today!

slcc.edu/admissions

@ slccadmissions

f slccadmissions

RESIDENCY

Students are classified either as resident or non-resident at the time the application is received. If you have questions regarding your residency status, contact the admissions office.

slcc.edu/admissions/residency.aspx

QUICK FACTS

120+
COURSES AND
DEGREES AVAILABLE

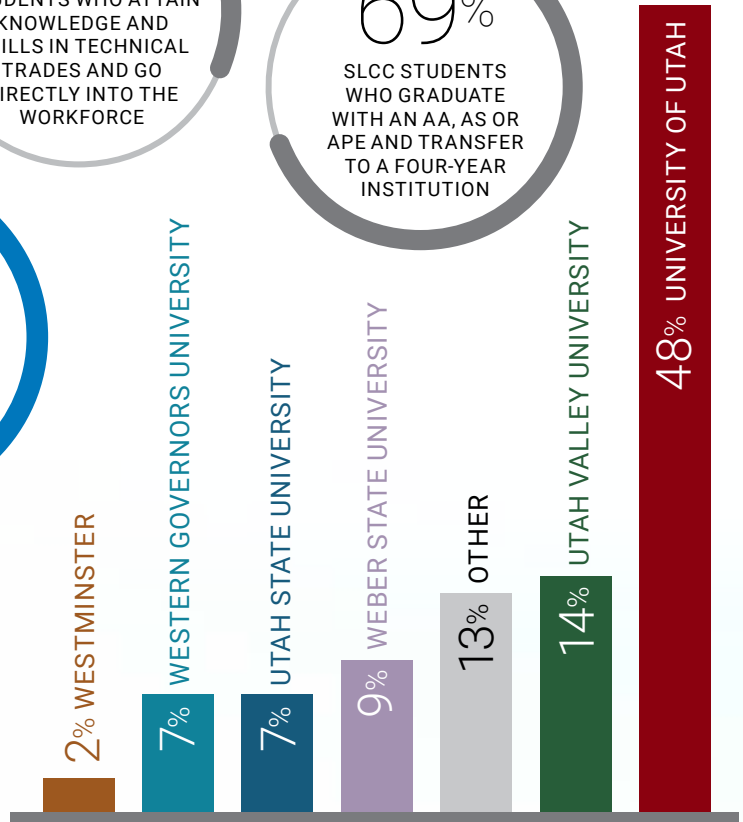
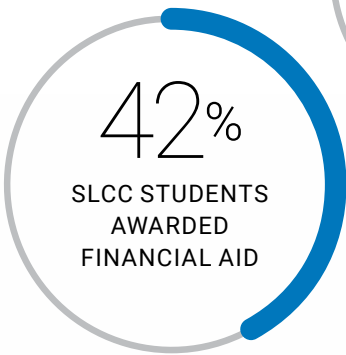
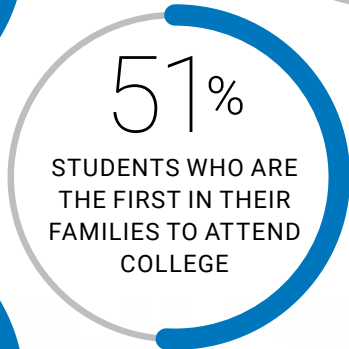
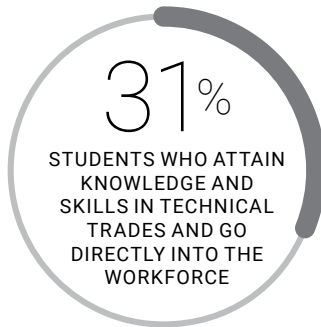
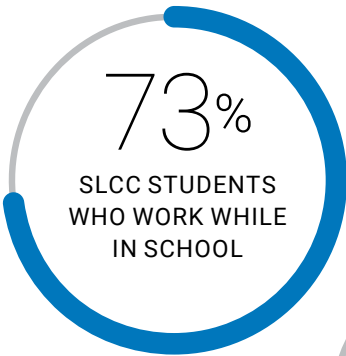
AVERAGE CLASS SIZE
18







8
AREAS OF STUDY

38,000+
STUDENTS WHO TAKE CLASSES
FOR COLLEGE CREDIT EACH YEAR

SLCC HAS THE
MOST DIVERSE
STUDENT BODY OF ANY HIGHER ED INSTITUTION IN THE STATE





-  slcc.edu
-  [saltlakecc](https://www.instagram.com/saltlakecc)
-  [saltlakecommunitycollege](https://www.facebook.com/saltlakecommunitycollege)
-  [saltlakecc](https://twitter.com/saltlakecc)
-  [slcctv](https://www.youtube.com/slcctv)
-  saltlakecommunitycollege

4600 S Redwood Road
Salt Lake City, UT 84123
801-957-4073
slcc.edu



AA/EO INSTITUTION • REV 08-16-2022