

# Impact Summary

## Community-Engaged Learning

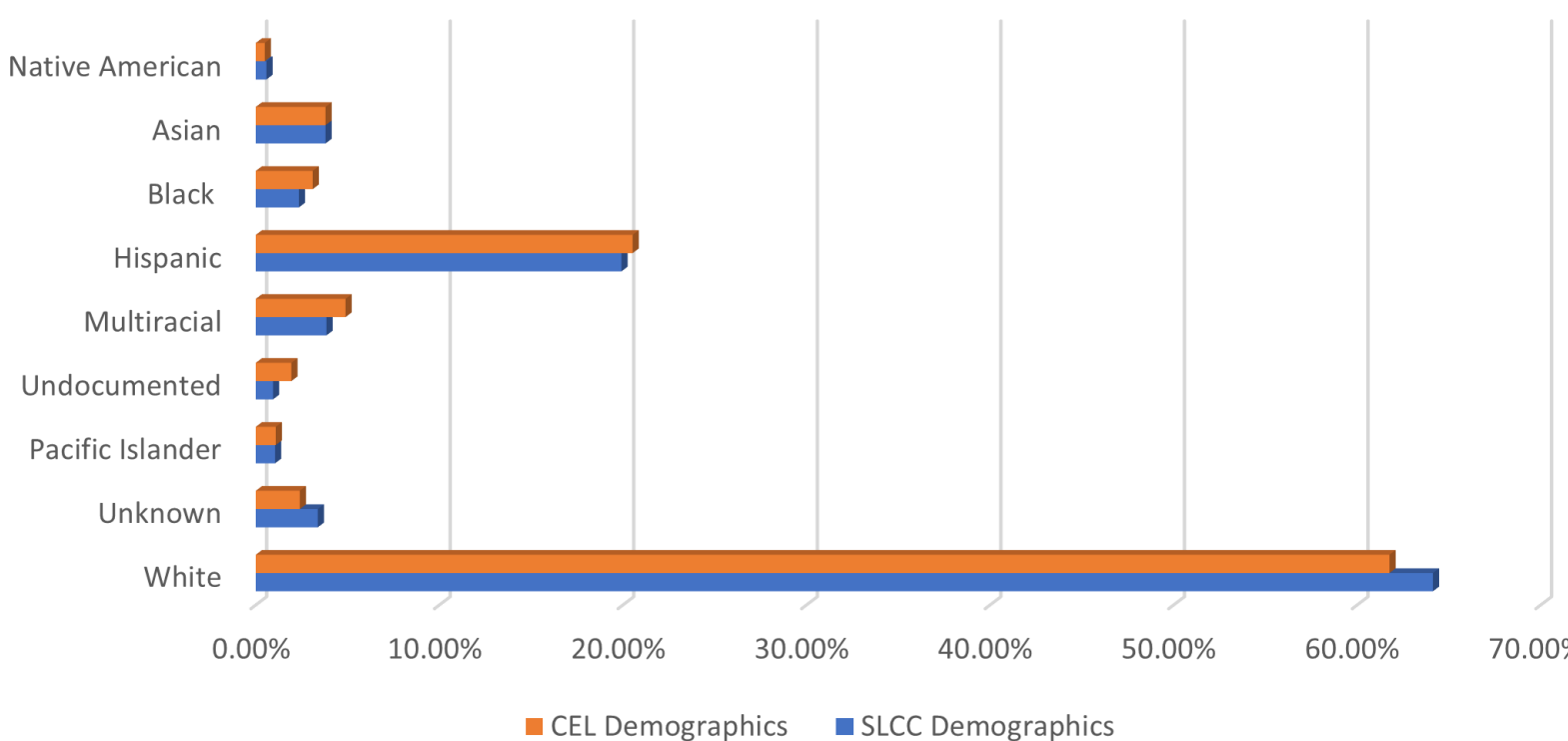
Community-Engaged Learning (CEL) supports the achievement of course learning outcomes through experiential service opportunities with community partners. Students learn about the academic discipline and important social issues while engaging in critical reflection.

**3,675**  
Students

**246**  
Course Sections

**64**  
CEL Faculty

Racial Demographic of Community-Engaged Learning Students in Comparison to Salt Lake Community College (SLCC) Population



# Civic Faculty Fellows

Civic Faculty Fellows is a distinction for civic-minded faculty members that promotes high-impact practices (such as CEL), supports engaged department efforts, and increases collaborative civic engagement efforts.



**FACULTY  
FELLOW**  
**Lisa Packer**

## Community- Engaged Learning Student Fund

The Community-Engaged Learning Student Fund supports students enrolled in community-engaged learning classes and select other programs. Students may request funding up to \$500 to offset costs directly related to their service projects!

**12** Approved  
Community-  
Engaged Learning  
Student Fund  
Proposals

**\$4,130**  
Funding for  
Community-Engaged  
Learning Projects

## Study Away

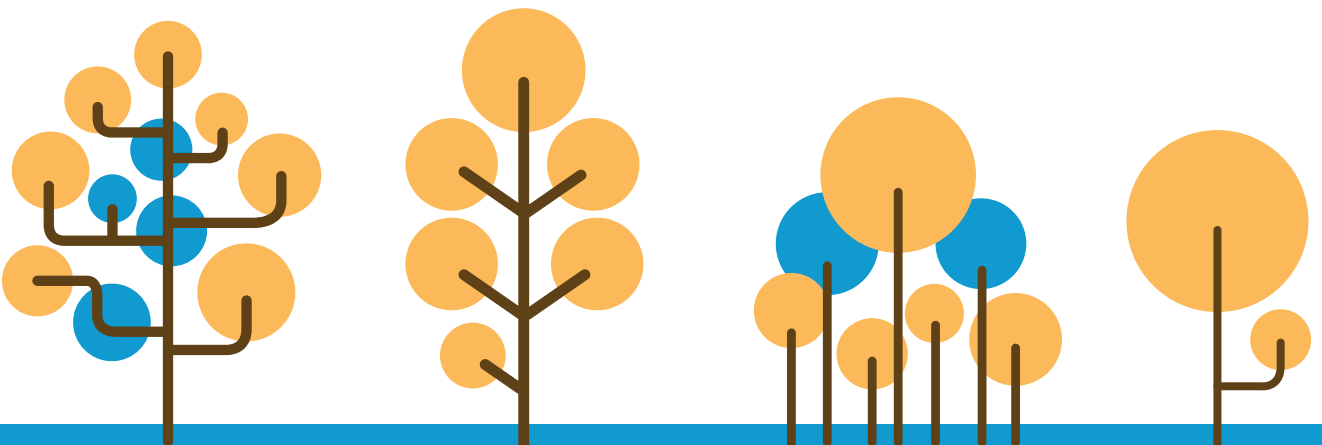
Study Away (Study Abroad and Domestic Study) integrates classroom and community-based experiential learning, where students gain an understanding of the diverse environments and cultures around us.

Students explore various cultures, human differences, languages, and natural environments while also learning about issues of racial, ethnic, and gender equity and human rights.



**Scholarship Funding Awarded**

**\$19,200.00**



Brought to you by:

**The ENGAGED LEARNING OFFICE (ELO)**

<http://www.slcc.edu/engaged-learning-office/index.aspx>

801-957-4688 OR 801-957-4694

