

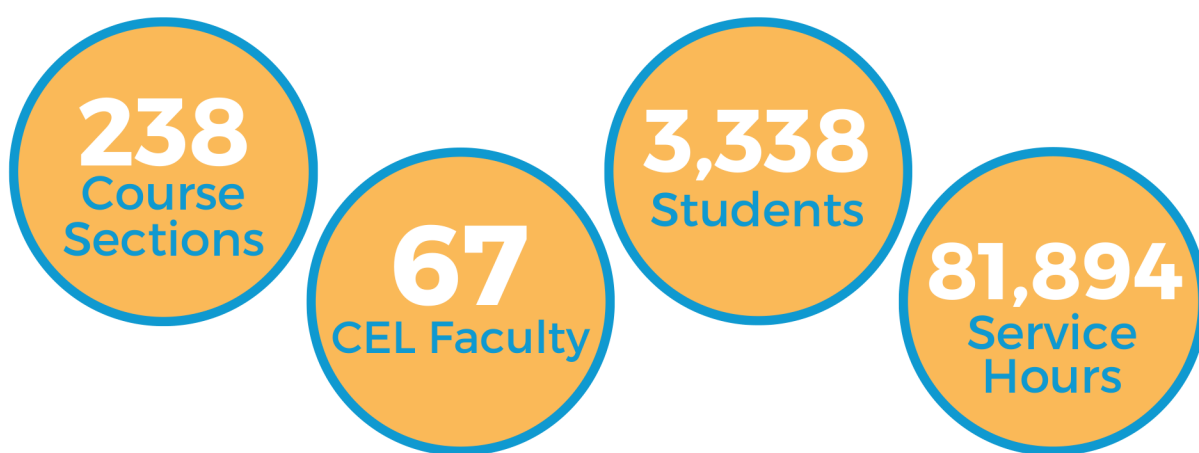


**2022
-
2023**

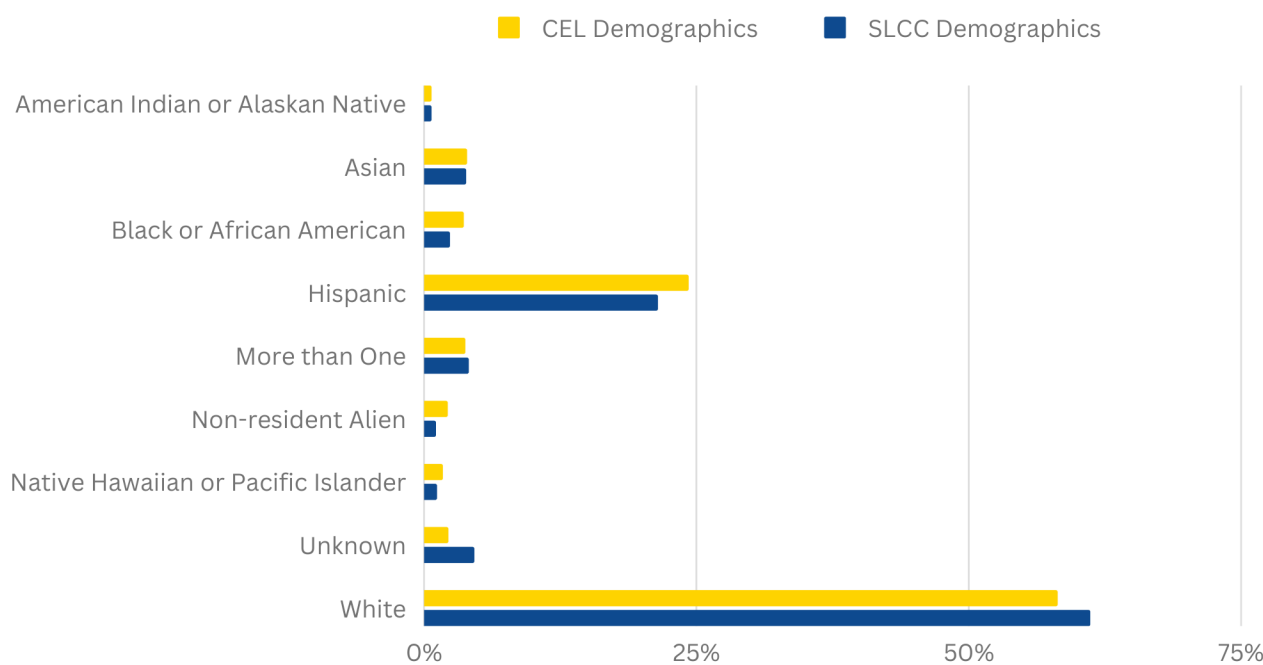
Impact Summary

Community-Engaged Learning

Community-Engaged Learning (CEL) supports the achievement of course learning outcomes through experiential service opportunities with community partners. Students learn about the academic discipline and important social issues while engaging in critical reflection.



Racial Demographic of CEL Students in Comparison to Salt Lake Community College (SLCC) Population



Civic Faculty Fellows

Civic Faculty Fellows is a distinction for civic-minded faculty members that promotes high-impact practices (such as CEL), supports engaged department efforts, and increases collaborative civic engagement efforts.

2 **FACULTY FELLOWS**
 Lisa Packer
 Jessica Berryman

Community-Engaged Learning Student Fund

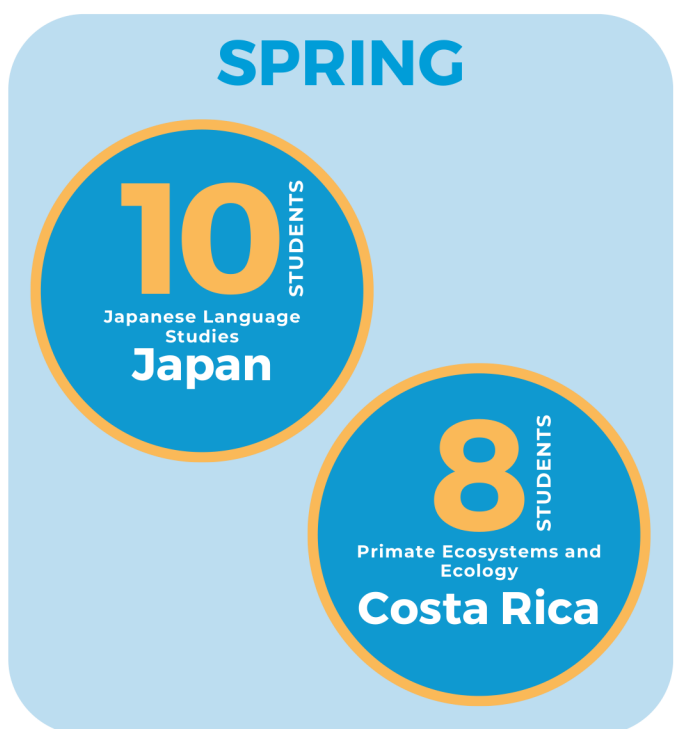
The CEL Student Fund supports students enrolled in CEL classes and select other programs. Students may request funding up to \$500 to offset costs directly related to their service projects!

9 Approved CEL Student Fund Proposals

\$3,120.26 Funding for CEL Projects

Study Away

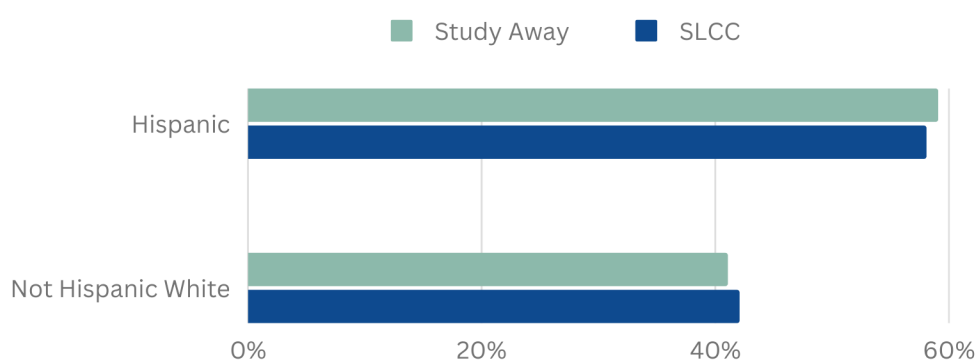
Study Away (Study Abroad and Domestic Study) integrates classroom and community-based experiential learning, where students gain an understanding of the diverse environments and cultures around us. Students explore various cultures, human differences, languages, and natural environments while also learning about issues of racial, ethnic, and gender equity and human rights.



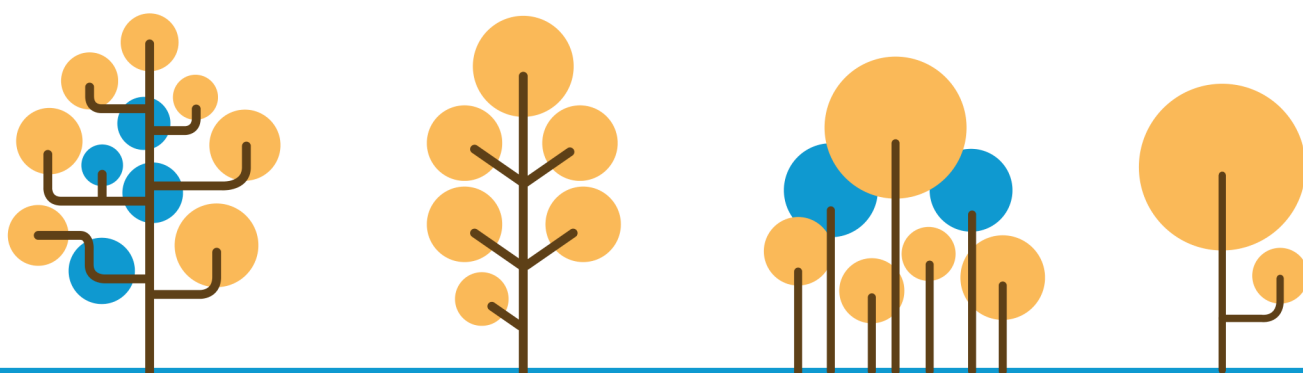
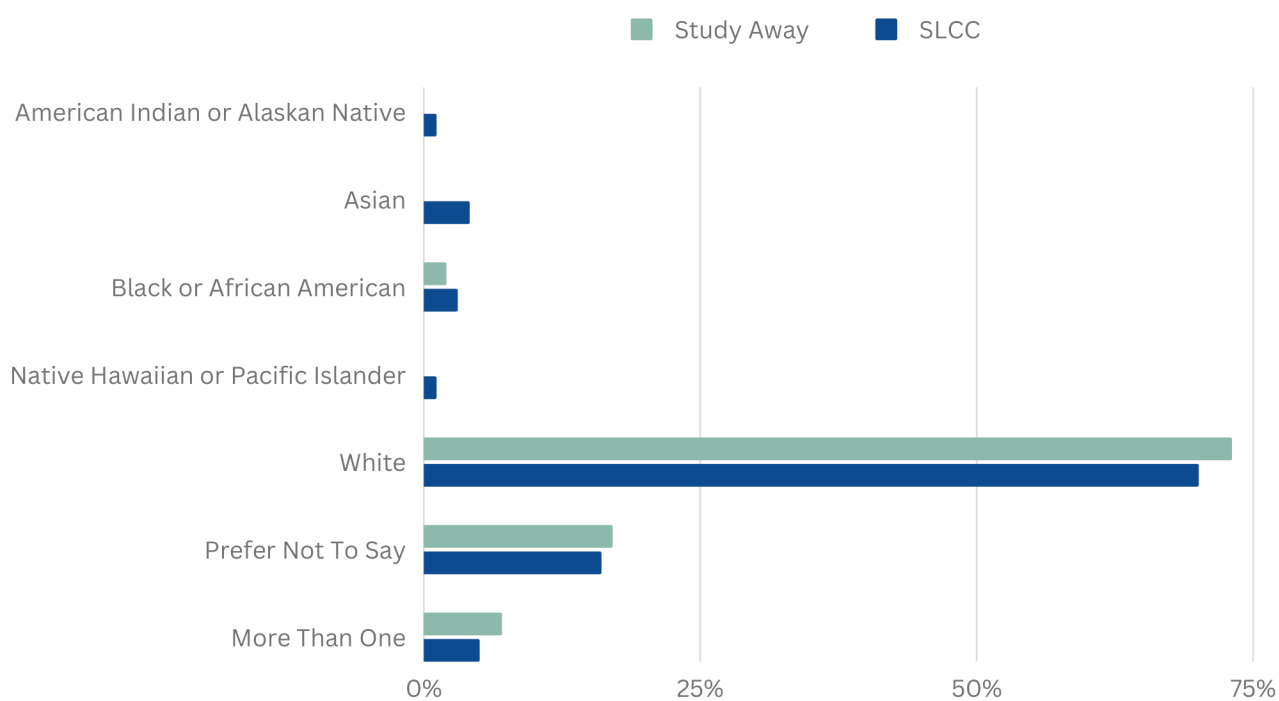
Scholarship Funding Awarded

\$33,488

Ethnic Demographic of Study Away Students in Comparison to SLCC Population



Racial Demographic of Study Away Students in Comparison to SLCC Population



Brought to you by:
The ENGAGED LEARNING OFFICE (ELO)
<http://www.slcc.edu/engaged-learning-office/index.aspx>
 801-957-4688 OR 801-957-4694

