



ENGAGED
— LEARNING —

Impact Summary

2023
-
2024

Community-Engaged Learning

Community-Engaged Learning (CEL) supports the achievement of course learning outcomes through experiential service opportunities with community partners. Students learn about the academic discipline and important social issues while engaging in critical reflection.

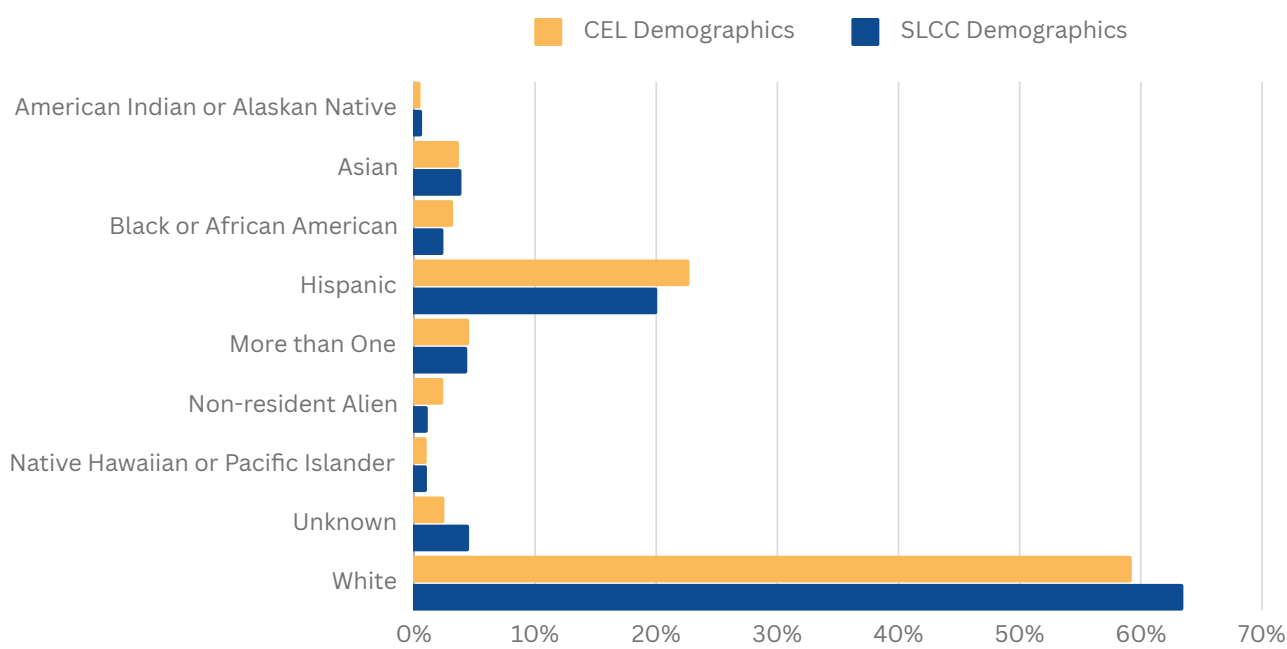
239
Course Sections

65
CEL Faculty

3,756
Students

90,600
Service Hours

IPEDS Race and Ethnic Demographic of CEL Students in Comparison to Salt Lake Community College (SLCC) Population



Community-Engaged Learning Student Fund

The CEL Student Fund supports students enrolled in CEL classes and select other programs. Students may request funding to offset costs directly related to their service projects!

9

Approved CEL Student Fund Proposals

\$3,131
Funding for CEL Projects

Study Away

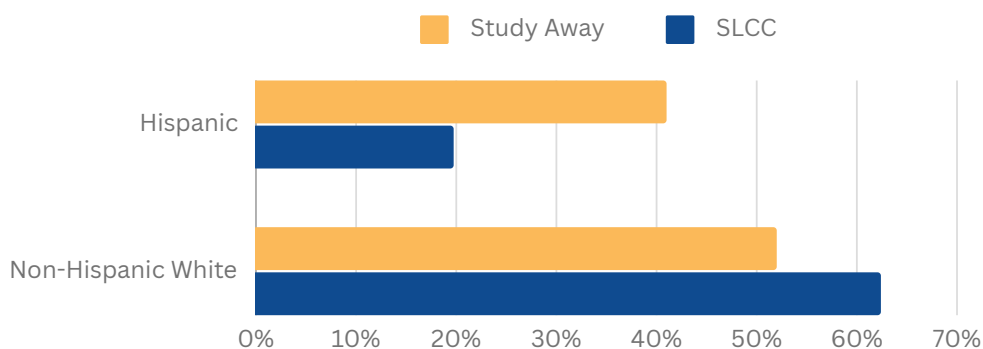
Study Away (i.e., Study Abroad and Domestic Study) integrates classroom and community-based experiential learning, where students gain an understanding of the diverse environments and cultures around us. Students explore various cultures, human differences, languages, and natural environments while also learning about critical social issues.



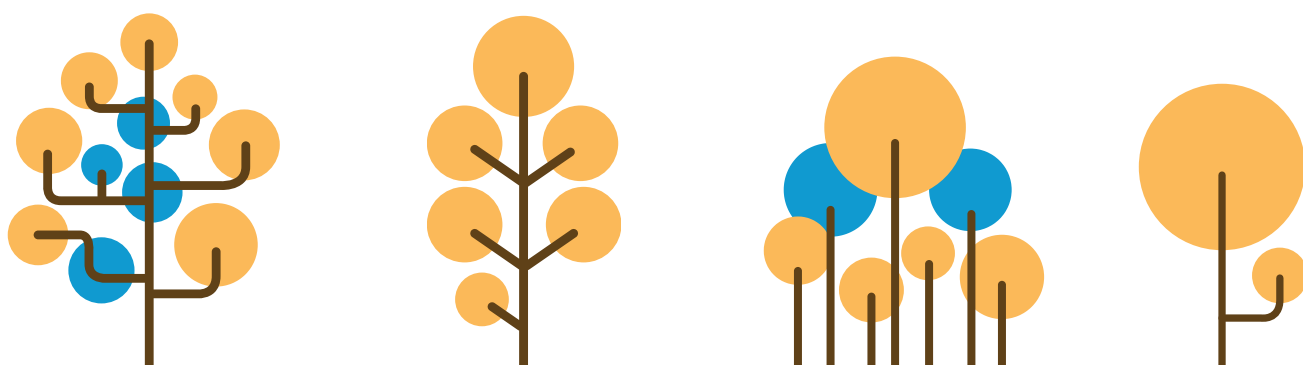
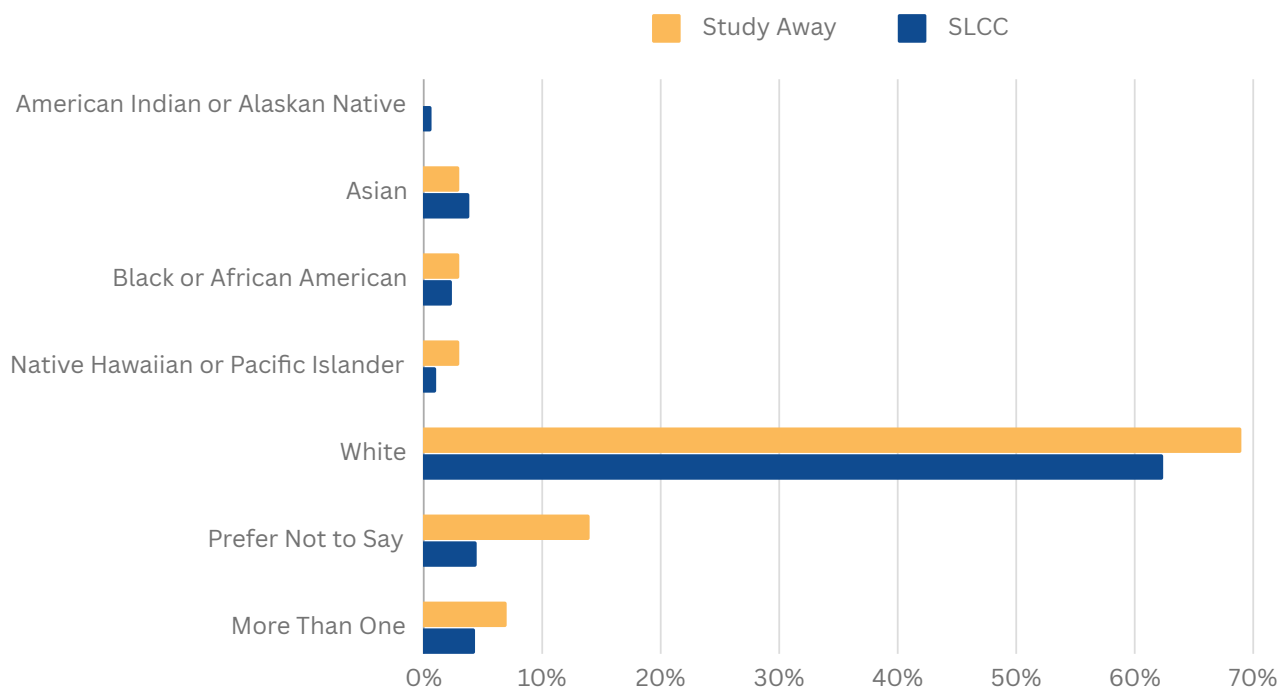
Scholarship Funding Awarded

\$30,875

Ethnic Demographic of Study Away Students in Comparison to SLCC Population



Racial Demographic of Study Away Students in Comparison to SLCC Population



Brought to you by:
The ENGAGED LEARNING OFFICE (ELO)
<http://www.slcc.edu/engaged-learning-office/index.aspx>
 801-957-4694

