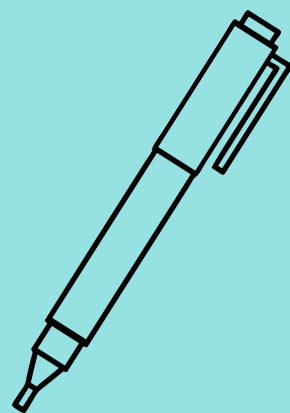


SLCC RESOURCES FOR SINGLE PARENTS



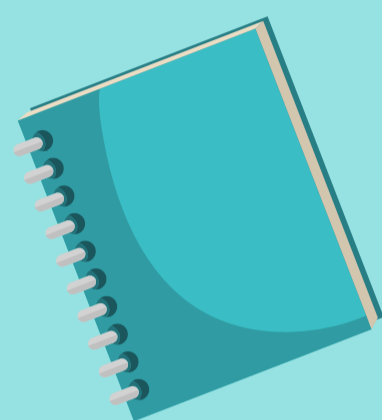
OFFICES TO HELP SUPPORT YOU IN YOUR ACADEMIC JOURNEY

-TRIO Programs: provide support for low-income and first-generation college students to access, graduate, and attain their educational, career, and personal goals in preparation for their contribution to a global workforce.

-Orientation and Student Success: teaching students study skills, life skills (such as stress management, time management, etc.), self-advocacy, self efficacy, and financial literacy.

-Office of Diversity & Multicultural Affairs: supports underrepresented ethnic students through mentoring, student access and success coaching, workshops, cultural programming and more.

-Career Services: explore careers, area of study, job or internship, networking, resume building and more!

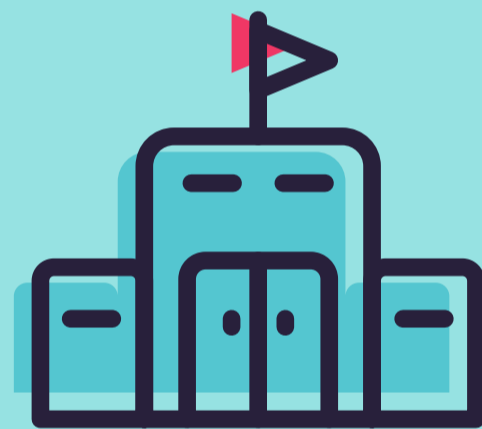


FINANCIAL AID & SCHOLARSHIPS

Awards students with financial resources that assist with access, continued enrollment, and completion.

Single Parent Scholarship:

<http://www.slcc.edu/childcare/docs/voucher-application.pdf>



BRUIN FOOD PANTRY

Providing food boxes, emergency funding, and gift cards to those in need during COVID-19.

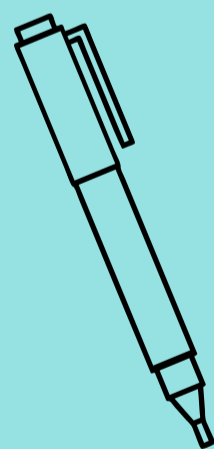
For more detailed info:

<https://www.slcc.edu/thaynecenter/programs-services/bruinpantry.aspx>

CENTER FOR HEALTH & COUNSELING

-Medical Health Services: Sick Visits, Minor Wound Care, Medical testing, Medical lab work, Preventative health screenings

-Counseling Services: Assists in helping students manage personal problems and situational crises. CS can help students coping with academic stress, develop self-awareness, personal growth, and skills for lifelong learning. Call (801)957-4268 to make a telehealth appointment.



CHILD CARE

-Locations are currently closed due to COVID-19.

Normal operation open to students with vouchers available: <http://www.slcc.edu/childcare/docs/voucher-application.pdf>

-Additional Childcare Resources (Employment, Nutrition, Financial Assistance):

<http://www.slcc.edu/childcare/helpful-links.aspx#>

If you need assistance in connecting to any of these departments please contact your TRIO advisor