

S  
L  
C  
C



*What would you like to create?*

Salt Lake  
Community  
College



future:engage//

success>today

i-got.this

run.becoming.

become.a.bruin#

college.is.for.me

activate.dreams

mode(winning)

go.to/college



# WHAT'S INSIDE

- 4 Become a Bruin
- 6 Degree & Course Options
- 8 Areas of Study
- 12 Salt Lake Tech
- 14 Workforce Training
- 16 Campus Locations
- 18 Experience Your Learning
- 20 Athletics
- 22 Student Success
- 26 Student Resources
- 28 Get Involved
- 30 Express Yourself
- 32 Paying for College
- 34 Quick Facts

## MISSION

Salt Lake Community College is your community college. We engage and support students in educational pathways leading to successful transfer and meaningful employment.

## VISION

SLCC will be a model for inclusive and transformative education, strengthening the communities we serve through the success of our students.





# BECOME A BRUIN

## ADMISSIONS

Fill out the application online and you are on your way to enrolling at SLCC!

🖱️ [slcc.edu/apply](https://slcc.edu/apply)  
(English & español)

🖱️ [slcc.edu/admissions](https://slcc.edu/admissions)

## PLACEMENT PROCESS

Complete the SLCC placement process before registering for the appropriate courses for your major.

🖱️ [slcc.edu/testing](https://slcc.edu/testing)

## NEW STUDENT ORIENTATION

Attend an orientation through the Orientation and Student Success office.

🖱️ [slcc.edu/oss/orientation](https://slcc.edu/oss/orientation)

📷 [orientation\\_slcc](https://www.instagram.com/orientation_slcc)

## COURSE REGISTRATION

Once you have completed the steps above, you are ready to meet with an academic advisor and register for courses.

🖱️ [slcc.edu/academicadvising](https://slcc.edu/academicadvising)



A photograph of three young men walking on a paved path on a college campus. The man on the left is wearing a striped t-shirt and khaki shorts. The man in the middle is wearing a white t-shirt and black shorts, carrying a brown messenger bag. The man on the right is wearing a dark striped polo shirt and light-colored shorts, carrying a black bag. In the background is a large brick building with many windows. The scene is brightly lit with sunlight creating a lens flare effect.

## VISIT CAMPUS

Take a tour of one of our campuses or attend one of our on-campus events.



## TRANSFER CREDIT

If you have taken courses at another institution, submit an official transcript when you apply to SLCC. Your classes will be evaluated so you receive the credit you have earned.

Did you take concurrent enrollment classes at SLCC in high school? Those credits will already be on your record and do not need to be resubmitted.



## DEGREES & CERTIFICATES

### ASSOCIATE OF SCIENCE (AS)

If you would like to complete your general education and prerequisite courses prior to transferring to a bachelor's degree program at a Utah public four-year college or university, this path is for you. This is a great option for students who want to structure their major for a specific area of study.

### ASSOCIATE OF ARTS (AA)

This degree choice is much like the AS degree with the addition of a foreign language requirement.

### ASSOCIATE OF APPLIED SCIENCE (AAS)

If you're interested in a fast track toward an entry-level career, this choice is right for you. AAS degrees require more major-specific courses with fewer general education requirements.

### ASSOCIATE OF PRE-ENGINEERING (APE)

This is a specialized program to prepare you for transferring seamlessly into an engineering program at a Utah public four-year college or university. You will be required to complete a significant amount of engineering coursework, while taking fewer general education courses.

### ASSOCIATE OF PRE-SCIENCE (APS)

Generally, graduates of SLCC's Associate of Pre-Science programs transfer seamlessly into science-specific majors at public universities in the Utah System of Higher Education.

### TECHNICAL CERTIFICATE

A structured program of study designed to meet the skilled needs of employers by preparing students for related employment in an occupation.

### ACADEMIC CERTIFICATE

A program of study designed with appropriate breadth, depth, sequencing, and synthesis of learning.

### WORKFORCE MICROCREDENTIALS

Workforce Training provides a broad range of short-term, non-credit programs that help individuals start new careers, build skills for their current jobs, renew industry certifications, and earn microcredentials that are aligned with employer needs and the job market.

# COURSE TYPES



## LECTURE

Lectures take place in person, on campus, and at a specific time and place. Some material may be provided in Canvas; most is delivered face to face. You may be asked to attend some classes virtually on an as needed basis during the semester.



## ONLINE

Online course instruction happens in Canvas, your “virtual classroom,” and are accessible anytime, anywhere. All interactions with your classmates and professor will happen online. Reliable internet is key. Some exams take place in a testing center.



## LIVESTREAM LECTURE

Livestream lectures are different from online courses; you must “attend” class virtually at a specified time through a web conferencing tool like Zoom or Microsoft Teams. Most, if not all, assignments will be completed in Canvas.



## HYBRID

The best of both worlds, hybrid courses combine in-classroom lectures with the flexibility of online learning. You will complete some course activities in Canvas and some in a classroom. The time division can vary from course to course.



## APPLIED AND SKILLED TRAINING PROGRAMS

Instructional labs are places students apply learning from faculty demonstrations, classroom lectures, and Canvas course content. Labs include equipment, tools, and software specific to careers in industry education pathways.

# ADDITIONAL COLLEGE CREDIT OPTIONS

## CONCURRENT ENROLLMENT

Concurrent Enrollment provides a challenging and rigorous college-level experience to high school students. Students in the program are awarded both college and high school credit.



[slcc.edu/concurrentenrollment](https://slcc.edu/concurrentenrollment)

## COMPETENCY-BASED EDUCATION (CBE)

The CBE model can give you college credit for life and work experience in areas like health care, technical support, truck driving, website design, and electronics and engine repair.



[slcc.edu/sltech](https://slcc.edu/sltech)

## CREDIT FOR PRIOR LEARNING

Salt Lake Community College is committed to the recognition of student learning that occurs outside of a formal classroom environment. In alignment with our current program offerings, each year CPL saves thousands of students time and money through assessments such as AP, CLEP, military training, language proficiency, portfolio evaluation, and more. Discover all CPL opportunities currently accepted at SLCC at:



[slcc.edu/CPL](https://slcc.edu/CPL)



801-957-3828

# AREAS OF STUDY



## SALT LAKE TECHNICAL COLLEGE

|   |             |
|---|-------------|
| Apprenticeship Training.....                | Certificate |
| Automotive .....                            | Certificate |
| Commercial Driver's License.....            | Certificate |
| Construction Management Skilled Trades..... | Certificate |
| Diesel Technology.....                      | Certificate |
| Electronics & Automation.....               | Certificate |
| English As A Second Language (ESL) .....    | Courses     |
| Health Care.....                            | Certificate |
| HVACR Technician .....                      | Certificate |
| Information Technology .....                | Certificate |
| Public Safety .....                         | Courses     |
| Welding.....                                | Certificate |



## ARTS, COMMUNICATION & DIGITAL MEDIA

|                                      |                 |                              |             |
|--------------------------------------|-----------------|------------------------------|-------------|
| Architecture.....                    | AS              | Video/Radio Production ..... | AAS         |
| Commercial Music.....                | AAS*            | Visual Art and Design:       |             |
| Communication Studies 🌐.....         | AS              | Animation.....               | AS, AAS     |
| Fashion Design & Merchandising ..... | AAS             | Fine Arts.....               | AS          |
| Film Production Technician.....      | AAS             | Graphic Design .....         | AAS         |
| Game Development .....               | Certificate     | Illustration .....           | AAS         |
| Graphic Communications 🌐.....        | AS, Certificate | Motion Graphics .....        | Certificate |
| Interior Design.....                 | AAS             | Multimedia .....             | AAS         |
| Journalism & Digital Media .....     | AS              | Photography .....            | AAS         |
| MIDI.....                            | Certificate     | Web Design.....              | AAS         |
| Music .....                          | AS              |                              |             |
| Music Recording Technology.....      | Certificate     |                              |             |
| Photography Foundations .....        | Certificate     |                              |             |
| Technical Theatre .....              | Certificate     |                              |             |
| Theatre Arts.....                    | AS              |                              |             |



[slcc.edu/catalog](http://slcc.edu/catalog)





## BUSINESS

|                            |        |                                 |             |
|----------------------------|--------|---------------------------------|-------------|
| Business ●.....            | AA, AS | Hospitality Management .....    | AS          |
| Business Management ●..... | AAS    | Paralegal Studies .....         | AAS         |
| Culinary Arts.....         | AAS    | Professional Sales ●.....       | Certificate |
| Economics.....             | AS     | Small Business Management ..... | AAS         |



## CONSTRUCTION, MANUFACTURING, & APPLIED TECHNOLOGIES

|   |     |  |                  |
|---|-----|--|------------------|
| Advanced Manufacturing .....                      | AAS | Automotive Collision Repair and Refinishing..... | AAS              |
| Apprenticeship Training:                          |     | Aviation Maintenance .....                       | Certificate, AAS |
| Diesel Systems Technology.....                    | AAS | Construction Management .....                    | AS, AAS          |
| Electrical Independent Technology .....           | AAS | Diesel Systems Technology .....                  | AAS              |
| Heating Cooling and Refrigeration Technology .... | AAS | Master Automobile Service Technician.....        | AAS              |
| Plumbing Independent Technology .....             | AAS | Nondestructive Testing .....                     | Certificate, AAS |
|   |     | Welding Fabrication and Inspection .....         | AAS              |



## HEALTH SCIENCES

|                                       |     |                                     |     |
|---------------------------------------|-----|-------------------------------------|-----|
| Community Health & Leadership .....   | AS  | Physical Therapist Assistant ●..... | AAS |
| Dental Hygiene ●.....                 | AAS | Pre-Health Sciences.....            | AS  |
| Fitness Technician .....              | AAS | Radiologic Technology ●.....        | AAS |
| Mortuary Science ●.....               | AAS | Respiratory Therapy ●.....          | AAS |
| Nursing ●.....                        | AAS | Surgical Technology ●.....          | AAS |
| Occupational Therapy Assistant ●..... | AAS |                                     |     |

● Selective Admission Major  
● Competency-Based  
● Offered Online

(AS) Associate of Science  
(APE) Associate of Pre-Engineering  
(AA) Associate of Arts

(APS) Associate of Pre-Science  
(AAS) Associate of Applied Science



## HUMANITIES

|                                  |     |                             |        |
|----------------------------------|-----|-----------------------------|--------|
| American Sign Language .....     | AA  | Humanities .....            | AA, AS |
| ASL/English Interpreting ● ..... | AAS | International Studies ..... | AA     |
| English Studies .....            | AS  |                             |        |



## SCIENCE, MATHEMATICS & ENGINEERING

|   |             |   |             |
|---|-------------|---|-------------|
| Biology .....   | AS          | Exercise Science / Kinesiology .....          | AS          |
| Biotechnology ● .....                                 | AS          | Geographic Information Systems .....          | Certificate |
| Chemistry .....                                       | AS          | Geographic Information Systems & Drones ..... | AAS         |
| Computer Science .....                                | AS          | Mathematics .....                             | AS          |
| Earth & Environmental Sciences .....                  | AS          | Micro-Nanotechnology .....                    | Certificate |
| Engineering .....                                     | APE         | Outdoor Adventure Parks and Recreation .....  | AS          |
| Engineering Design/Drafting Technology .....          | AS          | Physics .....                                 | AS          |
| Engineering Design Manufacturing Technology .....     | AAS         | Small Unmanned Aerial Systems .....           | Certificate |
| Engineering Drafting & Manufacturing Technology ..... | Certificate |   |             |



## SOCIAL & BEHAVIORAL SCIENCES, EDUCATION & HUMAN SERVICES

|  |                 |  |             |
|--|-----------------|--|-------------|
| Anthropology: Cultural Resource Management ..... | Certificate     | Political Science 🌐 .....              | AS          |
| Behavioral Health Technician .....               | Certificate     | Psychology 🌐 .....                     | AS          |
| Criminal Justice 🌐 .....                         | AS, AAS         | Social & Behavioral Sciences .....     | AA, AS      |
| Education 🌐 .....                                | AS              | Social Work .....                      | AS          |
| Family and Human Studies 🌐 .....                 | AS, Certificate | Substance Use Disorder Counselor ..... | Certificate |

● Selective Admission Major  
● Competency-Based  
🌐 Offered Online

(AS) Associate of Science  
(APE) Associate of Pre-Engineering  
(AA) Associate of Arts

(APS) Associate of Pre-Science  
(AAS) Associate of Applied Science



## WORKFORCE TRAINING

Advanced Manufacturing ..... Workforce Microcredential  
Automotive ..... Workforce Microcredential  
Business Office ..... Workforce Microcredential  
Computer & Networking ..... Workforce Microcredential  
Electronics ..... Workforce Microcredential

Energy ..... Workforce Microcredential  
Licensure & Renewals ..... Professional Licensing  
Media & Web ..... Workforce Microcredential  
Teacher Education ..... Workforce Microcredential



## ONLINE PROGRAM OFFERINGS

If you're interested in taking classes online, a significant number of SLCC programs offer a robust pathway from introductory classes to the final courses to complete a degree or a certificate. SLCC Online is a nationally ranked online institution with a clear focus on quality and valuable student support.

Business ..... AA, AS  
Business Management ..... AAS  
Communication Studies ..... AS  
Criminal Justice ..... AS, AAS  
Education ..... AS  
Family & Human Studies ..... AS  
Graphic Communications ..... AS, Certificate

Humanities ..... AA  
Marketing Management ..... AAS  
Political Science ..... AS  
Professional Sales ..... Certificate  
Psychology ..... AS  
Retail Management ..... Certificate

## HONORS PROGRAM

If you want to engage in rigorous classes and prepare for an honors program at a four-year school in Utah, apply for competitive admissions to the SLCC Honors Program at the beginning of your degree.



[slcc.edu/honors](https://slcc.edu/honors)



[slcchonors](#)

Major options are subject to change.  
Visit SLCC's online catalog for up-to-date information.



[slcc.edu/catalog](https://slcc.edu/catalog)







## SALT LAKE TECHNICAL COLLEGE (SLTECH)

At Salt Lake Tech, we focus on providing technical education and hands-on training that meets the demands of today's job market. With several campuses throughout the Salt Lake Valley and affordable tuition, we serve a diverse range of students with unique educational and career goals.

### CREDIT CERTIFICATE PROGRAMS

Technical Education programs are for-credit programs that lead to employment in high-demand, high-wage careers. They may also meet the requirements for an Associate's Degree.

### ENGLISH AS A SECOND LANGUAGE (ESL)

The mission of the English as a Second Language (ESL) program at Salt Lake Technical College is to empower students by improving their English language proficiency, to equip them with the essential skills to pursue technical education, enroll in academic programs, and integrate into the workforce. Classes are held in person. Some classes also require independent online study.

### APPRENTICESHIPS

While enrolled in an Apprenticeship program, apprentices will earn wages from their employers during business hours, gain on-the-job learning and job-related classroom instruction, work under a mentor in the work setting, and achieve nationally recognized credentials.

 [slcc.edu/sltech](https://slcc.edu/sltech)

## CAREER & TECHNICAL EDUCATION (CTE)

Great-paying, hands-on jobs require specific training and knowledge. A college degree from SLCC's CTE programs will open doors to careers in Nursing, Emergency Medical Technician (EMT), Automotive Technician, Film Production Technician, Geospatial Technology, and Culinary Arts, among others.

 [slcc.edu/cte](https://slcc.edu/cte)







## NOT-FOR-CREDIT PROGRAMS

Salt Lake Tech and Workforce Training & Education offers a wide variety of not-for-credit, short-term training programs designed to lead to entry-level employment, upskill workers in their current roles, and assist them in renewing industry licenses.

Programs are developed in collaboration with Utah industry partners, ensuring credentials are highly valued and aligned with the job market.

### Program Areas:

- Advanced Manufacturing
- Automotive
- Business
- Computer & Networking
- Electronics
- Energy
- Licensure & Renewal
- Media & Web
- Teacher Education

Salt Lake Tech has multiple funding sources to pay for part or all of your training program.

 [slcc.edu/workforce-training](https://slcc.edu/workforce-training)

## CUSTOM TRAINING SOLUTIONS

Custom Training Solutions provides learning resources for Utah businesses, non-profit organizations, and public agencies to train and retain employees for success. Whether it's technical skills or soft skills that are so important in creating a positive and productive culture, we are here to help close the skill gaps. As the Salt Lake County Custom Fit provider, Custom Training Solutions is here to help you pay for vital training to keep your business competitive.

 [slcc.edu/corporate](https://slcc.edu/corporate)

# CAMPUS LOCATIONS

1  
WWTE

## WESTPOINTE WORKFORCE EDUCATION CENTER

1060 North Flyer Way  
Salt Lake City, UT 84116  
801-957-2150

2  
AP

## INTERNATIONAL AVIATION EDUCATION CENTER

551 N 2200 West  
Salt Lake City, UT 84116  
801-957-2050

3  
SCC

## SOUTH CITY CAMPUS

1575 S State Street  
Salt Lake City, UT 84115  
801-957-3350

4  
WVC

## WEST VALLEY CENTER

3460 S 5600 West  
West Valley City, UT 84128  
801-957-2117

5  
TRC

## TAYLORSVILLE REDWOOD CAMPUS

4600 S Redwood Road  
Salt Lake City, UT 84123  
801-957-4073

6  
JC

## JORDAN CAMPUS

3491 W 9000 South  
West Jordan, UT 84088  
801-957-2600

7  
LHMC

## LARRY H. MILLER CAMPUS

9750 S 300 West  
Sandy, UT 84070  
801-957-5417

8  
HC

## HERRIMAN CAMPUS

14551 South Sentinel Ridge Blvd  
Herriman, UT 84096  
801-957-6625

## SLCC ONLINE

SLCC Online provides an innovative and flexible online learning experience.



[slcc.edu/online](https://slcc.edu/online)

## UTA TRANSIT PASS

SLCC provides free transit and paratransit passes to all active students, faculty, and staff. The pass is valid on UTA buses, TRAX, and FrontRunner.



[slcc.edu/onecard/utaedpass.aspx](https://slcc.edu/onecard/utaedpass.aspx)



AIRPORT

1

WWTE

2

AP



CAPITOL HILL

3

SCC

4

WVC

5

TRC

6

JC

7

LHMC

8

HC

View a 3D map  
of each campus







# EXPERIENCE YOUR LEARNING

## STEM PROJECTS AND RESEARCH

Students can look through the STEM Project and Research Catalog to participate in existing opportunities that go far beyond the lecture hall. Student work is presented annually at the Undergraduate Projects & Research Conference.

 [slcc.edu/stem/projects-research/catalog.aspx](https://slcc.edu/stem/projects-research/catalog.aspx)

## STEM LEARNING RESOURCES

Students in STEM classes can find free drop-in and online tutoring, workshops, research, and project opportunities, and textbook and scientific model checkout at all STEM Learning Centers.

 [slcc.edu/stem](https://slcc.edu/stem)

## CAMPUS INTERNSHIP PROGRAM

The Campus Internship Program provides SLCC students with the opportunity to obtain a paid internship on campus to develop skills, gain experience, create a network, and build on current and future educational and career goals.

 [slcc.edu/careerservices/Students/student-employment-pages/campus-internship-program.aspx](https://slcc.edu/careerservices/Students/student-employment-pages/campus-internship-program.aspx)

## LEARN AND SERVE

Get involved in issues you care about by engaging in your community! Through community engaged learning classes, you see firsthand how course content applies to the real world. Create a positive change while also earning academic credit!

 [slcc.edu/community-engaged-learning](https://slcc.edu/community-engaged-learning)

 [slccengagedlearning](#)

## STUDY AWAY

Study Abroad and Domestic Study are collectively known as Study Away and are linked to credit-bearing courses. Lose yourself in another part of the world or discover a new culture near you.

Travel to an international destination as a part of your academic journey. Examine global issues and gain experience with different cultures and countries.

 [slcc.edu/studyabroad](https://slcc.edu/studyabroad)

You can also immerse yourself in a place-based Domestic Study experience where you participate in academic study in a U.S. location.

 [slcc.edu/engaged-learning-office/domestic-study](https://slcc.edu/engaged-learning-office/domestic-study)

 [slccengagedlearning](#)

# ATHLETICS



## VOLLEYBALL

3rd Place SWAC | 3rd Place Region 18  
Overall Record 18-10



## BEACH VOLLEYBALL

Overall Record 2-2



## WOMEN'S SOCCER

SWAC Champions | Region 18 Champions  
3rd Place NJCAA National Tournament | Overall Record 18-3-1



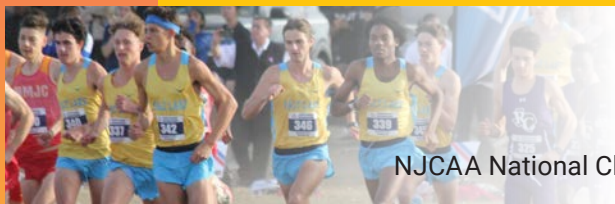
## MEN'S SOCCER

SWAC Champions | 2nd Place Region 18  
6th Place NJCAA National Tournament | Overall Record 16-2-2



## WOMEN'S CROSS COUNTRY

SWAC Champions | Region 18 Champions  
NJCAA National Champions 8K and Half Marathon



## MEN'S CROSS COUNTRY

SWAC Champions | Region 18 Champions  
NJCAA National Champions 8K | 2nd Place NJCAA Nationals Half Marathon

## TEAM TRYOUTS

Tryouts vary based on the team.  
Please contact the coach for  
additional information.



[slccbruins.com/sports/general](https://slccbruins.com/sports/general)



# 2025-2026



## WOMEN'S BASKETBALL

4th Place SWAC | Region 18 Champions  
18th Place NJCAA National | Overall Record 21-11



## MEN'S BASKETBALL

4th Place SWAC | 4th Place Region 18  
Overall Record 19-12



## BASEBALL

SWAC Champions | Region 18 Champions | West District Champions  
2025 NJCAA JUCO World Series Champions | Overall Record 48-11



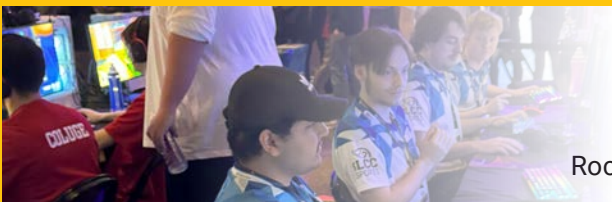
## SOFTBALL

2nd Place SWAC | 2nd Place Region 18  
Overall Record 35-12



## CHEER

2025 NJCAA Cheer Invitational – 4th Place



## ESPORTS

Hearthstone – NJCAA National Champions  
Rocket League- West Region Champions Overall Record 12-11



[slccbruins.com](https://slccbruins.com)



[slccbruins](https://www.instagram.com/slccbruins)





# STUDENT SUCCESS

## TRIO STUDENT SUPPORT SERVICES (SSS) & SCIENCE, TECHNOLOGY, ENGINEERING & MATH (STEM)

TRIO SSS & STEM provide community, support, and resources to first-generation and low-income students in the form of academic and financial planning, finding money for tuition, navigating the transfer process, and one-on-one and group peer tutoring.



## STUDENT ENGAGEMENT, EXPERIENCE, AND ACHIEVEMENT (SEEA)

SEEA strives to strengthen student growth by ensuring that they have the necessary tools to achieve goals, graduate with confidence, help navigate their educational journey at SLCC, and support engagement.



## DREAM CENTER

The Dream Center provides individualized advising and scholarship support to undocumented students (with and without DACA) and mixed-status families, including Temporary Protective Status (TSP) recipients, asylum seekers, international students, and children of immigrants.



## CAREER SERVICES

Trained career coaches help students create individualized life plans, explore majors, find jobs or internships, and practice networking and interviewing. Career Services encourages students to visit their offices early and often.



# STUDENT SUCCESS

## BRUIN PANTRY

We provide non-perishable, quality, and nutritious foods for current SLCC students, staff, and faculty. You can access our services at the Herriman, Jordan, South City, Taylorsville Redwood, and West Valley Center campuses by presenting your OneCard. Check the website for up-to-date hours.

 [slcc.edu/bruinpantry](https://slcc.edu/bruinpantry)

## BRUIN SCHOLARS

The Bruin Scholars program supports first-generation, undocumented, transitioning-out-of-foster care, and returning students, as well as any student who desires help navigating college. Our peer and staff mentors provide a wide range of guidance, including registration assistance.

 [slcc.edu/oss/student-success/bruin.aspx](https://slcc.edu/oss/student-success/bruin.aspx)

## ACCESSIBILITY & DISABILITY SERVICES (ADS)

The ADS makes all aspects of college inclusive and accessible to students who may need accommodations. Students should reach out for support from the ADS early and often.

 [slcc.edu/drc](https://slcc.edu/drc)  [slcc\\_ads](https://www.instagram.com/slcc_ads)

## VETERANS CENTER

SLCC Veterans Services provides hands-on assistance to you and your dependents, helping you obtain your VA educational benefits, use the GI Bill, and support you through graduation.

 [slcc.edu/veterans](https://slcc.edu/veterans)

"The SLCC community really feels like a family, and there are so many resources to support students in so many ways, it's unbelievable."

– Jessie Tembo, SLCC Student







# STUDENT RESOURCES

## CHILD CARE SERVICES

Student parents can find reliable, high-quality child care on the Taylorsville, South City, and Jordan campuses, often at little or no cost.

 [slcc.edu/childcare](https://slcc.edu/childcare)

## SLCC RECREATION

Student health is part of student success. On-campus recreation facilities and classes are free to all SLCC students with their OneCard.

 [slcc.edu/recreation](https://slcc.edu/recreation)

## STUDENT WRITING & READING CENTER

The SWRC helps students improve their writing and reading skills across subjects and in non-class writing, like resumes or scholarship applications. Free in-person and online consultations are available.

 [slcc.edu/swc](https://slcc.edu/swc)

 [slccswrc](https://www.instagram.com/slccswrc)

## CAMPUS BOOKSTORES

Textbooks, supplies, and a good dose of school spirit can be found at our Campus Bookstores.

 [bkstr.com/slccstore](https://bkstr.com/slccstore)

## CENTER FOR HEALTH & COUNSELING

A one-stop shop for all your health and wellness needs! The CHC offers quality services including mental health counseling, medical services, and massage therapy at affordable rates. Services are exclusive to SLCC students.

 [slcc.edu/chc](https://slcc.edu/chc)

 [slcc\\_chc](https://www.instagram.com/slcc_chc)

 [slccchc](https://www.facebook.com/slccchc)

## GENDER & SEXUALITY STUDENT RESOURCE CENTER (GSSRC)

We support all students through a lens of gender and sexuality, fostering an sense of belonging through celebration, advocacy, education, and community building. Whether you're navigating college life, exploring identity, or seeking connection, we're here for you. Visit us at South City Campus, room SCM 1-140, to learn more. To learn more, visit [slcc.edu/gssrc](https://slcc.edu/gssrc)

 [slcc.edu/gssrc](https://slcc.edu/gssrc)

 [slccgssrc](https://www.instagram.com/slccgssrc)

## LIBRARY SERVICES

Library services are available on four campuses and online and feature research materials in print and electronic formats, study spaces, and computer labs. Research assistance is offered in-person or remotely.

 [libguides.slcc.edu/home](https://libguides.slcc.edu/home)









# GET INVOLVED BUILD COMMUNITY

## THAYNE CENTER FOR STUDENT LIFE, LEADERSHIP & COMMUNITY ENGAGEMENT

SLCC's Thayne Center provides students with opportunities to have a voice, get involved, make connections, and expand your understanding of cultures. We are dedicated to empowering students to recognize that they have the knowledge and skills to impact positive change in their community. Come find your place at SLCC, attend student events, develop your leadership skills, engage with the community, and secure your basic needs.



[slcc.edu/thaynecenter](https://slcc.edu/thaynecenter)



[thaynecenter\\_slcc](https://www.instagram.com/thaynecenter_slcc)

### JOIN A CLUB

With over 60 clubs and organizations at SLCC, there is a group for everyone. If you can't find one you like, you can always start your own. Connect to what drives you—join a club!



[slcc.edu/thaynecenter/student-leadership/clubs.aspx](https://slcc.edu/thaynecenter/student-leadership/clubs.aspx)

### ENGAGE WITH YOUR COMMUNITY

Whether you are completing service hours for an engaged learning class, enacting social change, or have received work-study and choose to work with a community partner, you will be able to experience first-hand how in-classroom learning applies to the real world.



[slcc.campusgroups.com](https://slcc.campusgroups.com)

### BECOME A LEADER

Do you want to develop leadership skills? Join the SLCC Student Association to plan and market student activities, take part in leadership development, and advocate for your classmates.



[slcc.edu/thaynecenter/student-leadership](https://slcc.edu/thaynecenter/student-leadership)



[slccsa](https://www.instagram.com/slccsa)



"If you focus on your studies, you will go far, but if you decide to get involved in campus activities while taking your classes, that will carry you farther."

— Rosillah Nalule, SLCC Student

## CENTER FOR ARTS AND MEDIA

The state-of-the-industry Center for Arts and Media at South City Campus is an environment for sharing, creating, inspiring, and collaborating. Students can express themselves through engaging classes, performances, concerts, screenings, and more.



[slcc.edu/arts](https://slcc.edu/arts)

## THE GRAND THEATRE

Catch a show like *A Raisin in the Sun*, *In the Heights*, or *Into the Woods*, performed by professional and community actors in a historic theater. Students receive free admission with their OneCard.



[grandtheatrecompany.com](https://grandtheatrecompany.com)



[thegrandtheatre](https://www.instagram.com/thegrandtheatre)



[thegrandtheatrefans](https://www.facebook.com/thegrandtheatrefans)

## GEORGE S. AND DOLORES DORÉ ECCLES ART GALLERY

The "Eccles Gallery" and Edna Runswick Taylor Foyer exhibition spaces are dedicated to exploring visual art by student, community, and international artists.



[slcc.edu/exhibitions-collections](https://slcc.edu/exhibitions-collections)



[slcc\\_eccles\\_art\\_gallery](https://www.instagram.com/slcc_eccles_art_gallery)





## FINANCIAL AID

Take away the worry of funding your education at SLCC by applying for financial aid, which can include grants, loans, work-study, and scholarships. Get started by completing the Free Application for Federal Student Aid (FAFSA) online. The Office of Financial Aid provides FAFSA completion assistance appointments on our website.

Students are encouraged to submit the FAFSA by the SLCC Priority Deadlines:

- Fall Semester Priority – April 15
- Spring Semester Priority – October 1
- Summer Semester Priority – April 1

 [studentaid.gov](https://studentaid.gov)

 [slcc.edu/financialaid](https://slcc.edu/financialaid)

## SCHOLARSHIPS

SLCC has many scholarship opportunities for first-year and continuing students. Scholarships are a great way to help pay for school. There are a lot of different types of scholarships available to individuals planning to attend SLCC.

Scholarship applications will be reviewed continuously throughout the year; however, there are priority deadlines for each semester:

**Fall Semester:** April 15

**Spring Semester:** October 1

**Summer Semester:** April 1

 [slcc.edu/scholarships](https://slcc.edu/scholarships)

## SLCC PROMISE

SLCC Promise helps eligible students pay for their education by covering the cost of tuition and fees when Pell Grants fall short. SLCC Promise is intended to remove economic barriers and provide a pathway for SLCC students to complete their degrees.

 [slcc.edu/promise](https://slcc.edu/promise)

## OPEN SLCC

Provides students a cost-effective alternative to traditional textbooks. To date, the total estimated student cost savings is \$31 million with over 15,000 sections, 125 different OER courses offered, and 357,347 SLCC student enrollments.

 [slcc.edu/open](https://slcc.edu/open)



"One of the biggest reasons I dropped out was because I didn't think I could afford to finish my degree. But luckily, I was eligible for SLCC Promise and was closer to graduating than I had originally thought. This motivated me to finally finish what I started."

– Zachary McCray, SLCC Student

# TUITION & FEES

## TUITION & FEES BREAKDOWN

| Credit Hours |    | Resident Student<br>Tuition & Fees | Non-Resident Student<br>Tuition & Fees* | Apprenticeship<br>Tuition & Fees | Salt Lake Tech<br>Tuition & Fees |
|--------------|----|------------------------------------|---|----------------------------------|----------------------------------|
| 1            | \$ | 386.25                             | 1,239.50                                | 211.50                           | 99.00                            |
| 2            | \$ | 574.50                             | 1,820.25                                | 290.00                           | 198.00                           |
| 3            | \$ | 763.75                             | 2,402.00                                | 368.50                           | 297.00                           |
| 4            | \$ | 952.50                             | 2,983.25                                | 447.00                           | 396.00                           |
| 5            | \$ | 1,141.00                           | 3,564.25                                | 525.50                           | 495.00                           |
| 6            | \$ | 1,329.25                           | 4,145.00                                | 604.00                           | 594.00                           |
| 7            | \$ | 1,486.25                           | 4,694.50                                | 682.50                           | 693.00                           |
| 8            | \$ | 1,643.25                           | 5,244.00                                | 761.00                           | 792.00                           |
| 9            | \$ | 1,800.25                           | 5,793.50                                | 839.50                           | 891.00                           |
| 10           | \$ | 1,957.25                           | 6,343.00                                | 918.00                           | 990.00                           |
| 11           | \$ | 2,114.25                           | 6,892.50                                | 996.50                           | 1,089.00                         |
| 12-18        | \$ | 2,271.25                           | 7,442.00                                | 1,075.00                         | 1,188.00+                        |
| 19           | \$ | 2,428.25                           | 7,991.50                                | 1,153.50                         | 1,881.00                         |
| 20           | \$ | 2,585.25                           | 8,541.00                                | 1,232.00                         | 1,980.00                         |
| 21           | \$ | 2,742.25                           | 9,090.50                                | 1,310.50                         | 2,079.00                         |
| 22           | \$ | 2,889.25                           | 9,640.00                                | 1,389.00                         | 2,178.00                         |
| 23           | \$ | 3,056.25                           | 10,189.50                               | 1,467.50                         | 2,277.00                         |
| 24           | \$ | 3,213.25                           | 10,739.00                               | 1,546.00                         | 2,376.00                         |
| 25**         | \$ | 3,370.25                           | 11,288.50                               | 1,624.50                         | 2,475.00                         |

 [slcc.edu/student/financial/tuition-fees.aspx](https://slcc.edu/student/financial/tuition-fees.aspx)

\* Non-residents pay resident tuition for summer semester.

\*\* Amount for each additional credit hour  
Resident: \$157.00  
Non-resident: \$549.50  
SLTC: \$99  
Apprenticeship: \$74.50

## RESIDENCY

Students are classified either as resident or non-resident at the time the application is received. If you have questions regarding your residency status, contact the admissions office.

 [slcc.edu/admissions/residency.aspx](https://slcc.edu/admissions/residency.aspx)



# QUICK FACTS

130

CERTIFICATES AND DEGREES  
AVAILABLE

AVERAGE  
CLASS SIZE

18

9

AREAS OF STUDY

36,898

STUDENTS WHO TAKE CLASSES  
FOR COLLEGE CREDIT EACH YEAR

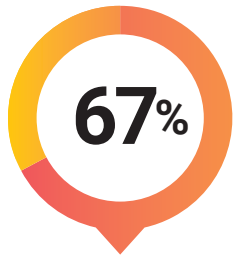
SLCC HAS THE

**MOST DIVERSE**

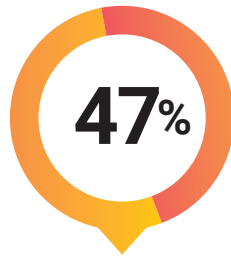
STUDENT BODY OF ANY HIGHER ED INSTITUTION IN THE STATE



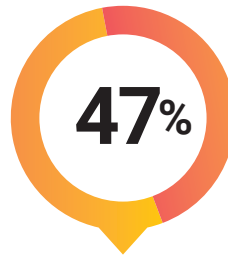




SLCC STUDENTS  
WORK WHILE IN  
SCHOOL



SLCC STUDENTS  
ARE THE FIRST IN  
THEIR FAMILIES  
TO ATTEND  
COLLEGE



SLCC STUDENTS  
OFFERED  
FINANCIAL AID

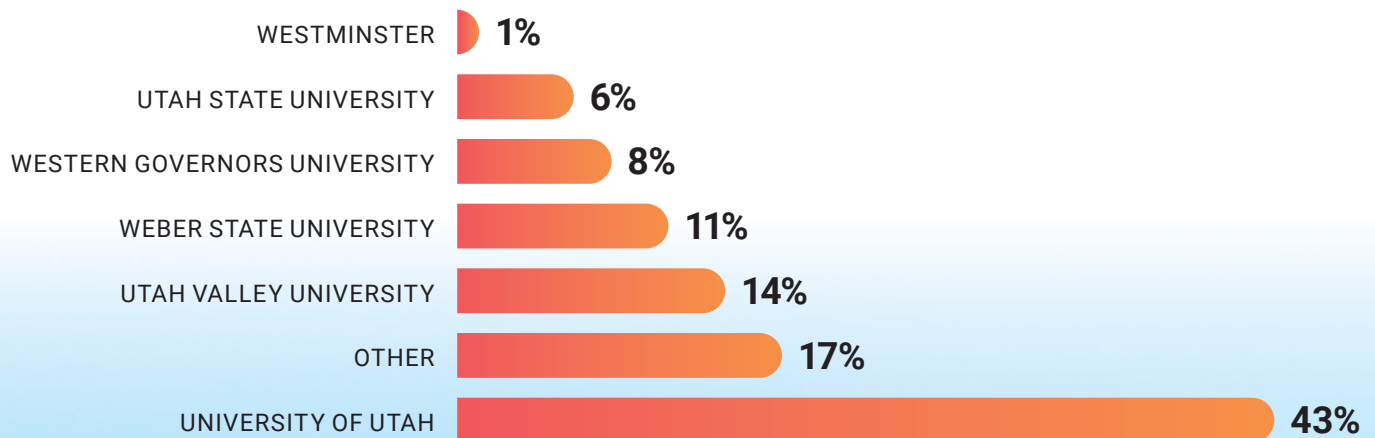


SLCC STUDENTS  
TAKE AT LEAST  
ONE ONLINE  
COURSE A  
SEMESTER



SLCC STUDENTS  
WHO GRADUATE  
WITH AN AA, AS,  
OR APE TRANSFER  
TO A FOUR-YEAR  
INSTITUTION

## TRANSFER RATES FOR SLCC STUDENTS





4600 S Redwood Road  
Salt Lake City, UT 84123  
801-957-4073  
slcc.edu



REV 07-31-2025

It is the policy of Salt Lake Community College not to discriminate on the basis of race, color, national origin, gender, age, sexual orientation, gender identity, disability, religion, or any other status protected under applicable federal, state, or local law.