

Impact Summary

Service-Learning

Service-Learning supports the achievement of course learning outcomes through experiential service opportunities with community partners. Students gain knowledge about important social issues and critically reflect on their impact on society, individuals, and academic disciplines.

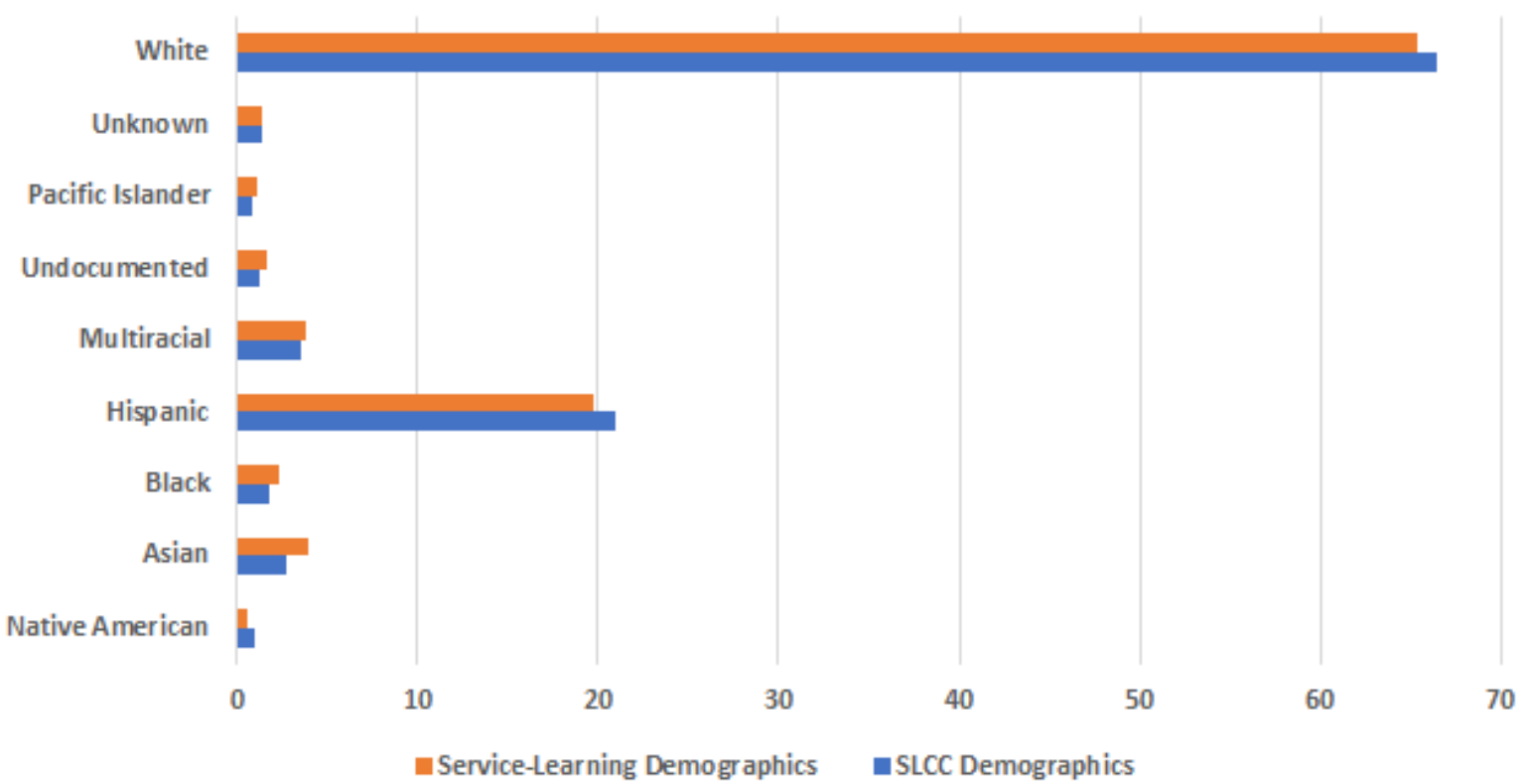
4,682
Students

265
Course
Sections

68
SL Faculty

\$2,500
Funding
Provided

Racial Demographic of Service-Learning Students in Comparison to Salt Lake Community College Population



Engaged Departments

Engaged department designation takes course designation to the next level by helping the department as a whole increase their civic engagement efforts.



DEPARTMENT OF
ENGLISH,
LINGUISTICS &
WRITING STUDIES
was recognized as an
**Engaged
Department**

**TOTAL
FUNDING
PROVIDED**
\$3,150

Civic Faculty Fellows

Faculty fellows is a distinction for civic-minded faculty members that strive to promote high-impact practices (such as service-learning), boost engaged department efforts, and increase community engagement efforts across the college.

1 FACULTY FELLOWS

Daniel Baird
English, Linguistics & Writing Studies

TOTAL FUNDING PROVIDED
\$ 2,000

Service-Learning Student Project Fund

The Service-Learning Student Project Fund supports students enrolled in service-learning classes and select other programs. Students may request funding up to \$500 to offset costs directly related to their service-learning projects!

15 Approved Service-Learning Student Project Fund Proposals

\$ 3,224
In Funding for Service-Learning Projects

Study Abroad

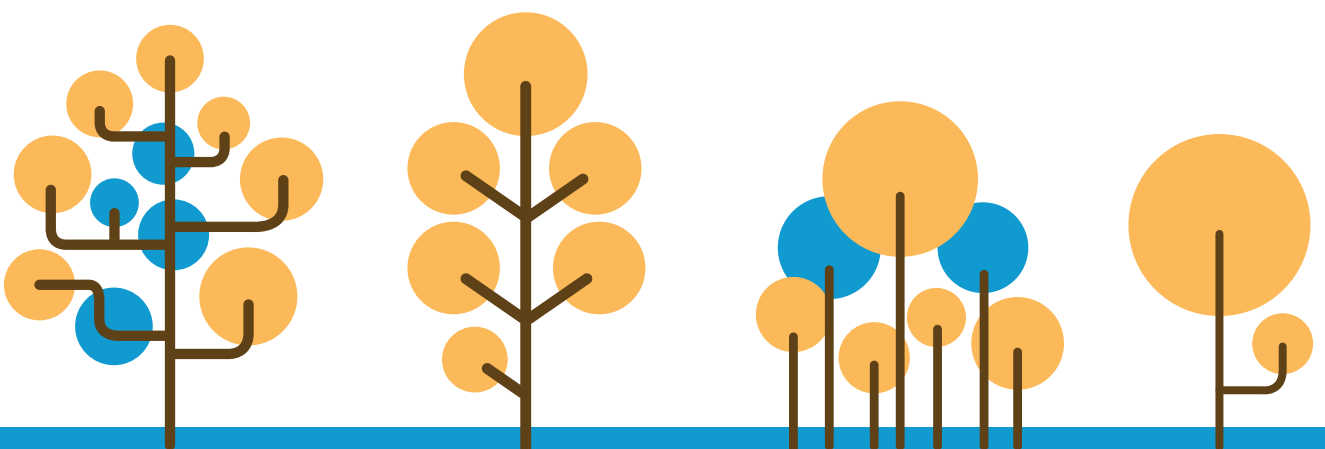
Study Abroad integrates classroom and community-based experiential learning, where students gain an understanding of the diverse global environments and cultures around us. Students explore various cultures, human differences, languages, and natural environments while also learning about issues of racial, ethnic, and gender equity and human rights.



Scholarship Funding Awarded

\$ 23,350

*The spring and summer 2020 Study Abroad Programs were interrupted due to COVID-19. The numbers reflect data prior to program cancellation.



Engaged Learning Office:
<http://www.slcc.edu/engaged-learning-office/index.aspx>

