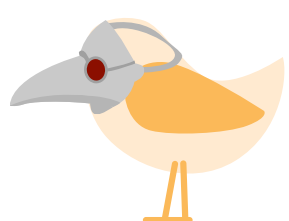


Impact Summary

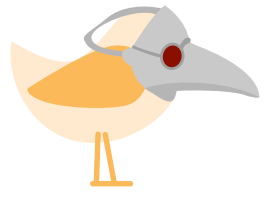


Service-Learning

Service-Learning supports the achievement of course learning outcomes through experiential service opportunities with community partners. Students gain knowledge about important social issues and critically reflect on their impact on society, individuals, and academic disciplines.

2,627
Students

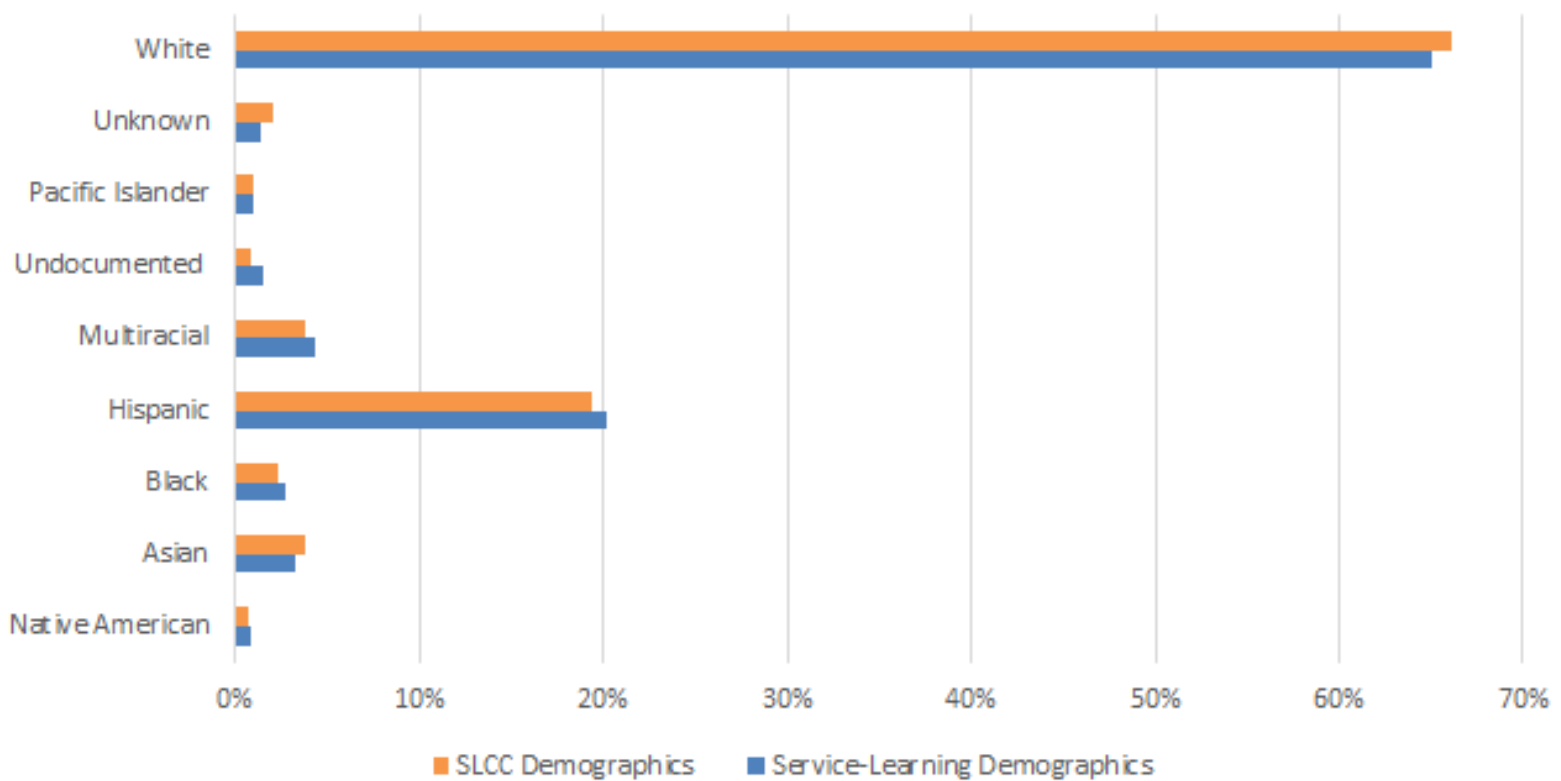
215
Course Sections



48
SL Faculty

\$1,683
Funding Provided

Racial Demographic of Service-Learning Students in Comparison to Salt Lake Community College (SLCC) Population



Service-Learning Student Project Fund

The Service-Learning Student Project Fund supports students enrolled in service-learning classes and select other programs. Students may request funding up to \$500 to offset costs directly related to their service-learning projects!

17 Approved Service-Learning Student Project Fund Proposals

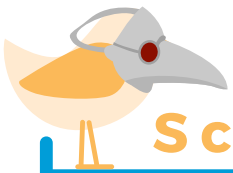
\$5,222
In Funding for Service-Learning Projects

Study Abroad

Study Abroad integrates classroom and community-based experiential learning, where students gain an understanding of the diverse global environments and cultures around us. Students explore various cultures, human differences, languages, and natural environments while also learning about issues of racial, ethnic, and gender equity and human rights.

16 STUDENTS
Japanese Language Studies
JAPAN

COSTA RICA
This program was proposed but cancelled before recruitment began due to COVID-19.



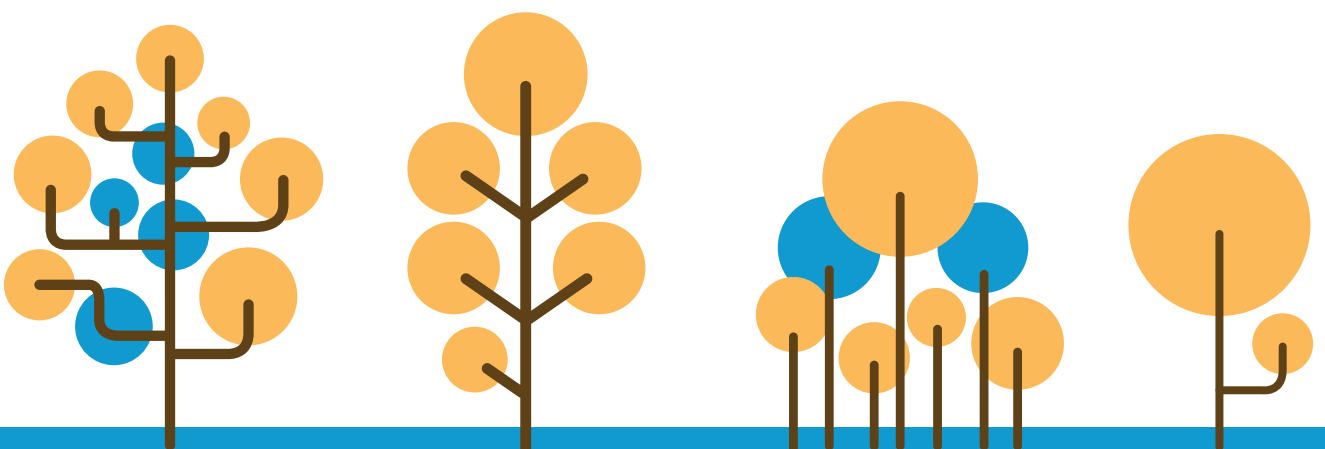
Scholarship Funding Awarded

\$12,250

*The numbers for study abroad reflect data prior to program cancellation due to COVID-19.

COVID-19 Impact

The numbers and impact for Engaged Learning programs decreased significantly during the 2020-2021 academic year because of COVID-19. In spite of this we are happy to report that our office was able to help support more service-learning student project fund proposals and our service-learning demographics remain representative of the SLCC student population. Our little masked bird represents the reduction of program services and challenges presented due to the pandemic.



Engaged Learning Office:
<http://www.slcc.edu/engaged-learning-office/index.aspx>

