

The following processes, including multi-factor authentication (MFA), are essential to protect student information from the rampant identity theft and fraud affecting not just SLCC, but the entire country. Although these measures can be frustrating and require technological skills, they are essential for protecting sensitive data. We share your frustration with the complexity of these processes, but unfortunately due to the widespread fraud, they have become necessary to protect your information. We are dedicated to employing best practices to balance data security with student access. The risks of not protecting student information far outweigh the additional steps needed to secure it.

# Part 1



MySLCC

Canvas

Faculty

Staff

CONTACT SLCC



APPLY NOW

AHORA



GIVE NOW

Visit SLCC.edu

Select the "MySLCC" field, then select the second  
"MySLCC" field that drops down beneath it



# MySLCC

Click on the "Login" field

MySLCC is your gateway to SLCC online services, including registration, financial aid, employee services and much more.

Login

Enter your BruinID  
@ slcc.edu to login



## Sign in

dkearl2@slcc.edu

[Can't access your account?](#)

Back

Next

**Student Sign-on:** *username@bruinmail.slcc.edu*

**Staff Sign-on:** *username@slcc.edu*

If you don't know your username, use our [retrieval tool](#). Your password must meet SLCC's [password complexity requirements](#). For assistance resetting your password, please contact [SLCC Tech Support](#).



← dkearl2@slcc.edu

**Enter password**

Password

[Forgot my password](#)

Sign in

Click on the "Forgot my password" field

Student Sign-on: *username@bruinmail.slcc.edu*





Get ~~back~~ into your account

Who are you?

To recover your account, begin by entering your email or username and the characters in the picture or audio below.

Email or Username: \*

dkearl2@slcc.edu

Example: user@contoso.onmicrosoft.com or user@contoso.com



Enter the characters in the picture or the words in the audio. \*

**Enter the email you submitted  
with your CE application and  
the CAPTCHA and click next**

Next

Cancel



## Get back into your account

verification step 1 > choose a new password

If you don't see this screen,  
you need to call SLCC's help  
desk (801-957-5555) to  
define an alternate email address.

Please choose the contact method we should use for verification:

☒ Email my alternate email

☐ Enter a code from my  
authenticator app

You will receive an email containing a verification code at your alternate email  
address (da\*\*\*\*\*@gmail.com).

Email

Once you have an alternate email,  
navigate back to this screen.



✍ Compose

📁 **Inbox** 29

🕒 Snoozed

📂 Important

▶ Sent

✉ All Mail

⚠ **Spam** 13

🗑 Trash

▶ 📁 **Categories**

▼ More

🏷 **Labels** +

📁 Storage

▼ More



1

## Salt Lake Community College account email verification code 📁 Inbox x



**Microsoft on behalf of Salt Lake Community College** <msonlineserviceteam@microsoftonline.com>  
to me ▼

4:25 PM (0 min)

### Verify your email address

Thanks for verifying your [dkearl2@slcc.edu](mailto:dkearl2@slcc.edu) account!

**Your code is: 341226**

➡ **Copy the code**

Sincerely,  
Salt Lake Community College

This message was sent from an unmonitored email address.  
Please do not reply to this message.





## Get back into your account

**verification step 1** > choose a new password

Please choose the contact method we should use for verification:

☒ Email my alternate email

☐ Text my mobile phone

☐ Call my mobile phone

☐ Enter a code from my authenticator app

We've sent an email message containing a verification code to your inbox.

341226

Next

Are you having a problem?

**Enter the code, click "Next" to continue**

[Cancel](#)



## Get back into your account

verification step 1 ✓ > **choose a new password**

\* Enter new password:

\* Confirm new password:

Finish

Cancel

**Choose a password.**  
I recommend typing it  
out somewhere you  
can see it and pasting  
it into these fields.



Get back into your account

✓ Your password has been reset

To sign in with your new password, [click here.](#)

**Continue**



## Sign in

dkearl2@slcc.edu

[Can't access your account?](#)

Back

Next

**Student Sign-on:** *username@bruinmail.slcc.edu*

**Staff Sign-on:** *username@slcc.edu*

If you don't know your username, use our [retrieval tool](#). Your password must meet SLCC's [password complexity requirements](#). For assistance resetting your password, please contact [SLCC Tech Support](#).

Re-enter your login information



← dkearl2@slcc.edu

**Enter password**

.....|

[Forgot my password](#)

**Enter your new password**

Sign in





dkearl2@slcc.edu

## Approve sign in request



Open your Authenticator app, and enter the number shown to sign in.

36

No numbers in your app? Make sure to upgrade to the latest version.

[More information](#)

Cancel

**Student Sign-on:** [username@bruinmail.slcc.edu](#)

**Staff Sign-on:** [username@slcc.edu](#)

If you don't know your username, use our [retrieval tool](#). Your password must meet SLCC's [password complexity requirements](#). For assistance resetting your password, please contact [SLCC Tech Support](#).

You will be prompted to download Microsoft's Authenticator app

Check out part 2 for instructions

# Part 2

If you haven't already, you  
might call SLCC's help desk  
(801-957-5555) for help.



MySLCC

Canvas

Faculty

Staff

ACT SLCC



APPLY NOW

DENTS

CURREN

AHORA

Visit SLCC.edu. Click on the field labeled "MySLCC" and then click on the second "MySLCC" field that drops down beneath it.



Click on the field labeled "Login" to continue

MySLCC

MySLCC is your gateway to SLCC online services, including registration, financial aid, employee services and much more.

Login



Sign in

dkearl2@slcc.edu

[Can't access your account?](#)

Back

Next

**Student Sign-on:** `username@bruinmail.slcc.edu`

**Staff Sign-on:** `username@slcc.edu`

If you don't know your username, use our [retrieval tool](#). Your password must meet SLCC's [password](#)

Enter your SLCC login information





← dkearl2@slcc.edu

**Enter password**

.....

[Forgot my password](#)

Sign in

**Enter your password**



dkearl2@slcc.edu

## More information required

Your organization needs more information to keep  
your account secure

[Use a different account](#)

[Learn more](#)

You'll be prompted to  
provide "more information"

Click the field labeled "Next" to continue

[Next](#)

## Keep your account secure

Your organization requires you to set up the following methods of proving who you are.

### Microsoft Authenticator



Start by getting the app

On your phone, install the Microsoft Authenticator app. [Download now](#)

After you install the Microsoft Authenticator app on your device, choose "Next".

Next



[I want to set up a different method](#)

**You'll be prompted to use your phone to download the Microsoft Authenticator app.**

**Click "Next" to continue.**

## Keep your account secure

Your organization requires you to set up the following methods of proving who you are.

### Microsoft Authenticator



#### Set up your account

If prompted, allow notifications. Then add an account, and select "Work or school".

**Switch back to your web browser  
and click on the field labeled "Next"**

Back

Next

# Keep your account secure

Your organization requires you to set up the following methods of proving who you are.

## Microsoft Authenticator

### Scan the QR code

Use the Microsoft Authenticator app to scan the QR code. This will connect the Microsoft Authenticator app with your account.

After you scan the QR code, choose "Next".



Can't scan image?

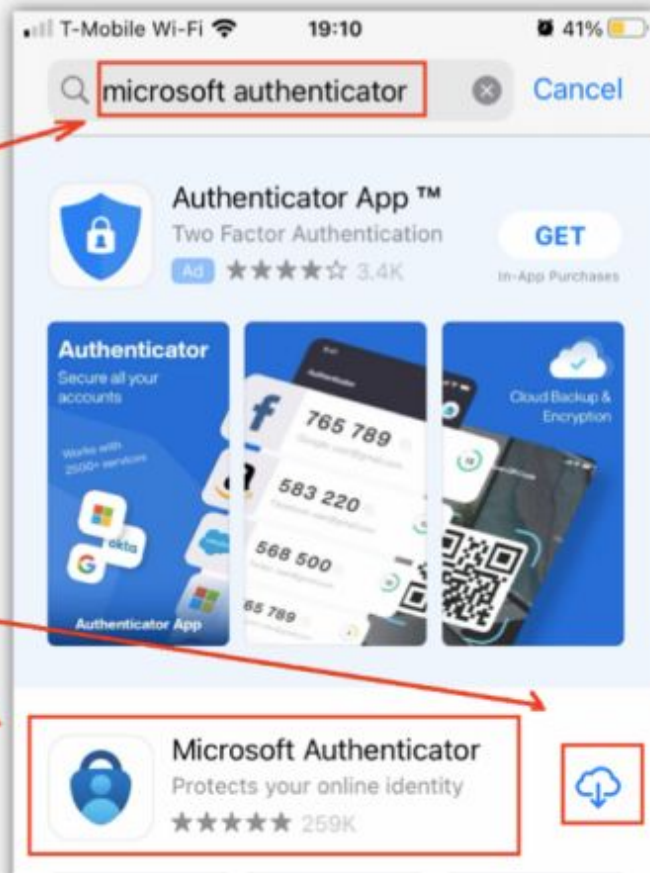
**Pause and switch  
to your phone**

Back

Next

Search for  
"Microsoft Authenticator"

Download this app







### Microsoft respects your privacy

We collect required diagnostic data to keep the app secure and updated. This does not include any personal data.

**Click "Accept" to continue.**



Accept



## Help us improve Microsoft Authenticator

By allowing us to collect additional non-personal data, you can help us improve the app.

You can turn this on or off at any time in the Settings page

**Click "Continue"**



Help improve the app by sharing your app usage data

Continue

[Microsoft Privacy Statement](#)

Click on this "+" icon





## Add account

WHAT KIND OF ACCOUNT ARE YOU ADDING?



Personal account



Work or school account



Other (Google, Facebook, etc.)



Click on "Work or school account"



## Add account

WHAT KIND OF ACCOUNT ARE YOU ADDING?



Personal account



Work or school account



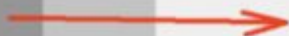
Add work or school account

Sign in

Scan QR code

Cancel

Click on "Sign in"



Cancel



**Sign in**

dkearl2@slcc.edu

[Can't access your account?](#)

**Enter your SLCC BruinID credentials**

Next



Cancel



← dkearl2@slcc.edu

**Enter password**

.....

[Forgot my password](#)

**Enter your password**

Sign in



## Add account

WHAT KIND OF ACCOUNT ARE YOU ADDING?



Personal account



Work or school account



**"Authenticator" Would Like to  
Access the Camera**

May be needed to scan QR code to  
add a new account

Don't Allow

OK

**Allow Authenticator to use your camera**

# Keep your account secure

Your organization requires you to set up the following methods of proving who you are.

## Microsoft Authenticator

### Scan the QR code

Use the Microsoft Authenticator app to scan the QR code. This will connect the Microsoft Authenticator app with your account.

After you scan the QR code, choose "Next".



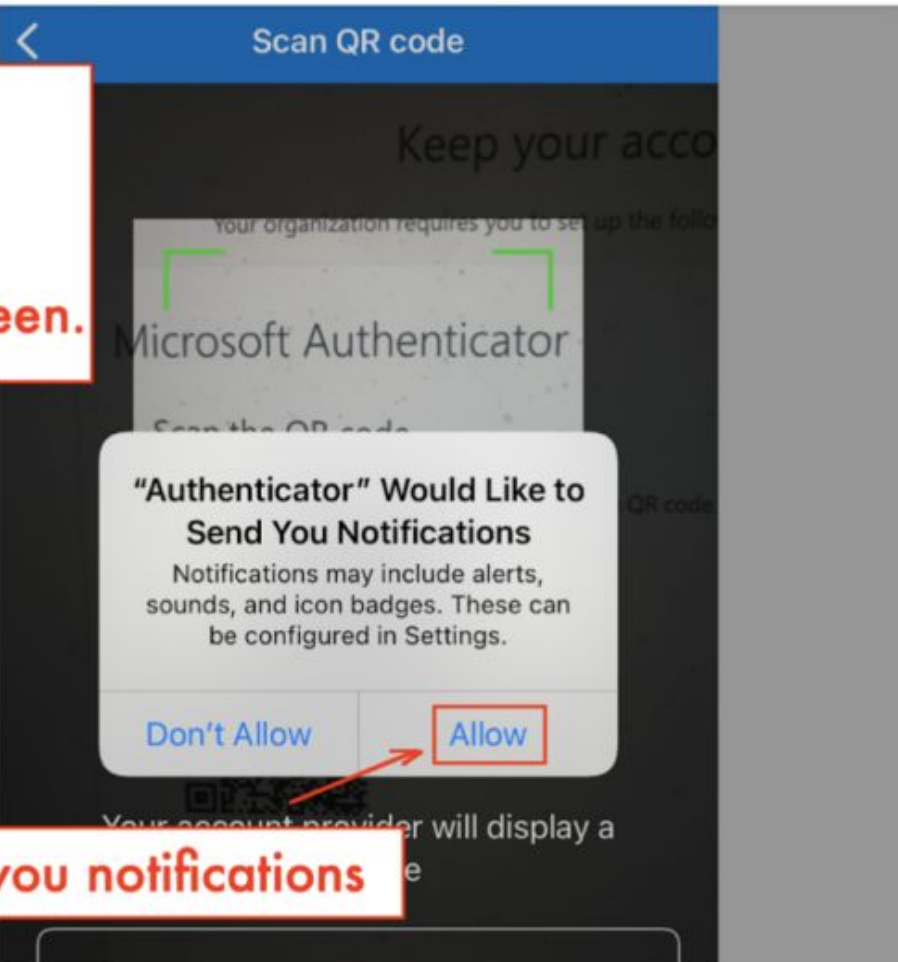
Can't scan image?

**Use your phone's camera to scan this QR code**

Back

Next

Your phone's camera will scan the QR code almost as soon as you direct it towards your computer screen.



Allow Authenticator to send you notifications

## Keep your account secure

Your organization requires you to set up the following methods of proving who you are.

### Microsoft Authenticator



Let's try it out

Approve the notification we're sending to your app by entering the number shown below.

**54**

Back

Next

**Switch back to your browser.  
SLCC will generate a random number.**

Are you trying to sign in?

Salt Lake Community College  
dkearl2@slcc.edu

Enter the number shown to sign in.

54

No, it's not me

Yes

Click "Yes" to continue

Enter the number in this field on your phone

Update security info

1

2

ABC

3

DEF

4

GHI

5

JKL

6

MNO

7

Q

R

## Keep your account secure

Your organization requires you to set up the following methods of proving who you are.

### Microsoft Authenticator



✓ Notification approved

**Switch back to your browser - click "Next" to continue**

Back

Next





dkeari2@slcc.edu

## Verify your identity

Your organization requires additional sign in methods to access this resource.

Sorry, we're having trouble verifying your account.  
Please try again. [View details](#)



Approve a request on my Microsoft Authenticator app

[More information](#)

Your browser will prompt you to test authentication again.

Click on this field



dkearl2@slcc.edu

## Approve sign in request



Open your Authenticator app, and enter the number shown to sign in.

**Enter this number**



17

No numbers in your app? Make sure to upgrade to the latest version.

[More information](#)

Cancel



dkearl2@slcc.edu

## Stay signed in?

Do this to reduce the number of times you are asked to sign in.

☐ Don't show this again

No

Yes

Click on "Yes" to login

Don't miss Bruin Bash 2023, happening August 25th starting at 5pm 'til midnight at Redwood Campus!

1 of 1

[Bruin Bash 2023](#)

You are now logged into SLCC.edu - you'll need to use the Authenticator from now on.

## Payments & Refunds

[SLCCPay+ Login](#)

Pay your tuition online, enroll in a payment plan, view eBills, and set up an eRefund account on SLCCPay+

### For more information

[Tuition Payment Plans Tutorial](#)

[Refund Information](#)

[Tuition & Fee Information](#)

[1098-T Tax Statement Information](#)

## Employee Training

[Register for Training \(Non-Required Training\)](#)

[Required Training Website](#)

[Required Training Portal Login](#)

[Employee Training Transcripts Supervisor Report](#)

[LinkedIn Learning](#)

[Information Technology \(OIT\) Training](#)

[Security Awareness Training](#)

## The New MySLCC!

MySLCC Experience 2023



Use this Sheets' guide to check your SLCC email:

[https://docs.google.com/presentation/d/1BKyrdrhM2GAnL7T3qWiDfMTEVa5sGvzo-rq1upgrM2Y/edit?usp=drive link](https://docs.google.com/presentation/d/1BKyrdrhM2GAnL7T3qWiDfMTEVa5sGvzo-rq1upgrM2Y/edit?usp=drive_link)

or use this video guide to check your SLCC email:

[https://drive.google.com/file/d/1nJeCJ8mPNFx7bspdMbcU\\_FqjS-7SxGiM/view?usp=drive link](https://drive.google.com/file/d/1nJeCJ8mPNFx7bspdMbcU_FqjS-7SxGiM/view?usp=drive_link)

You'll find an invitation to join a Canvas course hosted on SLCC's network called "New CE Instructor Training Course." Please join it.