

CRIME AWARENESS AND ANNUAL SECURITY REPORT



SLCC

PUBLIC SAFETY

POLICE

A Report to Students, Faculty and
Staff from Salt Lake Community
College Department of Public Safety

Through 2023



To the Salt Lake Community College Community:

On behalf of the Salt Lake Community College Department of Public Safety, I am pleased to welcome you to our community. It is our goal to do everything possible to maintain an environment where everyone can feel safe to visit, learn, and work. One way to create such an environment is to inform you about issues, interests, and policies regarding your safety and security and the services that we provide. I hope this report will be helpful in this regard.

The second way is to form a partnership between you and the officers and employees who serve you. To achieve this objective, the campus community must become involved in fighting crime. Working together, we can create the type of community we can all feel good about. We urge you to promptly report any criminal or suspicious activity observed on any Salt Lake Community College Campus. Contact numbers are provided in this report.

The Jeanne Clery Disclosure of Campus Security Policy and Campus Crime Statistics Act, commonly referred to as the Clery Act, requires higher education institutions to collect, report, and disseminate crime data to the campus community and U.S. Department of Education; to provide timely warnings of reported crimes that represent a threat to the safety of students or employees; and to make public their campus security policies. In compliance with this legislation, SLCC's Department of Public Safety works closely with the College administration to disseminate public safety alerts to faculty, staff, and students, produces an annual security report, and maintains a log of reported criminal incidents.

In compliance with Utah law (53B-28-301 – Campus Safety Amendments), the SLCC Annual Security Report provides information on current crime statistics, campus safety plan, campus safety curriculum, and other public safety related information. Please take a moment to review the rest of this report for information on some of the safety programs offered by the College and tips on staying safe.

Please enjoy your campus experience and call on us if we may be of service. Please don't hesitate to contact me, or any of the law enforcement officials serving Salt Lake Community College.

Sincerely,

Shane Crabtree
801-957-4571
Associate Vice President of Public Safety
Salt Lake Community College

TABLE OF CONTENTS

Contents

Policy of Preparing the Annual Security Report and Disclosure of Crime Statistics	5
Notification of Annual Security Report.....	5
SLCC Campus Law Enforcement Overview.....	6
Campus Safety Officers.....	7
Reporting a Crime	7
Daily Crime Log	9
Online Reporting Form	9
Timely Warning Policy and Procedure	10
Emergency Notification and Evacuation.....	11
Campus Facilities Security and Access	16
Additional Crime Prevention and Safety Awareness Measures	16
Behavioral Intervention Team (BIT).....	20
Alcohol, Tobacco, and Illegal Drugs.....	20
Sexual Assault, Dating/Domestic Violence, and Stalking	21
Procedures for Reporting Sexual Assault, Dating Violence, Domestic Violence, and Stalking	21
Definitions of Clery Act Locations.....	29
Definitions of Clery Act Offenses.....	30
Crime Statistics	36
ON-CAMPUS SERVICES RELATING TO SECURITY AND SAFETY.....	61
APPENDIX A: ONLINE REPORTING FORM	62



Policy of Preparing the Annual Security Report and Disclosure of Crime Statistics

The safety and well-being of students, visitors, and employees are high priorities at Salt Lake Community College (SLCC). While the campuses and centers of the College are relatively safe places, they are subject to many of the same problems experienced in the communities where they are located. The full support and cooperation of the entire College community are required to ensure the continued ability to work and pursue knowledge in a safe and secure environment. We encourage you to carefully read and use the following safety and security information to help make the campus a safe place for you and others.

This annual security report is designed to comply with the Campus Security Act of 1990 as implemented under regulations found in 34 CFR 668.46. It will be updated annually

to ensure accurate and current information is provided to all students, employees, and applicants for enrollment or employment at Salt Lake Community College. This report includes information about campus law enforcement, reporting of criminal activity, crime awareness and prevention, and campus crime statistics.

Notification of Annual Security Report

Each year, an e-mail notification is sent to all current SLCC students, faculty, and staff providing the website to access this report. Upon request, prospective students and employees may obtain a written paper copy of the report at the SLCC Department of Public Safety located on the Taylorsville Redwood Campus, Gunderson Facilities Services Building, 4365 South 2200 West, Salt Lake City, UT 84130; or by calling (801) 957-3800; or on the web: <http://www.slcc.edu/police/clery.aspx>

SLCC Campus Law Enforcement Overview

Salt Lake Community College provides important public safety services to a large and diverse campus community consisting of approximately 48,000 students and approximately 4,000 supporting faculty/staff. This is accomplished through 24-hour a day, 7 days a week police protection.

In May 2003, the College Board of Trustees and College President elected to contract with the Utah State Department of Public Safety (DPS) for law enforcement services on the Taylorsville Redwood, Jordan, Herriman, and South City campuses of the College. The effective date of this contract was July 1, 2003. Police services to the other campuses and centers are provided by the police departments of the cities in which they are located. The campuses, centers, and their respective departments contact numbers are provided in this report.

Utah DPS is a full-service agency of the state of Utah and provides police services on a state-wide basis. DPS provides 24/7 coverage on Taylorsville Redwood, South City, Herriman, and Jordan campuses utilizing uniformed state troopers and investigators. They maintain offices on each campus. You will find DPS police officers on these campuses, in automobiles, on bicycles, and walking on patrol 24 hours a day, 7 days a week.

The Miller, Library Square, West Valley, West Pointe, and Airport campus have contracted with Sandy City, West Valley City, and Salt Lake City Police Departments respectively to provide officers on site during specific hours. Officers from the various departments serving the College will frequently be seen on the campuses and centers.

The police officers serving the Salt Lake Community College campuses receive their police authority via the provisions of Utah Code, Title 53, Chapter 13, Section 103.

Any person who is a victim of a crime is encouraged to immediately notify the police. If a person is the victim of a crime or is aware of a crime and does not wish to contact the police, the person may report the incident to one or all of the following agencies:

Dean of Students

801-957-4776

Vice President for Student Affairs

801-957-4284

Risk Administration

801-957-4041

Director, Equal Opportunity (EO) and Title IX

801-957-4561

**Rape Recovery Center
(not affiliated with SLCC)**

801-467-7273

If the victim of a misdemeanor crime does not want police action taken, the crime is generally not prosecuted. The information will be given to the police for statistical purposes only. Felony offenses must be reported for investigation.

SafeUT App

The SafeUT app is a vital resource for students, parents, and educators, providing immediate access to licensed mental health professionals at any time. Whether facing a crisis or simply needing to talk, SafeUT offers real-time, confidential support via phone or chat—completely free of charge. Download the SafeUT app to access the chat feature, or for immediate assistance, call 833-372-3388.

Campus Safety Officers

The College utilizes Campus Safety Officers (CSOs) to patrol the campuses of Taylorsville Redwood, South City, Jordan, Miller, Herriman, Library Square, and West Valley between the hours of 5:00 p.m. and 2:00 a.m. The officers assure the security of buildings, equipment, and mitigation of physical hazards. CSOs are uniformed but are not sworn peace officers. Their presence greatly enhances the safety of the College community on these campuses.

Reporting a Crime

Students and others who become aware of criminal actions or other emergencies anywhere on campus should report these to the Salt Lake Community College Department of Public Safety by dialing 911. Individuals may also use any emergency phone, located in main thoroughfares of all campus buildings. However, if you are a victim of a crime that occurs off-campus and need help identifying the appropriate law enforcement agency for your jurisdiction, please contact 801-957-3800.

Incidents reported to SLCC DPS, to Utah Highway Patrol (UHP), or to the local municipalities in which the campus is located will be investigated for the purpose of reducing crime, improving safety, making disciplinary referrals, and imposing criminal sanctions as appropriate. We cannot overemphasize the importance of prompt and accurate reporting of crime. If a crime is not reported promptly, evidence can be destroyed or the potential to apprehend a suspect is lost. If you witness a crime or emergency, promptly report it to the SLCC DPS and be prepared to answer questions as accurately as you can. The subsequent investigation can only be as thorough as the information received. If you are the victim of a crime, or you have seen or received information of criminal activity or other emergency, please contact the appropriate authority immediately.

Additionally, incidents reported to the SLCC DPS or to the local municipalities on other campuses will be included in the statistical report contained in the Annual Security Report (ASR, Clery Report) prepared annually by the College.

Under very limited circumstances, the SLCC DPS or contracted law enforcement agencies may remove reports of crimes that have been deemed “unfounded” (determined by a sworn or commissioned law enforcement officer to be false or baseless). SLCC will still report and disclose all crimes that are “unfounded” in the Annual Security Report.



The following is a list of all emergency and non-emergency contact information for SLCC Department of Public Safety and other contracted law enforcement agencies:

POLICE DEPARTMENT	CONTACT NUMBERS	
REDWOOD CAMPUS SOUTH CITY CAMPUS JORDAN CAMPUS HERRIMAN CAMPUS		
Utah DPS (Highway Patrol) 4501 South 2700 West Salt Lake City, Utah 84119	Emergency Calls Non-Emergency Administrative Calls Campus Office Animal Control (RWD) Animal Control (South) Animal Control (Jordan)	911 801-957-3800 801-965-4461 801-957-4270 801-269-7499 801-264-2243 801-840-4000
MILLER CAMPUS		
Sandy City Police Department 10000 South Centennial Parkway Sandy, Utah 84070	Emergency Calls Non-emergency Calls Administrative Calls Investigation Follow-up Animal Control Calls	911 801-799-3000 801-568-7200 801-568-7200 801-352-4450
LIBRARY SQUARE		
Salt Lake City Police Department 475 South 300 East Salt Lake City, Utah 84111	Emergency Calls Non-emergency Calls Administrative Calls Investigation Follow-up Animal Control Calls	911 801-799-3000 801-799-3800 801-799-3720 801-264-2243
AIRPORT CENTER		
Salt Lake City Police Department 475 South 300 East Salt Lake City, Utah 84111	Emergency Calls Non-emergency Calls Administrative Calls Investigation Follow-up Animal Control Calls	911 801-799-3000 801-799-3800 801-799-3720 801-264-2243
WESTPOINTE		
Salt Lake City Police Department 475 South 300 East Salt Lake City, Utah 84111	Emergency Calls Non-emergency Calls Administrative Calls Investigation Follow-up Animal Control Calls	911 801-799-3000 801-799-3800 801-799-3720 801-264-2243
WEST VALLEY		
West Valley City Police Department 3575 South Market Street West Valley City, Utah 84119	Emergency Calls Non-emergency Calls Investigation Follow-up Animal Control Calls	911 801-840-4000 801-963-3300 801-963-5800



Daily Crime Log

The SLCC Department of Public Safety compiles a Daily Crime Log that is available to the media, the public, and various campus offices upon request. This summary identifies the date the crime was reported, the date and time the crime occurred, the nature of the crime, the general location of the crime, and the disposition of the complaint, if known. If you would like to obtain a copy of the Crime Log, please contact the SLCC DPS by calling, 801-957-3800.

Online Reporting Form

The online reporting form was created for individuals who may not want to file a complaint or report an incident to campus law

enforcement. This form is to be used to report sexual harassment, attempted or completed sexual violence, stalking, intimate partner or dating violence, or discrimination based on sex in a college program or activity. If you or someone you know has been the victim of any of these, you are encouraged to bring it to the attention of the Title IX Coordinator and/or other college officials.

If an individual chooses to use the online reporting form, it is recommended to fill out as much information as possible based on their knowledge of the situation. Anonymous reports may be submitted; however, without the contact information of the Complainant and the ability to investigate further, the college may be limited in how it can respond.

See, Appendix A, Online Reporting Form.

Timely Warning Policy and Procedure

Issue Timely Warnings:

The College must provide timely warnings about Clery Act crimes that pose a serious or ongoing threat to the campus community. This is determined by one (or more) College official(s) who have been pre-identified in the College's ASR. Because the nature of criminal threats is often not limited to a single location, timely warnings must be issued in a manner likely to reach the entire campus community. Timely warnings may be issued for Clery crimes occurring in Clery reportable locations.

Exception: Crimes that would otherwise be reportable but are reported to a licensed mental health counselor in the context of a privileged (confidential) communication are not subject to the timely warning requirement.

Criteria for Issuing a Timely Warning:

The College will issue a Timely Warning whenever the following criteria are met: 1) a Clery Act crime is reported; 2) the crime occurred in a Clery Reportable Location; 3) the perpetrator has not been apprehended; and 4) there is a serious or ongoing threat to the campus community because of this crime. The decision to issue a Timely Warning shall be made on a case-by-case basis using the following criteria:

- ▶ The nature of the crime
- ▶ The continuing danger to the campus community
- ▶ The possible risk of compromising law enforcement efforts

In order to make a Timely Warning consideration, all Campus Security Authorities (CSAs) and local law enforcement agencies are directed to immediately report Clery Crimes to the SLCC Department of Public Safety.

If the Timely Warning criteria are met, a notice will be drafted using crime-specific templates and issued by the Director of Public Safety (or designee) as soon as pertinent information is available. Timely Warnings are generally issued via email but may also be distributed through press releases, text messages, posters, desktop alerts, and messages on SLCC's website when appropriate. The College may not use all distribution methods for every incident.

Content of a Timely Warning:

The following information is typically included in a Timely Warning, if available:

- ▶ A statement of the incident, including the nature and severity of the threat and the persons or locations that might be affected;
- ▶ Any connection to a previous incident(s);
- ▶ Physical description and/or composite drawing of the suspect;
- ▶ Date and time warning was released;
- ▶ Other relevant and important information (e.g., gender of the victim, student/non-student, etc.);
- ▶ Appropriate safety tips.

Emergency Notification and Evacuation

The College is required to inform the campus community about a significant emergency event or dangerous situation involving an immediate threat to the health or safety of College faculty, staff, employees, students, and visitors occurring on or near College grounds. An emergency notification expands the definition of timely warning as it includes both Clery Act crimes and other types of emergencies (e.g., fire, infectious disease outbreak, etc.). Emergency events may be localized; therefore, notifications may be tailored exclusively to the segment of the campus community at risk.

The College also must have emergency response and evacuation procedures in place specific to its on campus facilities. A summary of these procedures must be disclosed in the ASR. Additionally, the emergency response procedures must be tested at least once annually.

Exception: Emergencies where issuing a notification would compromise efforts to assist a victim, contain the emergency, respond to the emergency, or mitigate the emergency are not subject to the emergency notification requirement.

Campus Alert System

SLCC maintains a notification system, known as the "Emergency Alert System (EAS)." In the event of an emergency, the EAS sends out a notification to all students and employees. Students have the option of removing their information from the EAS service. The notification is sent out via mobile and landline telephones, SMS, and e-mail. For more information regarding the EAS go to <https://i.slcc.edu/emergency-prepare/emergency-alert-notification-instructions.aspx>.

Students and employees may also add additional personal contact information to the EAS (by clicking the link above) so they will

have the opportunity to receive the emergency information by way of all their contact devices. In the event of a significant emergency or dangerous situation on campus involving an immediate threat to the health or safety of students or employees, the Associate Vice President of Public Safety will confirm the existence of the emergency or situation. The Associate Vice President of Public Safety will determine the appropriate segments of the campus community to receive a notification and will determine the content of the notification. The Associate Vice President of Public Safety, or designee, will initiate the Campus Alert system.

The Campus Alert system at SLCC is a third-party hosted email and text messaging system for emergency communications. The College conducts two annual Campus Alert system tests. The April test is in conjunction with ShakeOut– the annual statewide earthquake exercise.

Emergency Response and Evacuation Policy and Procedures

Salt Lake Community College (SLCC) has an Emergency Management Team that consists of the Associate Vice President of Public Safety, campus law enforcement, emergency management, and the President or Acting President. The members of this team have authority to grant activation of emergency response procedures, the Emergency Notification and Messaging System (Timely Warnings or Emergency Notifications), and the Emergency Coordination Center as needed. The actions of this team will be consistent with those included in the Salt Lake Community College Emergency Operations Plan as well as the Emergency Response Procedures. Based on the type of emergency and response that ensues, Public Relations will be notified to assist with the dissemination of public information accordingly.

The Emergency Operations Plan and its Annexes and Appendices are reviewed and updated by the Emergency Advisory Council

on an annual basis. The Emergency Procedures are reviewed and updated annually as well and are printed in a flipchart format, published and distributed throughout the campuses as well as published on the SLCC Emergency Preparedness website, <http://i.slcc.edu/emergency-prepare/index.aspx>. This flipchart gives clear direction and instruction for student and staff response according to the type of emergency with instructions on how to report the emergency. Instructions on how to report a crime are also included in the Emergency Response Procedures. Campus closures are also included. Student and staff orientation includes training on emergency procedures as well as ongoing required staff training.

Testing of Emergency Plans and Procedures

The Emergency Management office is responsible, in conjunction with the SLCC Emergency Advisory Council, SLCC Fire Marshal, the SLCC Environmental Health and Safety department and the SLCC DPS, to conduct emergency response exercises at least annually and include community response partners. These exercises are objective drive to test emergency plans and procedures. A Multi-year Training and Exercise Plan has been developed and includes

a comprehensive designation of groups that are included in the exercises and the objectives that are being tested. Exercises may be announced or unannounced and will be in the form of a table top, functional or full scale exercise and Master Exercise Plans are developed. After the exercise has been done, an After Action Report is written to address issues and improvement plans and distributed to all participating agencies.

The College participates in the Great Utah Shakeout annually and publicizes the exercise activities and the mass notification that will take place in the College Globe Newspaper and in social media messages sent out by Public Relations. Information on this exercise may also be found on the Emergency Preparedness website.



How Will You Know if You Need to Evacuate, Shelter-in-Place or Secure-in-Place?

If an incident occurs, a notification may come from several sources, an emergency message via the Emergency Mass Notification System, campus safety officer, Building Marshal, CERT member, employees of the SLCC DPS, Emergency Management, police or fire personnel, or other emergency services personnel.

Evacuation

Evacuation procedures are included in the Emergency Procedures flip chart. Staff and students should take the initiative to identify the location of emergency exits and the stairwells in the areas they frequent and be familiar with posted evacuation floor maps.

The building must be evacuated if the fire alarm sounds or if you are instructed to evacuate by law enforcement, fire personnel, facility personnel, administrative representative, or building marshal. The fire alarm is the fastest way to signal a full building evacuation and should be used in the event of fire, hazardous materials spill, or other emergency. Never ignore the fire alarm. If, however, you are the one that discovers a fire, follow evacuation procedures and call 911 and 801-957-3800 as soon as you are safe to do so.

(The Fire Alarm should NOT be used in the event of an Active Shooter situation). When Instructed to Evacuate the Building:

- ▶ Always leave the building immediately. Turn off equipment and lights and close the door behind you. (A closed door will limit the spread of heat and smoke and will also act as a fire barrier and can serve as a theft deterrent in case of other evacuations). Do not take personal belongings.

- ▶ Use stairways to exit. Never use an elevator as an emergency exit. Leave the building through the nearest and safest exit.

As you evacuate the building:

- ▶ Please be aware of individuals with disabilities who are also trying to leave the building and offer assistance where you can. The College has placed devices called Evacu-Trac in many buildings to assist in the evacuation of individuals who use wheelchairs or have mobility challenges. For assistance, in evacuating an individual with a disability, contact your Building Marshal, or the Department of Public Safety. Know where the nearest Evacu-Trac device is located and learn how to use it.
- ▶ If you encounter individuals who are ignoring the fire alarm or the request to evacuate, instruct them to leave the building immediately. If they do not respond, report their location to building marshal, police, or fire fighters after you have safely evacuated.
- ▶ Once outside, move to your assigned Emergency Assembly Point (EAP) and take account of all individuals. For a map of EAPs visit <http://i.slcc.edu/emergency-prepare/building-evacuation.aspx>.
- ▶ Keep streets and walkways clear for emergency vehicles and personnel.
- ▶ Supervisors need to account for all employees under their supervision.
- ▶ Do not reenter the building until it is determined that it is safe to do so by Fire personnel or the Fire Marshal.

If Shelter-in-Place or Secure-in-Place is appropriate, the following apply:

Shelter-in-Place Procedures

Shelter-In-Place may be recommended during several different types of events (i.e. hazardous weather, hazardous material, or others).

In general, when you receive instructions to shelter-in-place and you are outside, immediately move inside the nearest building and remain there until you receive further instructions.

If possible, warn anyone outside to get inside immediately.

- ▶ Seek shelter in interior rooms with as few doors and windows as possible
- ▶ Close the door
- ▶ Stay away from windows
- ▶ Follow instructions contained in emergency notifications

Note: Every employee should have access to an Emergency 72 hour Kit. Each department is responsible for providing and maintaining these kits.

Atmospheric Contamination

There may be circumstances when staying put and creating a barrier between yourself and potentially contaminated air outside, a process known as “sealing the room,” is a matter of survival. Use common sense and available information to assess the situation and determine if there is immediate danger. If you see large amounts of debris in the air, or if local authorities say the air is badly contaminated, you may want to take this kind of action. The process used to seal the room is considered a temporary protective measure to create a barrier between you and potentially contaminated air outside. It is a type of sheltering in place that requires preplanning.

- ▶ Lock doors, close windows, air vents.
- ▶ Turn off fans, air conditioning and forced air heating systems.
- ▶ Take your emergency supply kit unless you have reason to believe it has been contaminated.
- ▶ Go into an interior room with few windows, if possible.
- ▶ If possible, seal all windows, doors and air vents with 2-4 mil thick plastic sheeting and duct tape. Consider measuring and cutting the sheeting in advance of an emergency to save time.
- ▶ Cut the plastic sheeting several inches wider than the openings and label each sheet.
- ▶ Duct tape plastic at corners first and then tape down all edges.
- ▶ Be prepared to improvise and use what you have on hand to seal gaps so that you create a barrier between yourself and any contamination.

Secure-in-Place

Secure-in-Place is recommended when a known threat of violence exists or there is an actively violent situation and it is unsafe or impractical to evacuate the area. If you are in an area that cannot be secured, proceed immediately to an area that is away from the incident site and that can be secured. Lock doors separating classrooms or offices from the hallway or internal foyers. If the door does not lock, barricade the door with desks, chairs, bookcases, doorstops, or any other available furniture that would prevent someone from entering the room. Turn off the lights. Cover windows or openings that would allow an individual to see into the room. Keep everyone calm and quiet; turn off audio equipment and set cell phones to “silent.” The goal is to make the room appear unoccupied. Remain in place until emergency responders indicate that it is safe to leave.

Active Shooter / Violent Intruder

The College's goal is to maintain a teaching and learning environment that is safe for students, employees, and visitors at our College sites. The information presented below is intended to serve as a guide and is based on recommendations from law enforcement experts.

ACTIVE SHOOTER PROTOCOL

RUN!

Exit the area immediately if possible. Try to take others with you but do not stay if they refuse to go. Leave your belongings behind. Do not run in a straight line; take cover behind any available objects as you run. Once you are out of the area, prevent others from going in. Call 911 as soon as it is safe to do so. If you encounter law enforcement, put your hands up immediately and follow their directions.

HIDE!

If running is impossible or unsafe, you may decide to hide / Secure-In-Place. Act quickly and quietly. Your hiding place should be out of the view of the shooter. If inside lock and barricade the doors by any means possible. Turn off the lights and stay quiet. SILENCE YOUR CELL PHONE, including the vibration mode. Look around for items you can use as a weapon against the shooter should you end up having to fight. Avoid huddling together as much as possible as that gives the shooter a larger target to shoot at. Remember to stay put until law enforcement comes to get you out. It may take several hours for them to clear the area, keep your phone on silent and be patient.

FIGHT!

If your life is at stake, you may have to make the decision to fight back. If with a group, work together on how you will attack the shooter. Look for any items that can be used as a weapon, chairs, fire extinguisher, belts, drawers, scissors, pens or pencils, anything that can cause harm. Act with fearless aggression, you may be fighting for your life. You must absolutely commit to taking the shooter down.

DO NOT Pull the Fire Alarm in the event of an Active Shooter.

Note: When you see responding Law Enforcement officers, follow their instructions exactly and as quickly as possible. Police may detain you, ask you to get on the ground, put your hands behind your head, etc. Once it is determined that you are not a threat, they will give you directions on moving to another location.

For more information, review the Active Shooter Response Training Video at <https://www.slcc.edu/police/active-shooter-training.aspx>

Take FEMA Training IS-907 Active Shooter:
What You Can Do <https://training.fema.gov/is/courseoverview.aspx?code=IS-907>



Campus Facilities Security and Access

The Facilities and Maintenance Department maintains College buildings and grounds with a concern for safety and security. They inspect these facilities regularly and promptly make repairs. Students and employees are encouraged to call Public Safety at 801-957-3800 or Facilities at 801-957-4276 to report any hazard. The police and facilities department staffs routinely inspect the entire campus to review lighting and environmental safety concerns. A work request order may be submitted at <http://i.slcc.edu/facilities/request.aspx>.

Most campus facilities are open to the public during the day and evening hours when classes are in session. The Facilities Department regularly locks campus buildings at 10 p.m. each evening. Faculty and staff on site secure satellite buildings. Buildings are opened each morning beginning at 6 a.m. During times that the campus is officially closed, buildings are generally locked and accessible only to employees with keys.

Salt Lake Community College has established a well-defined key issuance and control policy. Only selected administrators are authorized to approve the issuance of keys to individuals within their assigned areas.

Periodic surveys and audits of campus departments are conducted to determine the status of keys issued to department personnel. It is against SLCC policy to duplicate any SLCC key.

Additional Crime Prevention and Safety Awareness Measures

Workshops are available to inform students and employees about crime prevention, crime awareness, and personal safety issues. We welcome information/feedback from those individuals who see a situation on campus that could be a safety hazard or security risk. Please contact Risk Management at 801-957-4041, The Department of Public Safety at 801-957-3800, or the designated police department to find out more information.

Dealing with Disruptive People/Workplace Violence Presentations

This presentation is prepared and presented by the Department of Public Safety. This presentation focuses on identifying disruptive, threatening, or violent behaviors and taking appropriate actions when encountering individuals with these behaviors. The information is presented to the Academic Deans, the Associate Deans, and Division meetings and upon request to individual departments or campus associations.

Further, presentations on topics such as specific crime-related issues to safety tips, crime prevention, safety awareness, Behavioral Intervention Team, Title IX training, and sexual assault prevention are provided at each of the four main campuses throughout the school year.

Equipment Identification

All items purchased by departments at SLCC should be identified by serial number, brand, and model. Departments are responsible for maintaining an accurate list of equipment in their department including serial numbers. Items over \$5,000 must be registered with the Property Control Department and receive an assigned SLCC asset number and sticker. Computers that are over \$1,000 must also receive an SLCC asset number for tracking purposes. Missing items should be reported to the designated police agency immediately. Contact the inventory manager at 801-957-4010 for information on inventory control.

Lost and Found

Items that are lost or found may be turned in at the Public Safety Office in the GFSB, 801-957-4270, the Markosian Library, Student Center Auxiliary Office, STC 203, the recreation check-in desk in the Lifetime Activities Center, Jordan Campus HTC 004, and at South City

Campus in the ID Center 1-061. Items collected at these locations will be held for 72 hours. Thereafter they will be sent to the Office of the Surplus Manager, 801-957-4553. Unclaimed items left over 90 days are donated to charity.

Robbery Prevention Seminar

An annual seminar is held for those who handle cash on campuses. They are invited to training conducted by various law enforcement agencies. The training includes recognizing forged and counterfeit bills, what to do in case of a robbery, how to identify suspects, and how to preserve evidence. Contact the Revenue Manager at 801-957-4906 regarding the training.

Bicycles, Hoverboards, Skates, and Skateboards

Bicycle racks are provided for the securing of bikes. Bikes are not to be chained to handrails, meters, trees, fences, etc. For safety reasons, hoverboards, skates, and skateboards are not allowed on campus.

Lost Keys

Lost College keys should be turned in to the Key Office at the Taylorsville Redwood Campus, GFSB 105. At the South City Campus, keys are initially turned into South City Annex 103 but are sent to the Taylorsville Redwood Campus Key Office. If College keys are lost or stolen, report it immediately to the Key Office at 801-957-4102.

Books and Backpacks

Do not leave books or backpacks unattended in classrooms, restrooms, the cafeteria or other places on campus. Mark your books with your name and student number. The College Bookstore requires that students leave book bags and backpacks outside while shopping in the Bookstore. Please secure backpacks and other valuable items. Report all thefts to the police.



Parking Lot Escort Services

SLCC's DPS offers a parking lot safety escort service between 6 and 10 p.m., Monday through Friday. Request the service by calling 801-957-3800 from any campus. The nearest Campus Safety Officer (CSO) or Utah Highway Patrol Officer will be dispatched to escort you to your car. Always use the buddy system and walk with a friend after dark.

Utah Sex Offender Registration Act

The "Campus Sex Crimes Prevention Act" (amends 42 United States Code 14071), and

the Utah Sex Offender Registration Act (77-27-21.5, U.C.A.) require notice be given to institutions of higher education of persons required by the act to register and who are affiliated with the institution. The Utah Department of Corrections, Sex Offender Registration Program Office, will inform the SLCC DPS of registered sex offenders who are affiliated with SLCC. This information will be available from the Campus Police located in Room 101 of the GFSB at the Taylorsville Redwood Campus.

To learn more about registered sex offenders, please go to the Utah Department of Corrections Sex Offender Registry website at: http://www.communitynotification.com/cap_office_disclaimer.php?office=54438

General Safety Information

- ▶ If you sense a potential threat to yourself, attract attention to yourself by screaming, yelling "HELP!" or creating a commotion.
- ▶ If confronted by an armed person who demands you give them your property, give it up. Loss of property is not worth endangering your life.
- ▶ Avoid walking alone at night; walk with a friend or use the buddy system. Walk with a purpose; project an assertive, alert image. Have keys ready so you can quickly enter your car. If you are uncomfortable after dark walking alone, walk with a friend or call for an after dark escort from college Public Safety.
- ▶ Avoid walking alone. Let someone know where you are going and when to expect you.
- ▶ Always secure your valuables in your trunk and lock your car.
- ▶ When parking your vehicle, if you anticipate returning to it after dark, try to park in a well-lighted area.
- ▶ Look into your vehicle before you get in to be certain no one is hiding inside. Lock all doors and windows after entering your vehicle.
- ▶ Whenever you leave your office, classroom or home, lock all doors and windows.
- ▶ Report any suspicious activity or people, safety hazards, unsafe lighting, defective equipment or any other concern to SLCC Public Safety.
- ▶ Be aware of your surroundings, know where you are and know where you are going.
- ▶ Plan your walking trips. Choose a well-lighted, populated route.
- ▶ Keep money, stamps and other valuables locked away.
- ▶ Keep personal belongings in sight or take them with you as you move around a building.
- ▶ Never prop doors open, even for a short time.
- ▶ Be cautious of removing jewelry to wash hands. These items are easily lost or stolen.
- ▶ Avoid keeping money in your office or car.
- ▶ Keep ATM, debit and credit cards in a safe place. Never reveal a PIN number to anyone.
- ▶ Never loan your ATM card to anyone, no matter who they are.
- ▶ When possible, use ATM cards in daylight. If that is not possible, use an indoor ATM or one in an otherwise well-lit area.

If an incident does happen, be observant. You will want to give accurate suspect and vehicle descriptions. Report every incident to the police as soon as possible.

Behavioral Intervention Team (BIT)

The BIT is designed to assist faculty, staff and students in dealing effectively with situations involving student behaviors of concern. These situations may involve students struggling with various forms of individual distress, engaging in behaviors disruptive to the educational environment, or even posing a potential threat of harm to themselves or others.

The main purpose of the BIT is to educate members of the College community to identify and respond to students of concern with a focus on caring, prevention and early intervention. A related aim is to foster interdepartmental communication about struggling students while providing information coordination, consultation and feedback, assessment of needs and at-risk behaviors, and intervention and support strategies as warranted.

If the BIT determines that a student's conduct poses a life, personal safety or property threat to the College or those in the College community, the Chair of the BIT will notify the Director of Public Safety for consideration of a Timely Warning or Emergency Notification alert, in compliance with the Clery Act.

Alcohol, Tobacco, and Illegal Drugs

Salt Lake Community College has a stringent policy governing the use of alcohol and other drugs. The purchase, possession, use, consumption, sale, distribution, or storage of any alcoholic beverage, controlled substance, or illegal drug is prohibited on any campus or training site and at all College activities. In accordance with the Indoor Clean Air Act, all buildings on all campuses and centers are smoke-free, including any use of e-cigarettes.

SLCC is committed to facilitating a drug-free classroom environment and utilizes the Center

for Health and Counseling to increase campus awareness regarding alcohol and other drugs. The Center for Health and Counseling has locations at the Taylorsville Redwood, South City, and Jordan campuses and provide the following services:

- ▶ Educational information on substance abuse
- ▶ 12-step schedules
- ▶ Community referrals
- ▶ Classroom presentations
- ▶ Workshops on varied health issues
- ▶ Library of resource information
- ▶ Participate in national campaigns

Anyone found in violation of regulations prohibiting possession, using, or selling hallucinatory, narcotic, or other controlled substances, possession, consuming, or selling alcoholic beverages on campus (including athletic events), is subject to arrest. Additionally, according to the Anti-Drug Abuse Act of 1988 (Section 5301) students who receive Federal Financial Aid and are convicted of drug possession or distribution may become ineligible for Title IV financial aid.

Sexual Assault, Dating/ Domestic Violence, and Stalking

In accordance with federal law, SLCC does not discriminate on the basis of sex in educational programs and prohibits sexual assault, dating violence, domestic violence, and stalking. Sexual assault is a concern on college and university campuses nationwide. We are fortunate at SLCC to have a relatively low rate of sexual assault. However, one is too many, and it is understood that many sexual assaults go unreported.

Procedures for Reporting Sexual Assault, Dating Violence, Domestic Violence, and Stalking

Any incidents of sexual assault, dating violence, domestic violence, or stalking should be reported directly to the SLCC DPS, contracted law enforcement agency, or with the agency where the incident occurred. Filing a police report will not obligate the victim to pursue a complaint through the criminal process, nor will it subject the victim to scrutiny or judgmental opinions from officers. The SLCC DPS and the SLCC Title IX administration strongly encourage victims to report incidents of sexual assault in a timely manner. Time is a critical factor for evidence collection and preservation.

Filing a police report will:

- ▶ Ensure that a victim of sexual assault receives the necessary medical treatment and tests, at no expense to the victim;
- ▶ Provide the opportunity for collection of evidence helpful in prosecution, which cannot be obtained later; and
- ▶ Make the victim aware of resources available for confidential counseling from counselors specifically trained in the area of sexual assault crisis intervention.

When a victim of sexual assault, dating violence, domestic violence, or stalking contacts the SLCC DPS or any law enforcement agency contracted by SLCC, the Director, EO/ Title IX, and Dean of Students will be notified. The victim may choose for an investigation to be pursued either through the criminal justice system and/or through the college investigatory findings process, (when an alleged perpetrator is a student, faculty, or staff), or through both processes.

Victims may choose not to proceed as a Complainant in a criminal process. The Title IX Director will guide the victim through the available options and consider the input of the victim in determining proceeding with an investigation. If a victim is reluctant, does not wish to provide information or participate in a college investigation, that decision may hinder the college's ability to investigate and eliminate the threat posed by a perpetrator.

Individuals who witness, are subjected to, or are informed about incidents of sexual assault, dating violence, domestic violence, stalking, or any form of sexual harassment may file a complaint with a designated SLCC employee, including:

Cindy Cole
Title IX Coordinator
Taylorsville Redwood - TB 222
801-957-4561
ccole58@slcc.edu



The Title IX Director will inform individuals of their rights to file criminal charges as well as the availability of counseling, health, mental health, victim advocacy, legal assistance, visa and immigration assistance, and other services on and/or off campus. The Title IX Director will assess the immediate safety needs of the victim, provide the victim with access to medical care, and assist the victim in notifying/contacting the SLCC DPS or appropriate law enforcement agency if the victim so chooses. The Title IX Director will take steps to address the conduct, protect and assist the victim, remediate effects, and assign an investigative authority to review the complaint. The investigation process allows for resolution of the conduct to include rendering a final decision regarding the complaint and taking action to prevent the recurrence of the conduct.

Guidelines or Suggestions to Follow After a Sexual Assault, Dating Violence, Domestic Violence or Stalking (as applicable to the specific incident):

- ▶ Go to a safe place as soon as you can.
- ▶ Call 911 in the event of an emergency.
- ▶ Get medical attention as soon as possible to make sure you are physically well and to collect important evidence in the event you may later wish to take legal action.
- ▶ Try to preserve all physical evidence. Do not wash, use the toilet, shower, or change clothing if you can avoid it. If you do change clothes, put all clothing you were wearing at the time of the attack in a paper, not plastic, bag.
- ▶ In cases of sexual assault, domestic violence, dating violence, and stalking, preserve evidence by saving text messages, instant messages, social networking pages, communications, pictures, or other documents, if any, that would be useful to police or investigators.
- ▶ Talk with SLCC personnel to help explain your options, give you information, and provide emotional support.

Procedures for Investigating Sexual Assault, Dating Violence, Domestic Violence, and Stalking

The following specifies the procedures that SLCC will follow once an incident of sexual assault, domestic violence, dating violence, sexual assault, or stalking has been reported.

Upon notice of a sexual assault, dating violence, domestic violence, or stalking complaint, SLCC will make every effort to ensure a prompt, fair, and impartial investigation and resolution transparent to the Respondent and Complainant. An investigation involves analysis of the initial report, and upon that analysis providing a basis to move the investigation forward, interviews with the Complainant, the Respondent, witnesses, collection of relevant data and documents, possible inspection of the location of the alleged offense, and other investigative actions necessary to collect and analyze evidence and determine findings will occur. If a report involves both a student and employee, the Dean of Students and EO/Risk Administration coordinates the investigation together. When determined as appropriate, the College reserves the right to report the allegations to the relevant geographic law enforcement agency.

In order to provide students and/or employees with a fair, prompt, and impartial investigative process for allegations of sexual assault, dating violence, domestic violence, or stalking, SLCC provides:

- ▶ Investigations will be conducted by officials who, at a minimum, receive annual training on the issues related to dating violence, domestic violence, sexual assault, and stalking and on how to conduct an investigation that protects the safety of victims and promotes accountability.
- ▶ Investigations will be conducted by officials who do not have a conflict of interest or bias for or against either party.

- ▶ The Complainant and Respondent have equal opportunities to have others present during investigative proceedings, including an attorney or advisor of their choice.
- ▶ SLCC will not limit the choice of advisor or presence for either party in any meeting or institutional disciplinary proceeding; however, the institution may establish restrictions regarding the extent to which the advisor may participate in the proceedings, as long as the restrictions apply equally to both parties.
- ▶ The parties will receive simultaneous notification, in writing, of the result of the investigation and any appeal procedures.
- ▶ The investigation will typically be completed in a reasonably prompt time frame (120 days).
- ▶ The Complainant and Respondent are given timely notice of meetings at which one or the other or both may be present.

Advisor means any individual who provides the Complainant or Respondent support, guidance, or advice.

Proceeding means all activities related to a non-criminal resolution of an institutional disciplinary complaint, including, but not limited to, fact-finding investigations, formal or informal meetings, and hearings.

Proceeding does not include communication and meetings between official and complainants concerning accommodations or supportive measures to be provided to a complainant.

Result means any initial, interim, and final decision by any official or entity authorized to resolve disciplinary matters within the institution. The result must include any sanctions imposed by the institution.

Notwithstanding section 444 of the General Education Provisions Act (20 U.S.C. 1232g), commonly referred to as the Family Educational Rights and Privacy Act (FERPA), the result must also include the rationale for the result and the sanctions.

Standard of Evidence

Investigations conducted by SLCC use a preponderance of the evidence standard, i.e., more likely than not that sexual harassment or violence occurred, and allows for both the complainant and respondent to have others present during proceedings. Individuals conducting investigations receive training at least annually that covers investigation and grievance models to address sexual assault, dating violence, domestic violence, and stalking.

Issuance of Findings and Appeal of Findings of an Investigation

The goal is to resolve investigations/complaints within 120 days; however, unusual circumstances requiring additional time may necessitate an extension. A summary report of investigative findings will be issued to both the Complainant and the Respondent simultaneously, in writing, along with other relevant personnel, such as a supervisor if a party to the report is an employee. Either party may request an appeal/grievance hearing through the respective policies, either SLCC policy Chapter 2, Section 3.06, Employee Grievance Procedure for employees or for students, through the Student Standards Committee in accordance with procedures outlined in the Student Code of Conduct, SLCC Policy Chapter 3, Section 2.01.

Sanctions/Discipline For Students

Depending on the severity of the sexual assault, dating violence, domestic violence, stalking and/or any other complaint, including use of weapons, threats and/or patterns of conduct and/or predation, the sanctions that may be imposed on students for findings of misconduct are:

Reprimand and Warning: A student may be given a reprimand accompanied by a written

warning that the student may receive additional sanctions if the student engages in the same misconduct again or commits any other violation of this Code. A reprimand and warning will remain a part of a student's disciplinary record at least until they graduate.

Reflective Activity: A student may be required to complete a reflective activity, such as writing a letter of apology or other written activity, which demonstrates the student's learning and increased understanding of the College's expectations regarding behavior.

Administrative Withdrawal: A student may be administratively withdrawn from any or all courses during the semester in which the violation of College policy occurred. An administrative withdrawal will remain a part of a student's disciplinary record at least until they graduate.

Disciplinary Probation: A student may be placed on disciplinary probation for a specified period of time under conditions specified in writing with a warning that any violation of the conditions or any further acts of misconduct may result in additional disciplinary sanctions, including suspension or expulsion from the College. As a condition of probation, the student may be required to participate in a specific program, such as a counseling program or an alcohol education program, or to provide a specific service, such as the repair or restoration of any property damaged or taken by the student. A record of any disciplinary probation will remain a part of a student's disciplinary record for five years after a student graduates.

Restitution: A student may be required to pay the cost for the replacement or repair of any property damaged by the student. If the student fails to pay the cost or make repairs, the student may be subjected to additional sanctions, including suspension or expulsion. A record of any restitution that a student is required to pay will remain a part of a student's disciplinary record until they graduate.

Participation in a specific program: A student may be required to participate in a specific

program, such as a counseling program, a program designed to stimulate good citizenship within the College community, an alcohol education program, anger management, or any other activity which would foster civic engagement. If the student fails to participate in the program as directed, the student may be subjected to additional sanctions, including suspension or expulsion. The student must provide the College with verification of program completion and evidence of personal well-being. Verification of program completion must be from a certified agency or appropriately certified health care provider or mental health counselor. A record of participation in any specific program that a student is required to complete will remain a part of a student's disciplinary record until they graduate.

Provision of a specific service: A student may be required to provide a specific service, such as the repair or restoration of any property damaged or taken by the student. If the student fails to provide the service as directed, the student may be subjected to additional sanctions, including suspension or expulsion. Completion of a specific service will remain a part of a student's disciplinary record until they graduate.

Suspension: A student may be prohibited from participating in all aspects of College life for a specified period of time (some portion of which may be deferred at the direction of the Dean of Students). When a student is suspended from the College, the suspension applies to all campuses of the College. The Dean of Students is required to notify the Office of the Registrar and Academic Records to indicate the suspension on all copies of the student's academic transcript. When the term of the suspension has ended, the Registrar will remove the notation from the student's transcript. A record of the term of suspension will remain a permanent part of the student's disciplinary record.

Expulsion: A student may be dismissed from the College permanently. When a student is expelled from the College, the expulsion applies to all campuses of the College. The

Dean of Students is required to notify the Office of the Registrar and Academic Records to indicate the expulsion on all copies of the student's academic transcript. Furthermore, the student may not thereafter petition for readmission to the College. A record of expulsion will remain a permanent part of the student's disciplinary record.

Deferred sanction: Sanctions of expulsion from and/or suspension from Salt Lake Community College may be deferred for a period of time not to exceed one year, with the provision that lesser sanction/s be completed and/or no further violations are committed within that period of time. If the student does not consent to the determination of responsibility or the sanction imposed, the student may request a hearing before the Student Standards Committee, depending on the level at which the deferred and lesser sanctions were imposed. If the deferred sanction is imposed, the following apply:

- ▶ If the lesser sanction(s) is/are completed in the time period assigned, the deferred sanction will not be implemented.
- ▶ If the lesser sanction(s) is/are completed in the time period assigned due to medical, academic, or personal reasons, the student may apply, in writing, to the Dean of Students for an extension of that time period. The written request must be submitted at least three (3) calendar days prior to the end of the time period. With their application for an extension, students must present documentation of the personal, academic, or medical reasons they were unable to meet the deadlines, and they must show that they have completed a significant portion of their lesser sanction(s). The Dean of Students will deliver a decision about the extension to the student within fourteen (14) calendar days after receipt of the request.
- ▶ If the lesser sanctions are not completed in the time period assigned and no extension to the time period is requested or granted, or the student is found responsible for a

new violation, the deferred sanction will automatically go into effect, and the student will have no further opportunity to appeal the deferred sanction.

- ▶ Deferred suspensions that are put into effect will begin in the semester in which the lesser sanction deadline was not met, or in which a new violation occurred. If the suspension is to include more than one semester, it will include the semester in which the lesser sanction deadline was not met or the new violation occurred, plus the subsequent semester/s.
- ▶ A student who is suspended risks losing all fees and grades for the semester in which the suspension is implemented.
- ▶ A record of a deferred sanction will remain part of a student's disciplinary record for five years after the student graduates (or permanently if the suspension has been implemented).

Corrective Action For Employees

Depending on the severity of the sexual assault, dating violence, domestic violence, stalking and/or any other complaint, including use of weapons, threats and/or patterns of conduct and/or predation, corrective actions that may be imposed on employees for findings of sexual misconduct are:

- ▶ Verbal Warnings
- ▶ Written Warnings
- ▶ Probation
- ▶ Termination of Employment
- ▶ Prohibition on Retaliation

Salt Lake Community College has a strong prohibition on retaliation. Retaliation exists when an individual harasses, intimidates, or takes other adverse actions against a person because of that person's participation in an investigation of discrimination or sexual misconduct or their support of someone involved in an investigation of discrimination or sexual misconduct.



Retaliatory actions include, but are not limited to, threats or actual violence against the person or that person's property, adverse educational or employment consequences, ridicule, intimidation, bullying, or ostracism. Salt Lake Community College will impose sanctions on any faculty, student, or staff member found to be engaging in retaliation, or individuals who encourage third parties to retaliate on their behalf.

Instances of retaliation are prohibited, will be investigated, and may result in further conduct charges or disciplinary actions.

The Code of Student Rights and Responsibilities

The Code of Student Rights and Responsibilities provides governing regulations for the behavior of our student body. The Code states the specific authority and responsibilities of the College in maintaining social discipline, outlines the process for legitimate grievances and establishes the proper procedures to be followed to ensure "due process" to protect students from unfair processes, and/or unfair imposition of penalties and sanctions. The primary objective for the administration of discipline under the Student Code of Conduct is to foster ethically responsible behavior and protect the campus community. <https://www.slcc.edu/policies/policies/student-affairs/8.1.050.aspx>

Employee Policies/Procedures Regarding Professional Conduct

Title IX Sexual Harassment Policy, SLCC office responsible for Title IX oversight, covers sexual harassment, details processes, rights, and responsibilities.

Anti-Discrimination and Harassment, covers all discrimination prohibition, details processes, rights, and responsibilities.

Employee Conduct, details professional conduct standards, references summarize other relevant laws/policies.

Supportive Measures for Victims of Sexual Assault, Dating Violence, Domestic Violence, and Stalking

Parties who have experienced sexual assault, harassment, discrimination, dating/domestic violence, stalking, and related retaliation are afforded additional protections and options (supportive measures) beyond those provided by the typical student conduct process, such as:

- ▶ Notice of the Parties' options to avoid contact with the alleged perpetrator.
- ▶ Allow the Parties to change academic (course scheduling, extension on assignments, or moving testing date/location) and extracurricular activities or his or her transportation, dining, and working situation as appropriate.
- ▶ Ensure that the Parties is aware of his or her Title IX rights and any available resources, such as victim advocacy, academic support, counseling, disability services, health and mental health services, legal assistance, and the right to report a crime to campus or local law enforcement.

When determining what supportive measures to take, SLCC will consider the specific need expressed by the Parties; the age of the students involved; the severity or pervasiveness of the allegations; any continuing effects on the Parties; whether the Parties share the same residence, class, transportation, or job location; and whether other judicial measures have been taken to protect the Parties (e.g., civil protective orders).

On-Campus and Community Resources for Victims

Counseling Services

The SLCC Center for Health and Counseling are available to students, faculty, and staff of the College. Counseling sessions are \$15 per session, and fee waivers are available by request. Counseling services can assist individuals with anxiety or depression, relationship issues, family issues, test anxiety, relaxation, stress management skills, and any other personal concerns. The Centers have established annual and ongoing programs to assist students in a variety of areas and all services are confidential.

Locations:

Taylorsville Redwood Campus, STC 035
4600 South Redwood Road
Taylorsville, Utah 84123
801-957-4268

Jordan Campus, JSTC, Room 160
3491 W 9000 S
West Jordan, UT 84088
801-957-6290

South City Campus, 1-143
1575 South State Street
Salt Lake City, Utah 84115
801-957-3323

Employee Assistance Program

ComPsych, our EAP (Employee Assistance Program), provider can help you to privately resolve problems that may interfere with work, family, and life in general. Your EAP is provided for FREE to you and dependents, living at or away from home, as well as household members, related or not. EAP services are always confidential.

- ▶ 24 Hour Crisis Line and EAP Questions: 1-800-922-2687

- ▶ 8 free Counseling Sessions Per Issue for Full-Time Employees, spouses, and dependents over phone, video, chat or in-person sessions.
- ▶ Go to guidanceresources.com or download the GuidanceNow™ app
Select Register and then enter your Organization
Web ID: EAPU
After entering this one-time code, you'll create your own username and password to access your resources anytime.

Salt Lake Rape Recovery Center

Empowering those victimized by sexual violence through advocacy, crisis intervention, therapy, and to educate the community about the cause, impact, and prevention of sexual violence.

Location:
2035 South 1300 East
Salt Lake City, UT 84105
Office: 801-467-7282
Fax: 801-467-7280
Office hours:
Monday - Thursday: 9 a.m. – 5 p.m.
24-Hour Crisis Line: 801-736-4356

Utah Crisis Line and Mobile Crisis Outreach Team

The Utah Crisis Line offers personalized, round-the-clock support from certified crisis workers trained in suicide prevention, de-escalation, and stabilization. Callers receive individualized care and are connected to vital mental health resources. In collaboration with the Mobile Crisis Outreach Teams (MCOT), the Crisis Line provides in-person crisis intervention when needed. Individuals in emotional distress or suicidal crisis can continue to access help through the Utah Crisis Line at 1-800-273-8255 or locally at 801-587-3000.

Suicide and Crisis Lifeline

Help is available, text or call 988.

National Sexual Assault Telephone Hotline (RAINN)

24-Hour Crisis Line: 800-656-HOPE (4673)

National Domestic Violence Hotline

800-799-7233



Definitions of Clery Act Locations

Campus is defined as any building or property owned or controlled by an institution of higher education within the same reasonably contiguous geographic area of the institution and used by the institution in direct support of, or in a manner related to, the institution's educational purposes, including residence halls; and Property within the same reasonably contiguous geographic area of the institution that is owned by the institution but controlled by another person, is frequently used by students, and supports institutional purposes (such as a food or other retail vendors).

Non-Campus is defined as any building or property owned or controlled by a student organization recognized by the institution; or any building or property (other than a branch campus) owned or controlled by an institution of higher education that is used in direct support of, or in relation to, the institution's educational purposes, is frequently used by students, and is not within the same reasonably contiguous geographic area of the institution.

Public Property means all public property, including thoroughfares, streets, sidewalks, and parking facilities, that are within the campus, or immediately adjacent to and accessible from the campus.

Definitions of Clery Act Offenses

The following definitions are taken from the Uniform Crime Reporting Handbook.

Murder: The willful (non-negligent) killing of one human being by another.

Manslaughter by Negligence: The killing of another person through gross negligence.

Robbery: The taking, or attempting to take, anything of value from the care, custody or control of a person by force, or threat of force or violence and/or by putting the victim in fear of immediate harm.

Burglary: The unlawful entry into a building or other structure with the intent to commit a felony or a theft.

Aggravated Assault: An unlawful attack by one person upon another for the purpose of inflicting severe or aggravated bodily injury. This type of assault usually is accompanied by the use of a weapon or by means likely to produce death or great bodily injury.

Arson: The willful or malicious burning or attempt to burn with or without intent to defraud a dwelling house, public building, motor vehicle or aircraft, personal property of another, etc.

Larceny Theft: The unlawful taking of property from the possession of another.

Motor Vehicle Theft: The theft or attempted theft of a motor vehicle (includes joyriding).

Liquor Law Violations: The violation of state or local laws or ordinances prohibiting the manufacture, sale, purchase, transportation, possession, or use of alcohol. (Does not include DUI.)

Drug Abuse Violations: The violation of laws prohibiting the production, distribution and/

or use of certain controlled substances and the equipment or devices utilized in their preparation and/or use. The unlawful cultivation manufacture, distribution, sale, purchase, use, possession, transportation or importation of any controlled drug or narcotic substance. Arrests for violations of state and local laws specifically those relating to the unlawful possession, sale, use, growing, manufacturing and making of narcotic drugs.

Weapon Law Violations: The violation of laws or ordinances prohibiting the manufacture, sale, purchase, transportation, possession, concealment, or use of firearms, cutting instruments, explosives, incendiary devices or other deadly weapons.

Hate Crimes: A criminal offense that manifests evidence that the victim was intentionally selected because of the perpetrator's bias against the victim.

Race: A preformed negative attitude toward a group of persons who possess common physical characteristics.

Gender: A preformed negative opinion or attitude toward a person or group of person based on their actual or perceived gender, e.g. male or female.

Religion: A preformed negative opinion or attitude toward a group of persons who share the same religious beliefs regarding the origin and purpose of the universe and the existence or nonexistence of a supreme being.

Sexual Orientation: A preformed negative opinion or attitude toward a group of person based on their actual or perceived sexual orientation.

Gender Identity: A preformed negative opinion or attitude toward a person or group of persons based on their actual or perceived gender identity. e.g. bias against transgender or gender non-conforming individuals.

Ethnicity: A preformed negative opinion or attitude toward a group of people whose members identify with each other, through

a common heritage, often consisting of a common language, common culture (often including a shared religion) and/or ideology that stresses common ancestry. The concept of ethnicity differs from the closely related term race in that “race” refers to grouping based mostly upon biological criteria, while “ethnicity” also encompasses additional cultural factors.

National Origin: A preformed negative opinion or attitude toward a group of people based on their actual or perceived country of birth.

Disability: A preformed negative opinion or attitude toward a group of persons based on their physical or mental impairments/ challenges, whether such disability is temporary or permanent, congenital or acquired by heredity, accident, injury, advanced aged or illness.

Destruction/Damage/Vandalism of Property: To willfully or maliciously destroy, damage, deface, or otherwise injure real or personal property without the consent of the owner or the person having custody or control of it.

Intimidation: To unlawfully place another person in reasonable fear of bodily harm through the use of threatening words and/or other conduct, but without displaying a weapon or subjecting the victim to actual physical attack.

The following definitions are taken from the National Incident-Based Reporting System of the UCR program.

Sex Offense: Any sexual act directed against another person, without the consent of the victim, including instances where the victim is incapable of giving consent.

Rape: The penetration, no matter how slight, of the vagina or anus with any body part or object, or oral penetration by a sex organ of another person, without consent of the victim.

Fondling: The touching of the private body parts of another person for the purpose of sexual gratification, without the consent of the victim, including instances where the victim is incapable of giving consent because of his/her age or because his/her temporary or permanent mental incapacity.

Incest: Sexual intercourse between persons who are related to each other within the degrees wherein marriage is prohibited by law.

Statutory Rape: Sexual intercourse with a person who is under the statutory age of consent.

The Higher Education Act (HEA) defines the new crime categories of domestic violence, dating violence, and stalking in accordance with section 40002(a) of the Violence against Women Act of 1994 as follows:

Domestic Violence: A felony or misdemeanor crime of violence committed by

- ▶ A current or former spouse or intimate partner of the victim,
- ▶ A person with whom the victim shares a child in common,
- ▶ A person who is cohabitating with or has cohabitated with the victim as a spouse or intimate partner,
- ▶ A person similarly situated to a spouse of the victim under the domestic or family violence laws or the jurisdiction receiving grant monies [under VAWA], or
- ▶ Any other person against an adult or youth victim who is protected from that person’s acts under the domestic or family violence laws of the jurisdiction.

Dating Violence: Violence committed by a person who is or has been in a social relationship of a romantic or intimate nature with the victim.

The existence of such a relationship shall be determined based on a consideration of the following factors:

- ▶ Length of the relationship;
- ▶ The type of relationship; and
- ▶ The frequency of interaction between the persons involved in the relationship.
- ▶ For the purpose of this definition, dating violence includes, but is not limited to, sexual or physical abuse or the threat of such abuse.
- ▶ Dating violence does not include acts covered under the definition of domestic violence.

Stalking: Engaging in a course of conduct directed at a specific person that would cause a reasonable person to

- ▶ Fear for his or her safety or the safety of others; or
- ▶ Suffer substantial emotional distress.

For the purposes of this definition:

- ▶ Course of conduct means two or more acts, including, but not limited to, acts in which the stalker directly, indirectly, or through third parties, by any action, method, device, or means, follows, monitors, observes, surveils, threatens, or communicates to or about a person, or interferes with a person's property.



- ▶ Reasonable person means a reasonable person under similar circumstances and with similar identities to the victim.
- ▶ Substantial emotional distress means significant mental suffering or anguish that may, but does not necessarily, require medical or other professional treatment or counseling.

Consent: Consent is an informed decision, freely given, made through mutually understandable words or actions that indicate a willingness to participate in mutually agreed upon sexual activity.

Consent cannot be given by an individual who is:

- ▶ Asleep
- ▶ Unconscious
- ▶ Mentally or physically incapacitated, either through the effect of drugs or alcohol or for any other reason
- ▶ Under duress, threat, coercion, or force

Past consent does not imply future consent. Silence or an absence of resistance does not imply consent. Consent can be withdrawn at any time.

SLCC uses the “affirmative consent” standard, known colloquially as “yes means yes.” The burden rests on the person initiating sex to obtain a “yes,” rather than on the intended partner to convey a “no.” Failure to obtain affirmative consent in the course of sexual activity may result in findings of merit to a complaint of sexual assault/rape.

Education and Prevention Programming

SLCC engages in comprehensive educational programming to prevent domestic violence, dating violence, sexual assault and stalking. Educational programming consists of primary prevention and awareness programs for all incoming students and new employees and

ongoing awareness and prevention campaigns for students, faculty, and staff that:

- ▶ Identifies domestic violence, dating violence, sexual assault, and stalking as prohibited conduct.
- ▶ Defines what behavior constitutes domestic violence, dating violence, sexual assault, and stalking.
- ▶ Defines what behavior and actions constitute consent to sexual activity in the State of Utah.
- ▶ Provides safe and positive options for bystander intervention that may be carried out by an individual to prevent harm or intervene when there is a risk of domestic violence, dating violence, sexual assault, or stalking against a person other than the bystander.
- ▶ Provides information on risk reduction so that students may recognize warning signs of abusive behavior and how to avoid potential attacks.
- ▶ Provides an overview of information contained in the Annual Security Report (ASR) in compliance with the Clery Act.

Awareness Programs are community-wide or audience-specific programming, initiatives, and strategies that increase audience knowledge and share information and resources to prevent violence, promote safety, and reduce perpetration.

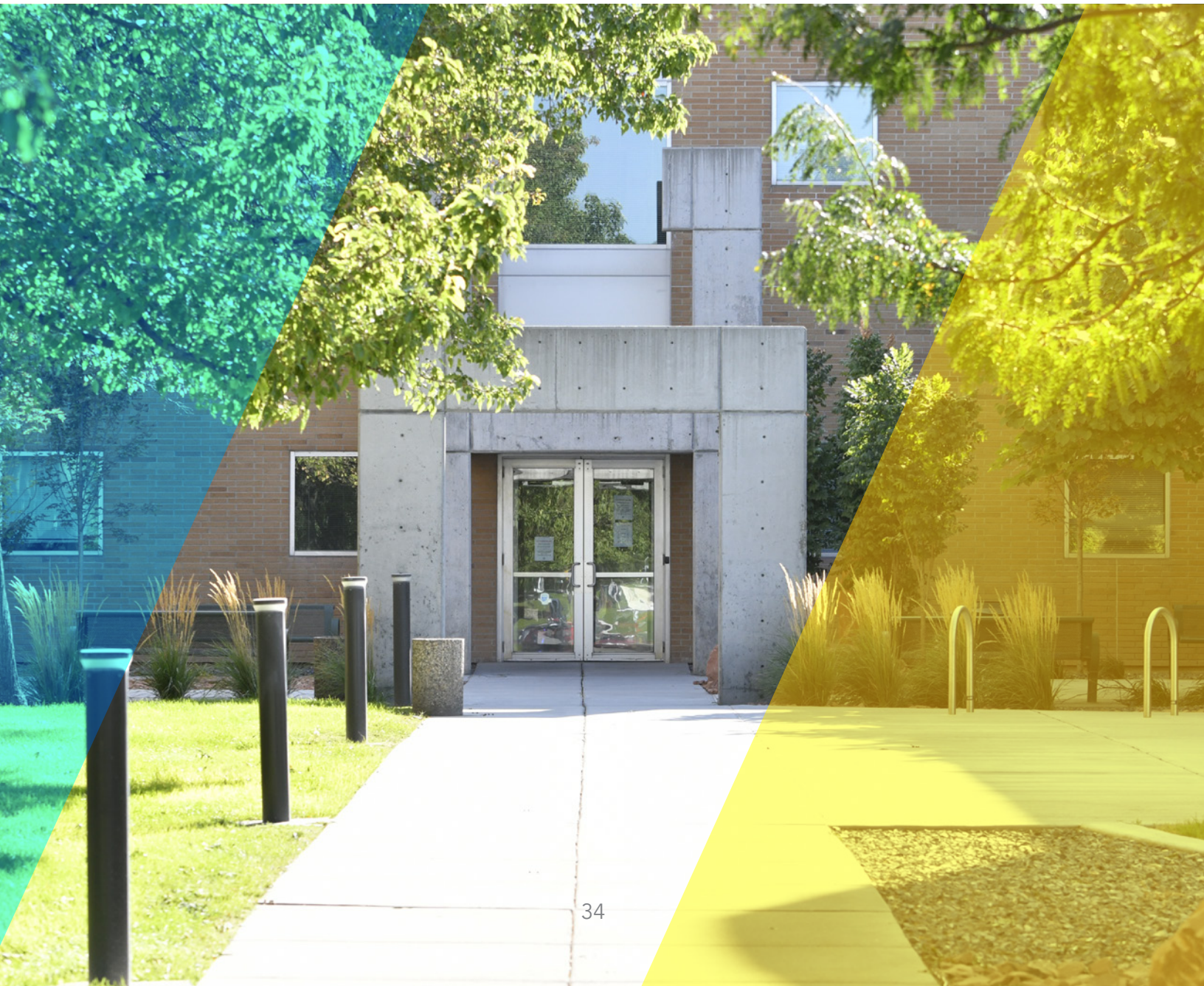
Bystander intervention means safe and positive options that may be carried out by an individual or individuals to prevent harm or intervene when there is a risk of dating violence, domestic violence, sexual assault, or stalking. Bystander intervention includes recognizing situations of potential harm, understanding institutional structures and cultural conditions that facilitate violence, overcoming barriers to intervening, identifying safe and effective intervention options, and taking action to intervene.

Ongoing prevention and awareness campaigns means programming, initiatives, and strategies that are sustained over time and focus on increasing understanding of topics relevant to and skills for addressing dating violence, domestic violence, sexual assault, and stalking, using a range of strategies with audiences throughout the institution.

Primary prevention programs means programming, initiatives, and strategies informed by research or assessed for value, effectiveness, or outcome that are intended to stop dating violence, domestic violence, sexual assault, and stalking before they occur through the

promotion of positive and healthy behaviors that foster healthy, mutually respectful relationships and sexuality, encourage safe bystander intervention, and seek to change behavior and social norms in healthy and safe directions.

Risk reduction means options designed to decrease perpetration and bystander inaction, and to increase empowerment for victims in order to promote safety and to help individuals and communities address conditions that facilitate violence.



SLCC offered the following primary prevention and awareness programs in 2023:

NAME OF PROGRAM	DATE HELD	LOCATION	PROHIBITED BEHAVIOR COVERED
Accessibility & Disability Services Title IX Training	June 7, 2023	Taylorsville Redwood Campus/Hybrid	DoV, DaV, Sa, S
Faculty Title IX Training	June 15, 2023	Virtual	DoV, DaV, Sa, S
People & Workplace Culture Title IX Training	June 28, 2023	Taylorsville Redwood Campus	DoV, DaV, Sa, S
New Faculty Orientation	August 16, 2023	Taylorsville Redwood Campus	DoV, DaV, SA, S
Student Leadership Conference	August 17, 2023	Taylorsville Redwood Campus	DoV, DaV, SA, S
School of Health Sciences Convocation	August 21, 2023	Taylorsville Redwood Campus	DoV, DaV, SA, S
Club Conference	September 15, 2024	Taylorsville Redwood Campus	DoV, DaV, SA, S
Dean of Students Leadership Team	September 29, 2023	Herriman Campus	DoV, DaV, SA, S
Faculty Association Meeting	November 10, 2023	Taylorsville Redwood Campus	DoV, DaV, SA, S
Supervisor Guidance Meeting	December 6, 2023	Taylorsville Redwood Campus/Hybrid	DoV, DaV, Sa, S
Bruin Beginnings Training	October 1, 2023 October 16, 2023 November 1, 2023 November 18, 2023 December 2, 2023 December 16, 2023	Taylorsville Redwood Campus	DoV, DaV, SA, S

CRIME STATISTICS

The following charts reflect the number of reported crimes on campus, listed separately for the Taylorsville Redwood, South City, Jordan, Miller, West Valley Center and other sites, for the most recent three calendar years. Arrests occurred on campus or in the immediate surrounding area (Clery Geography).

TAYLORSVILLE REDWOOD CAMPUS

Clery Offenses

	On-Campus (Includes Residence Halls)			Non-Campus			Public Property			Unfounded Crimes		
	2021	2022	2023	2021	2022	2023	2021	2022	2023	2021	2022	2023
Murder	0	0	0	0	0	0	0	0	0	0	0	0
Manslaughter by Negligence	0	0	0	0	0	0	0	0	0	0	0	0
Rape	0	0	0	0	0	0	0	0	0	0	0	0
Fondling	1	0	0	0	0	2	0	0	0	0	0	0
Incest	0	0	0	0	0	0	0	0	0	0	0	0
Statutory Rape	0	0	0	0	0	0	0	0	0	0	0	0
Robbery	0	1	0	0	0	0	0	0	0	0	0	0
Aggravated Assault	0	0	1	0	0	0	0	0	0	0	0	0
Burglary	0	0	0	0	0	0	0	0	0	0	0	0
Motor Vehicle Theft	0	0	3	0	0	0	0	0	0	0	0	0
Arson	0	0	0	0	0	0	0	0	0	0	0	0

Hate Crimes

	On-Campus (Includes Residence Halls)			Non-Campus			Public Property			Unfounded Crimes		
	2021	2022	2023	2021	2022	2023	2021	2022	2023	2021	2022	2023
Race	1	1	0	0	0	0	0	0	0	0	0	0
Gender	0	0	0	0	0	0	0	0	0	0	0	0
Gender Identity	0	0	0	0	0	0	0	0	0	0	0	0
Religion	0	1	0	0	0	0	0	0	0	0	0	0
Sexual Orientation	0	0	0	0	0	0	0	0	0	0	1	0
Ethnicity	0	0	0	0	0	0	0	0	0	0	0	0
National Origin	0	0	0	0	0	0	0	0	0	0	0	0
Disability	0	0	0	0	0	0	0	0	0	0	0	0

TAYLORSVILLE REDWOOD CAMPUS

VAWA Offenses

	On-Campus (Includes Residence Halls)			Non-Campus			Public Property			Unfounded Crimes		
	2021	2022	2023	2021	2022	2023	2021	2022	2023	2021	2022	2023
Domestic Violence	0	1	1	0	0	0	0	0	0	0	0	0
Dating Violence	0	0	0	0	0	0	0	0	0	0	0	0
Stalking	0	2	2	0	0	0	0	0	0	0	0	0

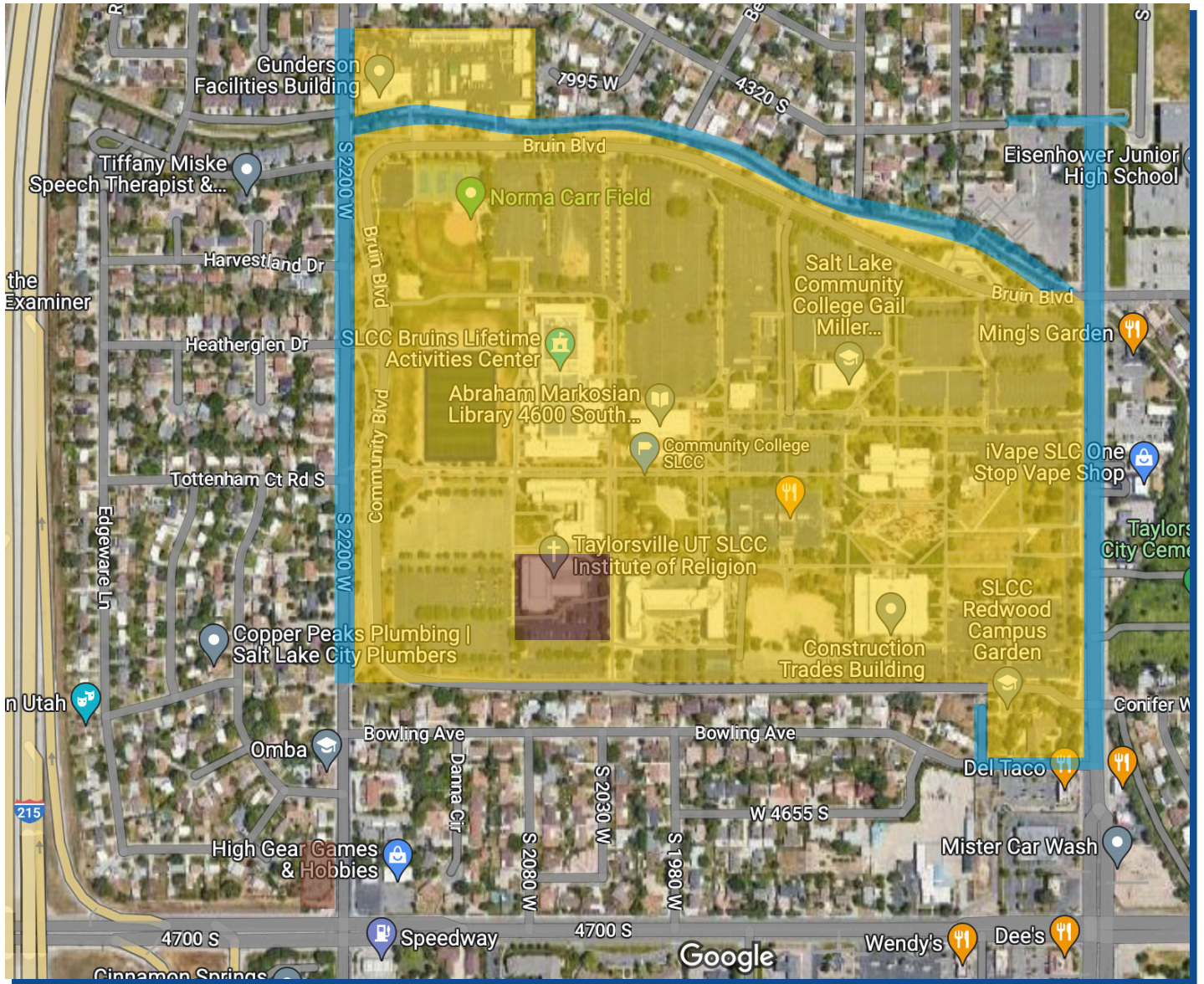
Arrests

	On-Campus (Includes Residence Halls)			Non-Campus			Public Property			Unfounded Crimes		
	2021	2022	2023	2021	2022	2023	2021	2022	2023	2021	2022	2023
Liquor Law Violations	0	0	1	0	0	0	0	0	0	0	0	0
Drug Law Violations	2	2	1	0	0	0	2	0	0	0	0	0
Weapons Law Violations	0	0	0	0	0	0	0	0	0	0	0	0

Referrals for Disciplinary Action

	On-Campus (Includes Residence Halls)			Non-Campus			Public Property			Unfounded Crimes		
	2021	2022	2023	2021	2022	2023	2021	2022	2023	2021	2022	2023
Liquor Law Violations	0	0	0	0	0	0	0	0	0	0	0	0
Drug Law Violations	0	0	0	0	0	0	0	0	0	0	0	0
Weapons Law Violations	0	0	0	0	0	0	0	0	0	0	0	0

SLCC TAYLORSVILLE CAMPUS CLERY MAP



On-Campus



Non-Campus



Public Property

SOUTH CITY CAMPUS

Clery Offenses

	On-Campus (Includes Residence Halls)			Non-Campus			Public Property			Unfounded Crimes		
	2021	2022	2023	2021	2022	2023	2021	2022	2023	2021	2022	2023
Murder	0	0	0	0	0	0	0	0	0	0	0	0
Manslaughter by Negligence	0	0	0	0	0	0	0	0	0	0	0	0
Rape	0	0	0	0	0	0	0	0	0	0	0	0
Fondling	0	0	0	0	0	0	0	0	0	0	0	0
Incest	0	0	0	0	0	0	0	0	0	0	0	0
Statutory Rape	0	0	0	0	0	0	0	0	0	0	0	0
Robbery	0	0	0	0	0	0	0	0	0	0	0	0
Aggravated Assault	0	0	0	0	0	0	0	1	0	0	0	0
Burglary	0	0	0	0	0	0	0	0	0	0	0	0
Motor Vehicle Theft	0	1	2	0	0	0	0	0	0	1	0	1
Arson	0	2	0	0	0	0	0	0	0	0	0	0

Hate Crimes

	On-Campus (Includes Residence Halls)			Non-Campus			Public Property			Unfounded Crimes		
	2021	2022	2023	2021	2022	2023	2021	2022	2023	2021	2022	2023
Race	0	0	0	0	0	0	0	0	0	0	0	0
Gender	0	0	0	0	0	0	0	0	0	0	0	0
Gender Identity	1	0	0	0	0	0	0	0	0	0	0	0
Religion	0	0	0	0	0	0	0	0	0	0	0	0
Sexual Orientation	1	0	0	0	0	0	0	0	0	0	0	0
Ethnicity	0	0	0	0	0	0	0	0	0	0	0	0
National Origin	0	0	0	0	0	0	0	0	0	0	0	0
Disability	0	0	0	0	0	0	0	0	0	0	0	0

SOUTH CITY CAMPUS

VAWA Offenses

	On-Campus (Includes Residence Halls)			Non-Campus			Public Property			Unfounded Crimes		
	2021	2022	2023	2021	2022	2023	2021	2022	2023	2021	2022	2023
Domestic Violence	0	0	0	0	0	0	0	0	0	0	0	0
Dating Violence	0	0	0	0	0	0	0	0	0	0	0	0
Stalking	1	0	0	0	0	0	0	0	0	0	0	0

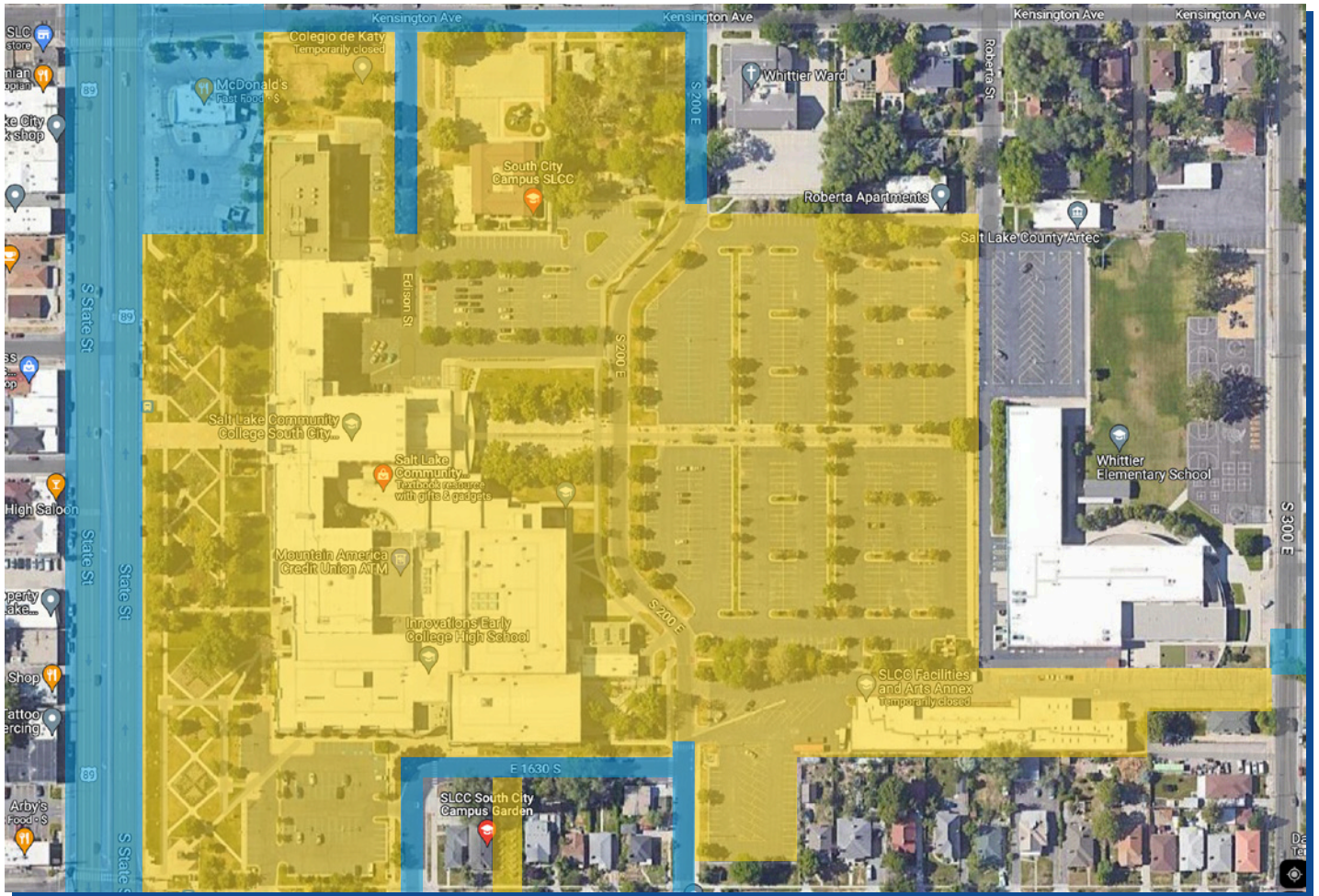
Arrests

	On-Campus (Includes Residence Halls)			Non-Campus			Public Property			Unfounded Crimes		
	2021	2022	2023	2021	2022	2023	2021	2022	2023	2021	2022	2023
Liquor Law Violations	1	0	1	0	0	0	0	0	0	0	0	0
Drug Law Violations	5	11	16	0	0	0	0	0	3	0	0	0
Weapons Law Violations	0	0	0	0	0	0	0	0	1	0	0	0

Referrals for Disciplinary Action

	On-Campus (Includes Residence Halls)			Non-Campus			Public Property			Unfounded Crimes		
	2021	2022	2023	2021	2022	2023	2021	2022	2023	2021	2022	2023
Liquor Law Violations	0	0	0	0	0	0	0	0	0	0	0	0
Drug Law Violations	0	0	0	0	0	0	0	0	0	0	0	0
Weapons Law Violations	0	0	0	0	0	0	0	0	0	0	0	0

SLCC SOUTH CITY CAMPUS CLERY MAP



On-Campus



Non-Campus



Public Property

JORDAN CAMPUS

Clery Offenses

	On-Campus (Includes Residence Halls)			Non-Campus			Public Property			Unfounded Crimes		
	2021	2022	2023	2021	2022	2023	2021	2022	2023	2021	2022	2023
Murder	0	0	0	0	0	0	0	0	0	0	0	0
Manslaughter by Negligence	0	0	0	0	0	0	0	0	0	0	0	0
Rape	0	0	0	0	0	0	0	0	0	0	0	0
Fondling	0	0	0	0	0	0	0	0	0	0	0	0
Incest	0	0	0	0	0	0	0	0	0	0	0	0
Statutory Rape	0	0	0	0	0	0	0	0	0	0	0	0
Robbery	0	0	0	0	0	0	0	0	0	0	0	0
Aggravated Assault	0	0	0	0	0	0	0	0	0	0	0	0
Burglary	0	0	0	0	0	0	0	0	0	0	0	0
Motor Vehicle Theft	0	0	0	0	0	0	0	0	0	0	0	0
Arson	0	1	0	0	0	0	0	0	0	0	0	0

Hate Crimes

	On-Campus (Includes Residence Halls)			Non-Campus			Public Property			Unfounded Crimes		
	2021	2022	2023	2021	2022	2023	2021	2022	2023	2021	2022	2023
Race	0	0	0	0	0	0	0	0	0	0	0	0
Gender	0	0	0	0	0	0	0	0	0	0	0	0
Gender Identity	0	0	0	0	0	0	0	0	0	0	0	0
Religion	0	0	0	0	0	0	0	0	0	0	0	0
Sexual Orientation	0	0	0	0	0	0	0	0	0	0	0	0
Ethnicity	0	0	0	0	0	0	0	0	0	0	0	0
National Origin	0	0	0	0	0	0	0	0	0	0	0	0
Disability	0	0	0	0	0	0	0	0	0	0	0	0

JORDAN CAMPUS

VAWA Offenses

	On-Campus (Includes Residence Halls)			Non-Campus			Public Property			Unfounded Crimes		
	2021	2022	2023	2021	2022	2023	2021	2022	2023	2021	2022	2023
Domestic Violence	1	0	0	0	0	0	0	0	0	0	0	0
Dating Violence	0	0	0	0	0	0	0	0	0	0	0	0
Stalking	1	1	1	0	0	0	0	0	0	0	0	0

Arrests

	On-Campus (Includes Residence Halls)			Non-Campus			Public Property			Unfounded Crimes		
	2021	2022	2023	2021	2022	2023	2021	2022	2023	2021	2022	2023
Liquor Law Violations	0	0	0	0	0	0	0	0	0	0	0	0
Drug Law Violations	1	1	0	0	0	0	0	0	0	0	0	0
Weapons Law Violations	0	0	0	0	0	0	0	0	0	0	0	0

Referrals for Disciplinary Action

	On-Campus (Includes Residence Halls)			Non-Campus			Public Property			Unfounded Crimes		
	2021	2022	2023	2021	2022	2023	2021	2022	2023	2021	2022	2023
Liquor Law Violations	0	2	0	0	0	0	0	0	0	0	0	0
Drug Law Violations	0	0	0	0	0	0	0	0	0	0	0	0
Weapons Law Violations	0	0	0	0	0	0	0	0	0	0	0	0

SLCC JORDAN CAMPUS CLERY MAP



- On-Campus**
- Non-Campus**
- Public Property**

MILLER CAMPUS

Clery Offenses

	On-Campus (Includes Residence Halls)			Non-Campus			Public Property			Unfounded Crimes		
	2021	2022	2023	2021	2022	2023	2021	2022	2023	2021	2022	2023
Murder	0	0	0	0	0	0	0	0	0	0	0	0
Manslaughter by Negligence	0	0	0	0	0	0	0	0	0	0	0	0
Rape	0	0	0	0	0	0	0	0	0	0	0	0
Fondling	1	0	0	0	0	0	0	0	0	0	0	0
Incest	0	0	0	0	0	0	0	0	0	0	0	0
Statutory Rape	0	0	0	0	0	0	0	0	0	0	0	0
Robbery	0	0	0	0	0	0	0	0	0	0	0	0
Aggravated Assault	0	0	0	0	0	0	0	0	0	0	0	0
Burglary	0	0	1	0	0	0	0	0	0	0	0	0
Motor Vehicle Theft	0	0	0	0	0	0	0	0	0	0	0	0
Arson	0	0	0	0	0	0	0	0	0	0	0	0

Hate Crimes

	On-Campus (Includes Residence Halls)			Non-Campus			Public Property			Unfounded Crimes		
	2021	2022	2023	2021	2022	2023	2021	2022	2023	2021	2022	2023
Race	0	0	0	0	0	0	0	0	0	0	0	0
Gender	0	0	0	0	0	0	0	0	0	0	0	0
Gender Identity	0	0	0	0	0	0	0	0	0	0	0	0
Religion	0	0	0	0	0	0	0	0	0	0	0	0
Sexual Orientation	0	0	0	0	0	0	0	0	0	0	0	0
Ethnicity	0	0	0	0	0	0	0	0	0	0	0	0
National Origin	0	0	0	0	0	0	0	0	0	0	0	0
Disability	0	0	0	0	0	0	0	0	0	0	0	0

MILLER CAMPUS

VAWA Offenses

	On-Campus (Includes Residence Halls)			Non-Campus			Public Property			Unfounded Crimes		
	2021	2022	2023	2021	2022	2023	2021	2022	2023	2021	2022	2023
Domestic Violence	0	0	0	0	0	0	0	0	0	0	0	0
Dating Violence	0	0	0	0	0	0	0	0	0	0	0	0
Stalking	0	0	0	0	0	0	0	0	0	0	0	0

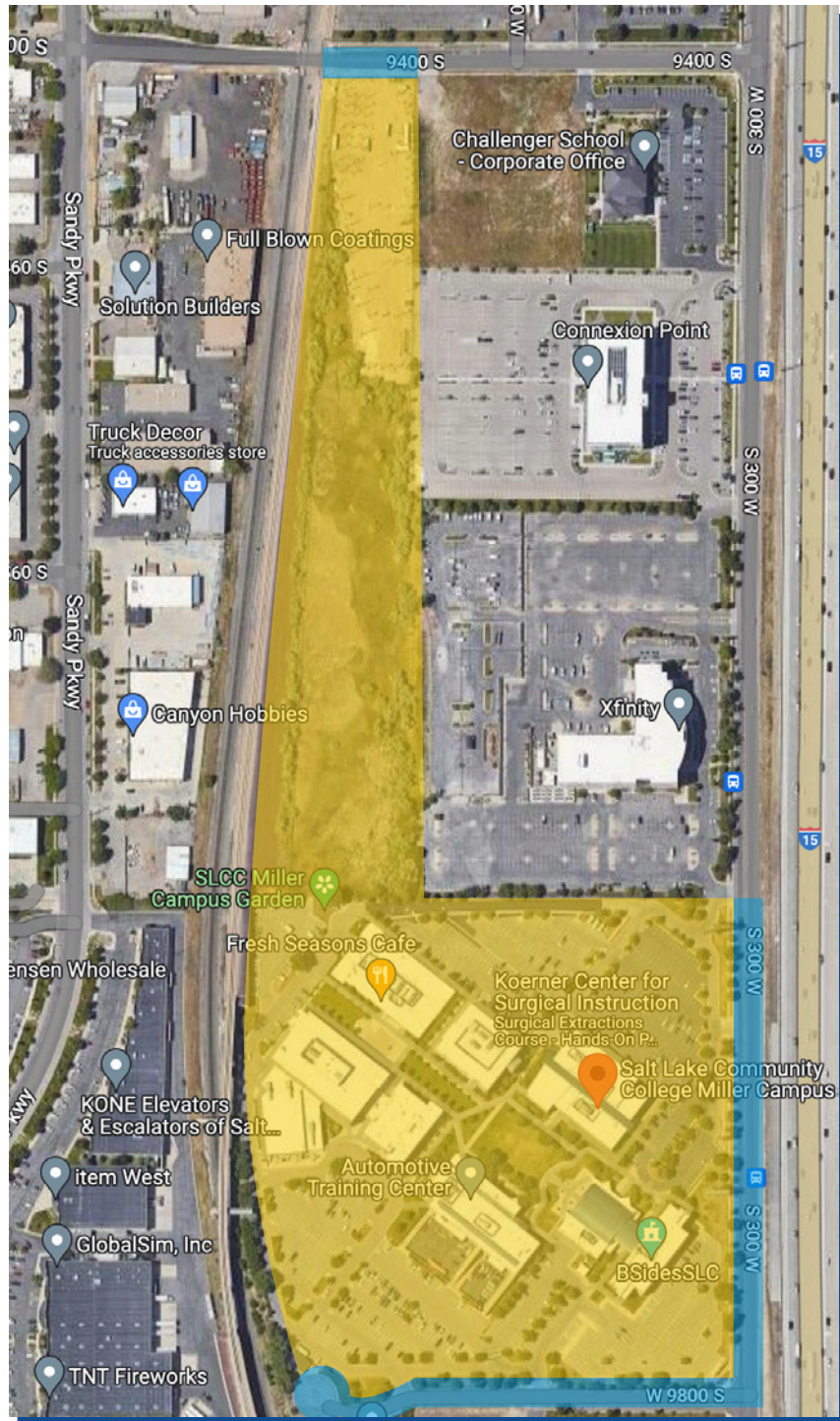
Arrests

	On-Campus (Includes Residence Halls)			Non-Campus			Public Property			Unfounded Crimes		
	2021	2022	2023	2021	2022	2023	2021	2022	2023	2021	2022	2023
Liquor Law Violations	0	0	0	0	0	0	0	0	0	0	0	0
Drug Law Violations	0	1	0	0	0	0	0	0	0	0	0	0
Weapons Law Violations	0	0	0	0	0	0	0	0	0	0	0	0

Referrals for Disciplinary Action

	On-Campus (Includes Residence Halls)			Non-Campus			Public Property			Unfounded Crimes		
	2021	2022	2023	2021	2022	2023	2021	2022	2023	2021	2022	2023
Liquor Law Violations	0	0	0	0	0	0	0	0	0	0	0	0
Drug Law Violations	0	0	0	0	0	0	0	0	0	0	0	0
Weapons Law Violations	0	0	0	0	0	0	0	0	0	0	0	0

SLCC MILLER CAMPUS CLERY MAP



LIBRARY SQUARE CAMPUS

Clery Offenses

	On-Campus (Includes Residence Halls)			Non-Campus			Public Property			Unfounded Crimes		
	2021	2022	2023	2021	2022	2023	2021	2022	2023	2021	2022	2023
Murder	0	0	0	0	0	0	0	0	0	0	0	0
Manslaughter by Negligence	0	0	0	0	0	0	0	0	0	0	0	0
Rape	0	0	0	0	0	0	0	0	0	0	0	0
Fondling	0	0	0	0	0	0	0	0	0	0	0	0
Incest	0	0	0	0	0	0	0	0	0	0	0	0
Statutory Rape	0	0	0	0	0	0	0	0	0	0	0	0
Robbery	0	0	0	0	0	0	0	0	0	0	0	0
Aggravated Assault	0	0	0	0	0	0	0	0	1	0	0	0
Burglary	0	0	0	2	0	0	0	0	0	0	0	0
Motor Vehicle Theft	0	0	0	0	0	0	0	0	0	0	0	0
Arson	0	0	0	0	0	0	0	0	0	0	0	0

Hate Crimes

	On-Campus (Includes Residence Halls)			Non-Campus			Public Property			Unfounded Crimes		
	2021	2022	2023	2021	2022	2023	2021	2022	2023	2021	2022	2023
Race	0	0	0	0	0	0	0	0	0	0	0	0
Gender	0	0	0	0	0	0	0	0	0	0	0	0
Gender Identity	0	0	0	0	0	0	0	0	0	0	0	0
Religion	0	0	0	0	0	0	0	0	0	0	0	0
Sexual Orientation	0	0	0	0	0	0	0	0	0	0	0	0
Ethnicity	0	0	0	0	0	0	0	0	0	0	0	0
National Origin	0	0	0	0	0	0	0	0	0	0	0	0
Disability	0	0	0	0	0	0	0	0	0	0	0	0

LIBRARY SQUARE CAMPUS

VAWA Offenses

	On-Campus (Includes Residence Halls)			Non-Campus			Public Property			Unfounded Crimes		
	2021	2022	2023	2021	2022	2023	2021	2022	2023	2021	2022	2023
Domestic Violence	0	0	0	0	0	0	0	0	0	0	0	0
Dating Violence	0	0	0	0	0	0	0	0	0	0	0	0
Stalking	0	0	0	0	0	0	0	0	0	0	0	0

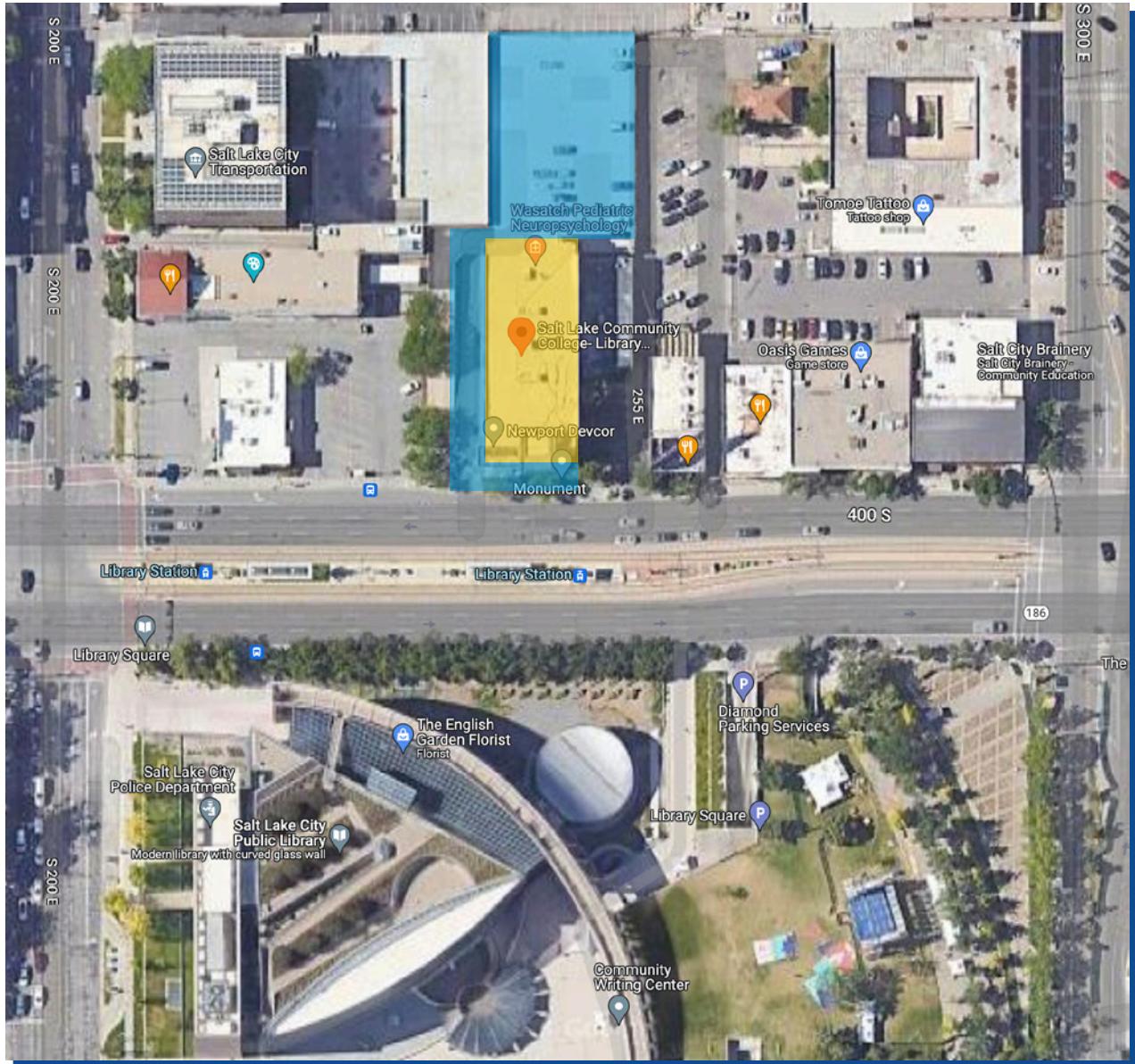
Arrests

	On-Campus (Includes Residence Halls)			Non-Campus			Public Property			Unfounded Crimes		
	2021	2022	2023	2021	2022	2023	2021	2022	2023	2021	2022	2023
Liquor Law Violations	0	0	0	0	0	0	0	0	0	0	0	0
Drug Law Violations	0	0	0	0	0	0	0	0	0	0	0	0
Weapons Law Violations	0	0	0	0	0	0	0	0	0	0	0	0

Referrals for Disciplinary Action

	On-Campus (Includes Residence Halls)			Non-Campus			Public Property			Unfounded Crimes		
	2021	2022	2023	2021	2022	2023	2021	2022	2023	2021	2022	2023
Liquor Law Violations	0	0	0	0	0	0	0	0	0	0	0	0
Drug Law Violations	0	0	0	0	0	0	0	0	0	0	0	0
Weapons Law Violations	0	0	0	0	0	0	0	0	0	0	0	0

SLCC LIBRARY SQUARE CAMPUS CLERY MAP



On-Campus



Non-Campus



Public Property

WESTPOINTE CENTER/AVIATION CENTER

Clery Offenses

	On-Campus (Includes Residence Halls)			Non-Campus			Public Property			Unfounded Crimes		
	2021	2022	2023	2021	2022	2023	2021	2022	2023	2021	2022	2023
Murder	0	0	0	0	0	0	0	0	0	0	0	0
Manslaughter by Negligence	0	0	0	0	0	0	0	0	0	0	0	0
Rape	0	0	0	0	0	0	0	0	0	0	0	0
Fondling	0	0	0	0	0	0	0	0	0	0	0	0
Incest	0	0	0	0	0	0	0	0	0	0	0	0
Statutory Rape	0	0	0	0	0	0	0	0	0	0	0	0
Robbery	0	0	0	0	0	0	0	0	0	0	0	0
Aggravated Assault	0	0	0	0	0	0	0	0	0	0	0	0
Burglary	0	0	0	0	0	0	0	0	0	0	0	0
Motor Vehicle Theft	0	0	0	0	0	0	0	0	0	0	0	0
Arson	0	0	0	0	0	0	0	0	0	0	0	0

Hate Crimes

	On-Campus (Includes Residence Halls)			Non-Campus			Public Property			Unfounded Crimes		
	2021	2022	2023	2021	2022	2023	2021	2022	2023	2021	2022	2023
Race	0	0	0	0	0	0	0	0	0	0	0	0
Gender	0	0	0	0	0	0	0	0	0	0	0	0
Gender Identity	0	0	0	0	0	0	0	0	0	0	0	0
Religion	0	0	0	0	0	0	0	0	0	0	0	0
Sexual Orientation	0	0	0	0	0	0	0	0	0	0	0	0
Ethnicity	0	0	0	0	0	0	0	0	0	0	0	0
National Origin	0	0	0	0	0	0	0	0	0	0	0	0
Disability	0	0	0	0	0	0	0	0	0	0	0	0

WESTPOINTE CENTER/AVIATION CENTER

VAWA Offenses

	On-Campus (Includes Residence Halls)			Non-Campus			Public Property			Unfounded Crimes		
	2021	2022	2023	2021	2022	2023	2021	2022	2023	2021	2022	2023
Domestic Violence	0	0	0	0	0	0	0	0	0	0	0	0
Dating Violence	0	0	0	0	0	0	0	0	0	0	0	0
Stalking	0	0	0	0	0	0	0	0	0	0	0	0

Arrests

	On-Campus (Includes Residence Halls)			Non-Campus			Public Property			Unfounded Crimes		
	2021	2022	2023	2021	2022	2023	2021	2022	2023	2021	2022	2023
Liquor Law Violations	0	0	0	0	0	0	0	0	0	0	0	0
Drug Law Violations	0	0	0	0	0	0	0	0	0	0	0	0
Weapons Law Violations	0	0	0	0	0	0	0	0	0	0	0	0

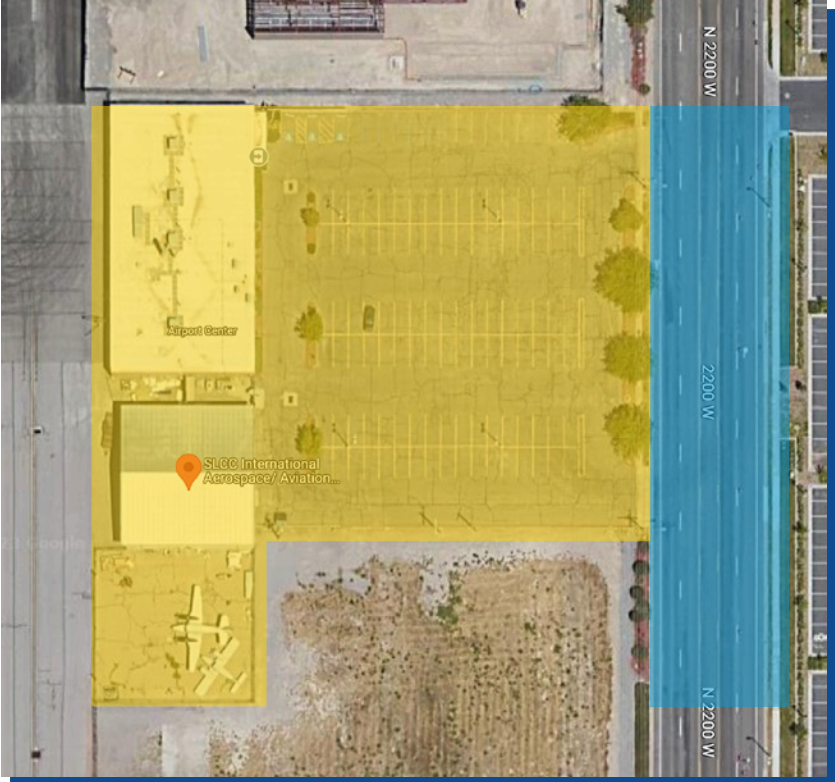
Referrals for Disciplinary Action

	On-Campus (Includes Residence Halls)			Non-Campus			Public Property			Unfounded Crimes		
	2021	2022	2023	2021	2022	2023	2021	2022	2023	2021	2022	2023
Liquor Law Violations	0	0	0	0	0	0	0	0	0	0	0	0
Drug Law Violations	0	0	0	0	0	0	0	0	0	0	0	0
Weapons Law Violations	0	0	0	0	0	0	0	0	0	0	0	0

SLCC WESTPOINTE CENTER/AVIATION CENTER CLERY MAP



- On-Campus
- Non-Campus
- Public Property



WEST VALLEY CENTER

Clery Offenses

	On-Campus (Includes Residence Halls)			Non-Campus			Public Property			Unfounded Crimes		
	2021	2022	2023	2021	2022	2023	2021	2022	2023	2021	2022	2023
Murder	0	0	0	0	0	0	0	0	0	0	0	0
Manslaughter by Negligence	0	0	0	0	0	0	0	0	0	0	0	0
Rape	0	0	0	0	0	0	0	0	0	0	0	0
Fondling	0	0	0	0	0	0	0	0	0	0	0	0
Incest	0	0	0	0	0	0	0	0	0	0	0	0
Statutory Rape	0	0	0	0	0	0	0	0	0	0	0	0
Robbery	0	0	0	0	0	0	0	0	0	0	0	0
Aggravated Assault	0	0	0	0	0	0	0	0	0	0	0	0
Burglary	0	0	0	0	0	0	0	0	0	0	0	0
Motor Vehicle Theft	0	0	0	0	0	0	0	0	0	0	0	0
Arson	0	0	0	0	0	0	0	0	0	0	0	0

Hate Crimes

	On-Campus (Includes Residence Halls)			Non-Campus			Public Property			Unfounded Crimes		
	2021	2022	2023	2021	2022	2023	2021	2022	2023	2021	2022	2023
Race	0	0	0	0	0	0	0	0	0	0	0	0
Gender	0	0	0	0	0	0	0	0	0	0	0	0
Gender Identity	0	0	0	0	0	0	0	0	0	0	0	0
Religion	0	0	0	0	0	0	0	0	0	0	0	0
Sexual Orientation	0	0	0	0	0	0	0	0	0	0	0	0
Ethnicity	0	0	0	0	0	0	0	0	0	0	0	0
National Origin	0	0	0	0	0	0	0	0	0	0	0	0
Disability	0	0	0	0	0	0	0	0	0	0	0	0

WEST VALLEY CENTER

VAWA Offenses

	On-Campus (Includes Residence Halls)			Non-Campus			Public Property			Unfounded Crimes		
	2021	2022	2023	2021	2022	2023	2021	2022	2023	2021	2022	2023
Domestic Violence	0	0	0	0	0	0	0	0	0	0	0	0
Dating Violence	0	0	0	0	0	0	0	0	0	0	0	0
Stalking	0	0	0	0	0	0	0	0	0	0	0	0

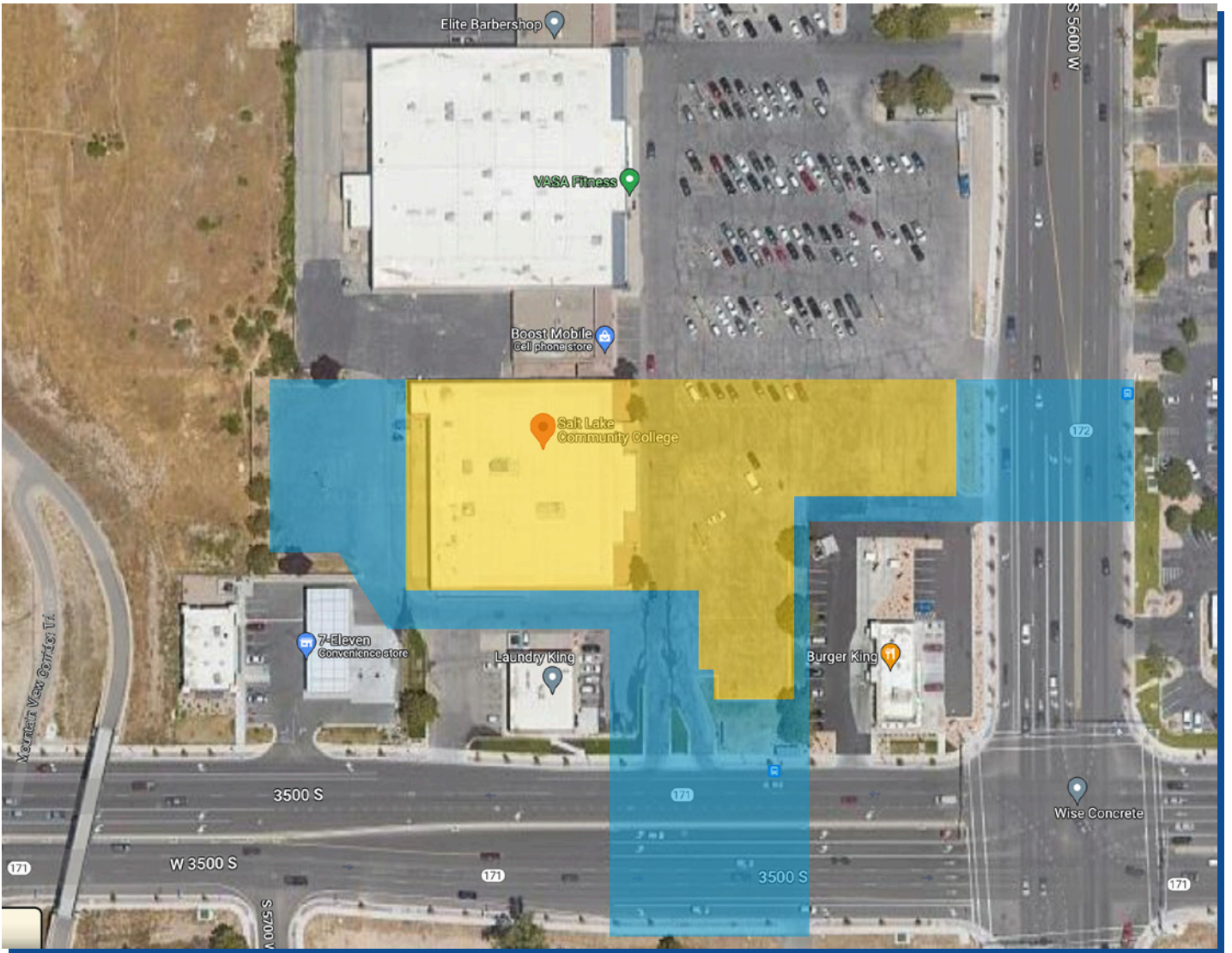
Arrests

	On-Campus (Includes Residence Halls)			Non-Campus			Public Property			Unfounded Crimes		
	2021	2022	2023	2021	2022	2023	2021	2022	2023	2021	2022	2023
Liquor Law Violations	0	0	0	0	0	0	0	0	0	0	0	0
Drug Law Violations	0	0	0	0	0	0	0	0	0	0	0	0
Weapons Law Violations	0	0	0	0	0	0	0	0	0	0	0	0

Referrals for Disciplinary Action

	On-Campus (Includes Residence Halls)			Non-Campus			Public Property			Unfounded Crimes		
	2021	2022	2023	2021	2022	2023	2021	2022	2023	2021	2022	2023
Liquor Law Violations	0	0	0	0	0	0	0	0	0	0	0	0
Drug Law Violations	0	0	0	0	0	0	0	0	0	0	0	0
Weapons Law Violations	0	0	0	0	0	0	0	0	0	0	0	0

SLCC WEST VALLEY CENTER CLERY MAP



On-Campus



Non-Campus



Public Property

HERRIMAN CAMPUS

Clery Offenses

	On-Campus (Includes Residence Halls)			Non-Campus			Public Property			Unfounded Crimes		
	2021	2022	2023	2021	2022	2023	2021	2022	2023	2021	2022	2023
Murder	0	0	0	0	0	0	0	0	0	0	0	0
Manslaughter by Negligence	0	0	0	0	0	0	0	0	0	0	0	0
Rape	0	0	0	0	0	0	0	0	0	0	0	0
Fondling	0	0	0	0	0	0	0	0	0	0	0	0
Incest	0	0	0	0	0	0	0	0	0	0	0	0
Statutory Rape	0	0	0	0	0	0	0	0	0	0	0	0
Robbery	0	0	0	0	0	0	0	0	0	0	0	0
Aggravated Assault	0	0	0	0	0	0	0	0	0	0	0	0
Burglary	0	0	0	0	0	0	0	0	0	0	0	0
Motor Vehicle Theft	0	0	0	0	0	0	0	0	0	0	0	0
Arson	0	0	0	0	0	0	0	0	0	0	0	0

Hate Crimes

	On-Campus (Includes Residence Halls)			Non-Campus			Public Property			Unfounded Crimes		
	2021	2022	2023	2021	2022	2023	2021	2022	2023	2021	2022	2023
Race	0	0	0	0	0	0	0	0	0	0	0	0
Gender	0	0	0	0	0	0	0	0	0	0	0	0
Gender Identity	0	0	0	0	0	0	0	0	0	0	0	0
Religion	0	0	0	0	0	0	0	0	0	0	0	0
Sexual Orientation	0	0	0	0	0	0	0	0	0	0	0	0
Ethnicity	0	0	0	0	0	0	0	0	0	0	0	0
National Origin	0	0	0	0	0	0	0	0	0	0	0	0
Disability	0	0	0	0	0	0	0	0	0	0	0	0

HERRIMAN CAMPUS

VAWA Offenses

	On-Campus (Includes Residence Halls)			Non-Campus			Public Property			Unfounded Crimes		
	2021	2022	2023	2021	2022	2023	2021	2022	2023	2021	2022	2023
Domestic Violence	0	0	0	0	0	0	0	0	0	0	0	0
Dating Violence	0	0	0	0	0	0	0	0	0	0	0	0
Stalking	0	0	0	0	0	0	0	0	0	0	0	0

Arrests

	On-Campus (Includes Residence Halls)			Non-Campus			Public Property			Unfounded Crimes		
	2021	2022	2023	2021	2022	2023	2021	2022	2023	2021	2022	2023
Liquor Law Violations	0	0	0	0	0	0	0	0	0	0	0	0
Drug Law Violations	0	0	0	0	0	0	0	0	0	0	0	0
Weapons Law Violations	0	0	0	0	0	0	0	0	0	0	0	0

Referrals for Disciplinary Action

	On-Campus (Includes Residence Halls)			Non-Campus			Public Property			Unfounded Crimes		
	2021	2022	2023	2021	2022	2023	2021	2022	2023	2021	2022	2023
Liquor Law Violations	0	0	0	0	0	0	0	0	0	0	0	0
Drug Law Violations	0	0	0	0	0	0	0	0	0	0	0	0
Weapons Law Violations	0	0	0	0	0	0	0	0	0	0	0	0

SLCC HERRIMAN CAMPUS CLERY MAP



On-Campus



Non-Campus



Public Property

LARCENY THEFT

CAMPUS	2021	2022	2023
Taylorsville Redwood	19	20	16
South City	8	6	9
Jordan	3	3	1
Miller	0	2	3
Library Square	1	0	0
Westpointe Center/Aviation Center	0	2	1
West Valley	0	0	0
Herriman	0	0	0

Although Larceny theft is not a Clery-required reportable crime, we still track thefts on our SLCC campuses. Many thefts happen because property is left unattended, or vehicles are left unlocked. Please remember to lock your vehicles and keep your valuables secure.

If you find lost property, turn it in to Lost and Found or SLCC Public Safety. Taking abandoned property is a crime and a violation of Utah State law (76-6-407: Theft of Lost, Mislaid, or Mistakenly Delivered Property).

Help keep our campus safe by securing your belongings and reporting lost items!

ON-CAMPUS SERVICES RELATING TO SECURITY AND SAFETY

Numerous services are available to inform students and employees about campus and personal security procedures. The departments to contact for these programs are included below:

SERVICE	TELEPHONE	LOCATION	DEPARTMENT
Emergencies Police	911	Refer to Contact Information	Refer to Contact Information
Parking Permits	801-957-4011	GFSB (RWD)	Parking Services
Safety Hazards	801-957-4033 801-957-3200	GFSB Annex 103	Facilities - Redwood Facilities - South City
Lost College Keys	801-957-4102 801-957-3200	GFSB (RWD) Annex 103 (SCC)	Key Office Facilities
Risk Management	801-957-4041	AAB 211	Risk Management
South Campus Information, Parking Permits	801-957-3407	1-061	Student Center Courtesy Desk
Health and Counseling Alcohol/Drug Prevention	801-957-4268	STC 035 (RWD) JSTC 160 (JC) 1-143 (SCC)	Center for Health and Counseling
Nurse Practitioner	801-957-4268 801-957-3323 801-957-6290	STC090 (RWD) 1-143 (SCC) JSTC 160 (JC)	Center for Health and Counseling
Life Threatening Emergencies	911 (all campus lines)	Refer to Contact Information	Refer to Contact Information

APPENDIX A: ONLINE REPORTING FORM



Campus Discrimination, Harassment, or Retaliation Reporting Form

This form may be used by any person to report an incident involving an alleged violation of discrimination, harassment, or retaliation by a student, staff or faculty member of the Academic Freedom, Professional Responsibility, and Tenure Policy, Anti-Discrimination and Harassment Policy, Employee Conduct Policy, SLCC Title IX Sexual Harassment Policy, or the Workplace Bullying Policy whether on their own behalf or on behalf of any person targeted by a member of the college community.

You may obtain more information on the above policies by clicking the following links:

- [Academic Freedom, Professional Responsibility, and Tenure Policy](#)
- [Anti-Discrimination and Harassment Policy](#)
- [Employee Conduct Policy](#)
- [Title IX Sexual Harassment Policy](#)
- [Workplace Bullying Policy](#)

Complainant Information

Please complete the following information.

[Enable additional features by logging in.](#)

Your full name:

Your position/title:

Your SLCC email address:

Reason for report *(Required)*:

Date of incident *(Required)*:

Time of incident:

Location of incident *(Required)*:

Specific location:

Involved Parties

Please list all involved including yourself as the Complainant and any witnesses.

Name	Select Role	S Number	Phone number
<input type="text"/>	<input type="text"/>	<input type="text"/>	<input type="text"/>
Email address	Home Address		
<input type="text"/>	<input type="text"/>		

[Add another party](#)

Questions

Type of Bias: Check all that apply. (Required)

- | | | |
|--|--|--|
| <input type="checkbox"/> Age (over 40) | <input type="checkbox"/> Gender Identity | <input type="checkbox"/> Retaliation |
| <input type="checkbox"/> Color | <input type="checkbox"/> GINA (genetics) | <input type="checkbox"/> Sexual Orientation |
| <input type="checkbox"/> Disability | <input type="checkbox"/> National Origin | <input type="checkbox"/> Veteran Status |
| <input type="checkbox"/> Ethnicity | <input type="checkbox"/> Race | <input type="checkbox"/> Not a protected class |
| <input type="checkbox"/> Gender | <input type="checkbox"/> Religion | |

Type of Incident: Check all that apply. (Required)

- | | | |
|---|--|--|
| <input type="checkbox"/> Bullying | <input type="checkbox"/> Offensive classroom comment | <input type="checkbox"/> Threat of physical attack |
| <input type="checkbox"/> Discrimination from campus office | <input type="checkbox"/> Offensive visual representation | <input type="checkbox"/> Vandalism |
| <input type="checkbox"/> Discrimination/policy from Faculty | <input type="checkbox"/> Phone harassment | <input type="checkbox"/> Verbal assault |
| <input type="checkbox"/> Email or internet message | <input type="checkbox"/> Physical attack | <input type="checkbox"/> Workplace Bullying |
| <input type="checkbox"/> Hazing | <input type="checkbox"/> Property damage/graffiti | <input type="checkbox"/> Written slur |
| <input type="checkbox"/> Inappropriate verbal comment | <input type="checkbox"/> Pursuit/chase | <input type="checkbox"/> Other |
| <input type="checkbox"/> Indecency/exposure | <input type="checkbox"/> Sexual assault | |
| <input type="checkbox"/> Intimidation | <input type="checkbox"/> Sexual harassment | |

On what SLCC Campus(es) did this incident occur? (Required)

- | | | |
|---|--------------------------------------|---|
| <input type="checkbox"/> Herriman Annex | <input type="checkbox"/> Meadowbrook | <input type="checkbox"/> Taylorsville Redwood |
| <input type="checkbox"/> Jordan | <input type="checkbox"/> Miller | <input type="checkbox"/> WestPointe |
| <input type="checkbox"/> Library Square | <input type="checkbox"/> South City | <input type="checkbox"/> West Valley |

Please provide a brief description of the event(s) that led to this complaint: (Required)

Have you reported this incident to anyone else at SLCC? (Required)

- Yes
 No

If you responded Yes above, please provide the names and departments you contacted:

If you have tried to resolve this through your supervisor, please explain the results:

I have read and understand the following: I affirm I have given the above information in good faith and it is true to the best of my knowledge. I understand at any time I have the right to file a complaint with an outside state/federal agency, Equal Employment Opportunity Commission, Utah Anti-Discrimination and Labor Division, or pursue a remedy in a Court of Law. I understand the EO Department is not an advocate for either party. The EO Department adheres to the processes prescribed in this policy, investigates when necessary, and safeguards the rights and due process of those involved. The SLCC EO Department, (801) 957-3850, will assist you if you have questions or concerns about the process or your employment rights. I understand all official communication will be through Bruin Mail or SLCC Mail. It is my responsibility to check Bruin Mail and SLCC Mail for updates on this case. (Required)

- By checking this box, you are signing this form electronically.

Supporting Documentation

Photos, video, email, and other supporting documents may be attached below. 5GB maximum total size.

Attachments require time to upload, so please be patient after submitting this form.

Choose files to upload

Choose Files

- Email me a copy of this report

Submit

Salt Lake
Community
College

The logo for Salt Lake Community College, featuring a stylized white rose or flower design to the right of the text.

AA/EO INSTITUTION REV. 09.10.2024